

Discover Lowlines

WEEKEND

Great Friends | Great Cattle | Great Fun!



Friday and Saturday,
June 5-6, 2015

On the ranch, Bismarck, ND



Effertz EZ Ranch Discover Lowline Weekend

Welcome to our 9th Annual Discover Lowlines Weekend!

This has been a dynamic year in the American beef cattle industry with record prices and beef becoming one of the most profitable commodities in agriculture. It has also a banner year for increased awareness of the contribution that Lowline genetics can have to real world commercial beef production.

Sales have been good with more volume buyers than in past years. This is a good indicator that the real beef industry is starting to hear and respect what we have been saying about Lowlines for years. Namely, that they do have a place in commercial beef production and that Lowlines can in fact help commercial producers lower their costs of production, lower the stress and labor during calving season and increase beef production on a pounds of beef per acre basis.

We are seeing unprecedented inquiry about Lowlines. A number of you are new to the breed. If we can help answer any questions about the breed or getting started please let us know. We welcome you here to our ranch in Bismarck. If there is anything we can do to assist you in any way please ask.

It is always a challenge to decide to let go of some of these very top producing cows and heifers out of our best cow families. But each year we try to offer in this sale cattle that we would want to buy if we were getting started in Lowlines or adding to a quality existing program. With that in mind, we are offering some terrific young fullblood females several bred to our Boxcar bull that has continued to impress us with good looking calves while he stays in terrific condition under heavy natural service. To compliment these outstanding fullblood females we have added a number of top notch percentage Moderator females with a wide variety of percentages, colors and styles. Several of these females will have calves at side sired by our best new bulls. The Sundance calves are truly impressive and we are very happy with our Luke calves, especially on our first calf heifers. As always we will offer breeding privileges with two straws of semen and a certificate for each of the females selling to our extensive battery of available herd sires both fullblood and percentage.

We have a very nice assortment of breeding age herd bulls in a variety of percentages to suit your needs. These bulls will be semen tested and health tested to go anywhere in the United States. If we can help you with your transportation needs just let us know.

This is our 9th annual sale and once again we will have a Lowline Breeders Seminar on Friday afternoon which is always educational and entertaining. This year will present

Dr. Lauren Hanna, NDSU Animal Geneticist, her thoughts on a new project combining work with Dr. Kris Ringwall at the NDSU Dickinson Research Center using DNA Genomics to identify cattle that will influence beef cow herd efficiency. The title of the project is: "Impact of frame size, efficiency, and longevity in the commercial beef cow herd."

Back by popular demand are "The Effertz Girls" and their presentation on preparing Lowline beef. We know you will enjoy that one especially when you get to taste the result of their work. Plan to stay for supper.

Once again thanks for your interest. Please come to the ranch and don't hesitate to ask us if we can help in any way.

All the best,
Neil and Jan Effertz and Family



**Neil & Jan Effertz
& Family**

17350 Hwy 1804 N.
Bismarck, ND 58503
701-223-5202
701-471-0153 Cell

www.loala.com
effertz@bektel.com



The whole family at the end of sale day 2014
What would we do without all the good help and support?



LOWLINE Sale Information



Saturday, June 6, 2015 • 1 p.m.

On the ranch, Bismarck, ND

Sale Day Phones: 701-223-5202 • 701-471-0153 • 701-471-0152

OFFERING 64 LOTS OF LOWLINE CATTLE:

Fullblood and Percentage Females
Show Prospects, Bulls and Embryos

BREEDING PRIVILEGES:

For each EZ female lot purchased, the buyer will be entitled to two straws of semen from an Effertz EZ Ranch herd bull for use on that female. The certificate to register one calf out of the female purchased at the sale will be provided to the buyer at no additional cost. For more details, refer to Page 20.

DIRECTIONS TO THE RANCH:

Effertz EZ Ranch is about 16 miles north of Bismarck, ND on Highway 1804. From Bismarck, take Highway 83 north for 4 miles to the junction of Highway 1804. Stay on Highway 1804 for 12 miles as you go west then north along the Missouri River. The ranch is on the west side of the road between mile markers 95 and 96.

VIDEO AND ONLINE UPDATES:

We will have video of most of the sale cattle on our website www.loala.com. We will also update the online supplement sheet with calving and breeding dates, and new photos. Check the website often for new information.

AREA MOTELS:

Rooms are being held at these convenient area motels:

Kelly Inn

1800 N 12th St. • Bismarck ND
701-223-8001

Americinn Lodge and Suites

3235 State St. • Bismarck ND
701-250-1000

Rooms are still difficult to find in Bismarck so we recommend early reservations. Let us know if you are having trouble finding a room.

SPECIAL REPRESENTATIVES:

KRIS PETERSEN, CATTLE BUSINESS WEEKLY
701-339-0305 CELL

DEAN PIKE, AMERICAN LOWLINE REGISTRY
303-810-7605 CELL

If you are unable to attend the sale and would like to discuss the sale cattle, we urge you to call Dean Pike. He is an experienced cattleman and field representative and a valuable resource for Lowline breeders. He will discuss the sale cattle with you and help you with your selections. You are also welcome to call Kris Petersen or Neil.

TRUCKING:

We will assist buyers in coordinating transportation.

ABSENTEE BUYERS:

Even if you intend to buy via liveauctions, we strongly recommend you call someone who is at the sale to discuss the cattle prior to the sale. Dean Pike or Kris Petersen will be happy to assist you as will anyone in our family. If you encounter problems during the sale with your internet feed, call us right away and we will help you bid. Feel free to call Abbey (701-471-1224) or Jan (701-471-0152) or call Neil's phone (701-471-0153).



HERD HEALTH:

Weaned open heifers and cows have all been calfhooed vaccinated for bangs. The open heifers have had our preweaning vaccination program of Virashield 6 plus Somnus and Ultrabac 7. Post calving, the cows have had Bovashield Gold FP5-VL5. All cattle have been poured with a generic ivermectin for insects. All calves have been vaccinated with moraxilla bovis for pinkeye.

INSURANCE:

Livestock insurance will be available at the settlement desk for those buyers wanting to insure their purchases. We ask any buyers who leave their purchases at the ranch more than a day or two to insure them.

9th Annual Discover Lowlines Schedule of Events

FRIDAY, JUNE 5

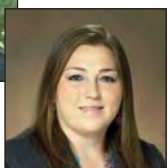
1:00 P.M. CATTLE READY FOR VIEWING

3:00 P.M. BREEDERS' SEMINAR

As we attend seminars and meet with leaders in the grass-fed beef industry, we have heard over and over that some of the best females to use in a grass-fed operation are percentage Lowline cows and our own experience confirms that. We hope you can join us for an afternoon of interesting topics of particular interest to Lowline breeders, addressed by engaging experts in their field. It's a great time to network with fellow breeders and then enjoy a Lowline beef supper. Please join us!



Dr. Kris Ringwall, NDSU Dickinson Research Extension Center Director, and **Dr. Lauren Hanna**, NDSU Animal Science Assistant Professor, have begun a new study that involves Lowline cattle, "Impact of frame size, efficiency and longevity on the commercial beef cow herd." Join us and hear them discuss the study.



Back by popular demand!

"The Effertz Girls" know that one of the best things about raising Lowlines is eating Lowline beef. Join Kate, Sarah and Abbey for cooking demonstrations, tasting grass-fed Lowline beef and recipes.



6:00 P.M. LOWLINE BEEF SUPPER & SOCIAL

SATURDAY, JUNE 6

10:00 A.M. PRE-SALE HOSPITALITY

Have a cup of coffee, look at the sale cattle and visit with fellow cattlemen.

11:30 A.M. LOWLINE BEEF LUNCH

1:00 P.M. 9TH ANNUAL DISCOVER LOWLINES SALE

Following the sale be sure to stay for ranch tours and supper. It's time to relax!



LOWLINE

Reference Sires



Bonanza's Boxcar 3Y



Boxcar in August 2013
after breeding
45 heifers.



A Bonanza's Boxcar 3Y

BD: 2/4/11 Tattoo: 3Y

Adrossan Neron

MCR Opinionated

MCR Blue Flag 53R

Kobblevale Chudleigh Y049

Bonanza LLC Starr

Binowee Starr S027

Fullblood Bull

Reg: FM15218

Black

Broken Arrow Nero
Ardrossan Delvene

EZ Railway 05N
EZ Tinkerbell 27L

Kobblevale Montague W019
Binnowee Crystal Q068

Binnowee Caesar M455
Trangie L115

Boxcar was an exceptionally impressive fullblood show bull that has grown into an even more impressive herd bull. He was the 2012 National Reserve Grand Champion Bull where he was a favorite of judge Jary Douglas who called him, "the most complete bull we've seen". He has matured into a beef machine whose calves are developing into some of our best replacement heifers. He is sound, athletic, virile and has been used extensively in natural service conditions over large numbers of fullblood and percentage Lowline females and maintained tremendous body condition score. We've used him on fullblood and percentage Lowline heifers for 2 years and have yet to assist a birth. His cattle are sound, balanced and well muscled.

B EZ Luke 24Z

BD: 6/4/12 Tattoo: EZ24Z

EZ Lisbon 29L

EZ Western 40W

EZ Twinkle 16T

Murrumbong LGL Bluey

Bar J Brook 9W2

SC Brook 118M 102H

Fullblood Bull

Reg: FM21936

Black/Red Gene Carrier

Brackengrae Beau Lad
EZ Olivia 15G

ALM Dakota Pride 60J
Mugga Lee 9L
Goan Wandoo II
Goan Black Opal

Bell Brae Boris
ALM Bess 102H



EZ Luke 24Z

Luke is an easy calving fullblood bull that carries the red gene. We have used him extensively on our first calf heifers, both fullblood and percentage. His first calves look great and we expect them to have the same deep bodied, easy fleshing and stout muscling we see out of the EZ Western breeding. His dam traces to ALM Bess 102H, a real big bodied fullblood "beef" cow. His structural soundness and mobility make us think these cattle will have tremendous longevity.

C EZ Commando 51X

BD: 3/2/10 Tattoo: EZ51X

Commander K162

Commander Bligh N076

BR Felicity J167

Trangie F069

BR Amicable J152

Trangie F153

Fullblood Bull

Reg: FM12074

Black

Trangie H153
Trangie F259

Trangie F026
Trangie Y189

Trangie D045
Trangie D221

Trangie D203
Trangie X110



EZ Commando 51X

Commando has a power packed pedigree stacked with maternal genetics. The Commander K162 and Commander Bligh daughters are fantastic, heavy milking females. His dam, Bramble-tye Amicable J152 was one of the most beautifully uddered females I saw in Australia. His first calves are extremely attractive and will no doubt make great cows.



LOWLINE Reference Sires



EZ Sundance 10Y



Sundance son



D EZ Sundance 10Y

BD: 3/2/11 Tattoo: EZ10Y

Nevada N060

Brambletye Utah

Brambletye Bronwyn II M051

Point Taken

Lady

Angu Cow 1

Halfblood Bull

Reg: MM20136

Black/Red Gene Carrier

Brambletye BBBosun L006
Glen Innes J389

Commodore J001
Brambletye Bronwyn J308
Heet Seeker
Meyer 734 Daughter

Traveler 6807
Angus

This is our first calf crop out of this very long bodied, stout made Utah son, and I can say that they are truly impressive! The Sundance calves are consistent across halfblood cows and heifers as well as very good out of 3/4 and 7/8 cows. They are long, deep, clean fronted and attractive in all cases. We are excited for some more half on half Sundance calves next spring. He carries the red gene and should sire some exceptional show calves.

E Baron's Red Lad 1Y

BD: 1/9/11 Tattoo: 1Y

Vitulus Y-R

Vitulus Red Baron

Goan Black Opal 5

Pepper

Lilly Pad Red Angu

Echo Lily 6508

Halfblood Bull

Reg: XM14872

Red

Goan Macquarie II
Goan Jewel Lady V056

Goan Kurrajong P004
Goan Black Opal
BUF Crk Romeo
BZ Nora 62N

Lorensen Vacation 4271
Santiam's Girl E05



Baron's Red Lad 1Y

Red Lad is one of the strongest topped, longest sided halfblood Lowline bulls we have every had on the ranch. He stamps his calves with that same great look. He has grown into a very well muscled herdsire with tremendous scrotal development. We expect his sons to be great breeding bulls and his heifers to be exceptionally fertile. Remember, reproductive efficiency is the number one economic trait!

F Marco 9W

BD: 12/30/08 Tattoo: 9W

Goan Wandoo II

LGL Murrumbong Bluey

Goan Black Opal

Bar J Ponderosa OK13

Bar J Miracle 7G9 2M42

Bar J Miracle 7G9

Fullblood Bull

Reg: FM9163

Black/Red Gene Carrier

Glen Innes N249
Goan Wattle III

Trangie M377
Trangie L109
Nevada N060
Bar J Nellie 7G1

Snotty
BR Geraldine II N071



Marco 9W



Here is an exciting red gene carrier fullblood bull. This level-hipped son of Bluey has the ideal phenotype to optimize forage-based feed production, sought-after show calves and is siring above-average growth rate in his calves. His dam is the mother of the 2008 National Champion Female and Reserve National Champion Females. His calves look great.



LOWLINE *Fullblood Females*



1 *EZ Mary Mary 45A*

Open Fullblood Heifer

Reg: FF21707

BD: 10/1/13

Tattoo: EZ45A

Black

MCR Opinionated

Ardrossan Neron
MCR Blue Flag 53R

Bonanza's Prince 2Y

ALM Suzie 050K

Commander II M045
Iten's Jamie 13G
Nevada N060
Trangie L004

ALM Dakota Pride 60J

EZ Twinkle Toes 15P

Miss Panmure L361

Broken Arrow Panmure
Mistletoe III

Mary Mary is not contrary and certainly far from ordinary! This sweet-natured Prince daughter has the power and the look you'd expect from the daughter of the American Royal Grand Champion and a big, deep-bodied Dakota Pride daughter. She's darn sure good enough to show and compete on a real fast track and when that's done, good enough to flush. We are retaining the right to one successful flush (4 embryos) at the buyer's convenience and our expense.



Lot 1

2 *EZ Quadrille 1B*

Open Fullblood Heifer

Reg: FF24110

BD: 3/30/14

Tattoo: EZ1B

Black

MCR Opinionated

Ardrossan Neron
MCR Blue Flag 53R

Bonanza's Boxcar 3Y

Bonanza LLC Starr

Kobblevale Chudleigh
Binnowee Starr
Monte Allegro Artusi
Elandra Park Angel

Spring Creek Tonka T14

Bonanza's Quadrille 7Y

Bonanza LLC Quadrille D808

Colombo Park Xerxes
Mugga Quadrille

This beautiful Boxcar fullblood has a truly unique pedigree. Her dam traces to one of only five Colombo Park Xerxes daughters in America who is out of the Mugga Quadrille cow family. She's feminine, clean-fronted, straight-topped and correct.



Lot 2

3 *EZ Biskit 44B*

Open Fullblood Heifer

Reg: Pending

BD: 11/12/14

Tattoo: EZ44B

Black

MCR Opinionated

Ardrossan Neron
MCR Blue Flag 53R

Bonanza's Boxcar 3Y

Bonanza LLC Starr

Kobblevale Chudleigh
Binnowee Starr
Brackengrae Beau Lad
Brambletye W332

CJN Conquistador 721

CJN Meadowlark 121

CJN Billie Gee

LTL Dillon
TNT Victoria 002M

What a cute little "Biskit" this November calf by Boxcar is. Her dam is a dandy double-bred Beau Lad granddaughter whose dam was sired by the National Champion LTL Dillon. She's just weaned and ready to go – and she's a real sweetheart.



We taught Abbey's fiance Matt all about cattle shows in Denver this year – thanks for your great help!!



LOWLINE

Fullblood Females



4 Lazy G Tori 4X18

BD: 4/16/10 Tattoo: 4X18

Bred Fullblood Cow

Reg: FF12184

Black

Beau Aaron M390

Glen Innes M343

Trangie E088

Glen Innes F403

Trangie M465

The Glebe Holly Q017

Trangie K080

Trangie J233

Brackengrae Beau Lad

Lazy G Beau

Brambletye Agnes J306

The Glebe Curly Jen

Top of the Range Tina

Trangie M476

You've seen in the two preceding lots what a great job Boxcar is doing. This young cow by Lazy G Beau (full brother to Low Beau) is due shortly after the sale for a calf by Boxcar. It could be great one! Her last year's heifer is one of our top replacements and her bull calf from the year before sold to Doug Wright in Oklahoma for \$4,000 ... one of the top bulls in that calf crop. You can't go wrong here.



Lot 4

5 DVL Mitzie 54RY

BD: 2/28/11 Tattoo: DVL54RY Black

Bred Fullblood Cow

Reg: FF17749

Ardrossan Richmond

Ardrossan Carla

Wanamara Vander-Kuyp

Kimbolton Cosmos

Union Pacific U280

EZ Miss Molly Brown 66J

Admiral J222

Brambletye Sunshine Too M442

Ardrossan Findon

Wanamara Findon Royale

Kimbolton Daphne

EZ Houdini 22N

EZ Tawny 77T

Brambletye Savana S211



EZ Houdini 22N, maternal grandsire to Lot 5



Brambletye Savana S211, maternal granddam to Lot 5

Why am I selling this good young Findon Royale daughter? Good question. The only reason I can let her go is she raised a heifer calf last year that is about as good as they get and we are keeping her to replace her dam. The cow family behind this hard-working 4-year-old is outstanding. Molly Brown and Savana are among the best-looking fullbloods we've every had on the ranch. More good news - she's due shortly after the sale to Boxcar.

6 EZ Patry Mae 12X

BD: 4/5/10 Tattoo: EZ12X Black

Bred Fullblood Cow

Reg: FF11484

Midshipman M206

Mugga Marnie L290

Rousebout

Glenfiddich Amy Q003

Kaptain Midnight

Trangie K004

Commander II M045

Brambletye Perfection II H002

EZ Magnum 72J

EZ Pete 14P

ALM Tayla 38J

Broken Arrow Panmure

Miss Panmure L357

Brambletye Perfection IV Q112



EZ Pete 14P, sire of Lot 6

Patsy Mae is our National Champion EZ Maggie 33P's 3/4 sister. Her sire's dam just calved at 16 years of age and is doing a great job of raising her calf. She has a beautiful sound udder at that age, a real testimony to her longevity. She's bred to Boxcar and could be carrying the next great one.

7 Bonanza's Tonya 4Y

BD: 3/7/11 Tattoo: 4Y

Bred Fullblood Cow

Reg: FF15214

Black

Broken Arrow Nero

Ardrossan Delvene

EZ Railway 05N

EZ Tinkerbelle 27L

Midshipman M206

Brambletye Felicity J167

Messmate P012

Mugga Esther E361

Ardrossan Neron

MCR Opinionated

MCR Blue Flag

Quartermaster Q1117

TNT Black Pearl

EZ Olivia 15G

Bonanza's Tonya is a very attractive young cow who unfortunately lost her newborn heifer calf last year in a blizzard. Her dam, the Black Pearl cow, is out of Lisbon's dam and is a full sister to Rick Lloyd's Black Master bull. She's bred for an early calf by Boxcar.

8 Bonanza's Quadrille 7Y

BD: 4/5/11 Tattoo: DLW7Y

Bred Fullblood Cow

Reg: FF15215

Black

Monte Allegro Artusi

Spring Creek Tonka

Elandra Park Angel

Colombo Park Xerxes

Bonanza LLC Quadrille D808

Mugga Quadrille Q046

Appertarra Randy R005

Ardrossan Dana

Bosun's Mate N066

Elandra Park Sarah

Colombo Park Tannhauser

Mugga Sabrina

Mugga Majura

Mugga New Moon

Lot 8A: Fullblood bull calf #12C born 4/29/15 sired by Boxcar 3Y, BW: 40#. Here's the dam of the Lot 2 heifer who is out of one of only five Xerxes daughters in America. She has a strong Mugga cow family on her bottom side. She sells with a real nice Boxcar bull calf.



LOWLINE

Fullblood Females



9 JCC Miss Razberry 02Y

Fullblood BC Pair

Reg: FF14330

BD: 4/27/11

Tattoo: JCC02Y

Black

Kintyre Dundee

Rouseabout
Trangie J303

BCC Doc Holiday 04P

Kintyre Melrose Abbey

Brambletye Bosun II
Trangie K238

Bay Ladd

Brackengrae Beau Lad
Brambletye Q124

LLB Ace of Queenie S58

Queenie

Admiral J222
Brambletye Bronwyn II M051



Lot 9A: Fullblood bull calf #45B born 11/23/14 sired by Boxcar 3Y. The old Queenie cow family has produced some excellent cattle for Dennis Boldt and others. She traces back to the great Brownwyn II M051 cow that is the dam of Utah and several other very good herd sires. With the stoutness of the Doc Holiday breeding on her top side, Miss Razberry is a cinch to be a top producer.

10 EZ Magnolia 9Z

Bred Fullblood Cow

Reg: FF17677

BD: 4/16/12

Tattoo: EZ9Z

Black

Midshipman M206

Kaptain Planet
Trangie C124

EZ Magnum 72J

Mugga Marnie L290

Trangie J260
Trangie C192
Trangie Saltbush K208
Trangie K064

Rouseabout

ALM Tayla 38J

Glenfiddich Amy Q003

Commodore III M046
Trangie L296



Lot 10 as a calf

Magnolia is a full sister to EZ Pete 14P. Her dam, the 16-year-old Rouseabout daughter, is still producing. Rouseabout has produced such greats as SCR Dominator, Cryptonite, Beaumont Matilda and Zeus, the herd bull for Big Island in Alberta that sired Alta Wild Card. Lots of power in the blood. She is bred to Boxcar.

11 EZ Moxie 32Z

Fullblood HC Pair

Reg: FF22616

BD: 9/1/12

Tattoo: EZ32Z

Black

EZ Lisbon 29L

Brackengrae Beau Lad
EZ Olivia 15G

EZ Western 40W

EZ Twinkle 16T

ALM Dakota Pride 60J
Mugga Lee 9L

LLB Baytwos S26

Bay Ladd
Princess

B & D Nellie X20

LLB Mac Nellie U731

Mac
Bar J Nellie 0K5-5R7



Lot 11 and her minutes-old heifer calf

Lot 11A: Fullblood heifer calf #19C born 5/9/15 sired by Boxcar 3Y, BW: 45#. Here's a real sweetheart of a young fullblood with a beautiful udder, small teat size and doing a great job with her newborn Boxcar heifer calf. Her dam is in the Ross Pfeifer herd in Comfort, TX.

12 EZ Haddie A7A

Bred Fullblood Heifer

Reg: FF25252

BD: 4/6/13

Tattoo: EZA7A

Black

Avonsleigh Julius

Caurarina Samson
Causarina Brooke

GTL Unique U02

Ardrossan Delvene

Minikin Quintus
Glen Innes E367

EZ Houdini 22N

Union Pacific U280
EZ Miss Molly Brown 66J

EZ Haddie 14T

Brownwyn 80H

Admiral J222
Brambletye Bronwyn II M051

Here's a nice-made, feminine Unique daughter out of the EZ Haddie 14T cow by the great Houdini. Her dam traces to the dam of Utah on the bottom side. This should make for a great Boxcar calf.

13 EZ Silhouette A19A

Bred Fullblood Heifer

Reg: FF25254

BD: 4/12/13

Tattoo: EZA19A

Black

Avonsleigh Julius

Caurarina Samson
Causarina Brooke

GTL Unique U02

Ardrossan Delvene

Minikin Quintus
Glen Innes E367

Athanlee Herman R007

Mugga Majura
Trangie J325

EZ Silhouette 44X

Brambletye Perfection II H002

Trangie E004
Brambletye Perfection F183

The Perfection H002 cow family has produced several champions on the national scene. This Silhouette female by Unique is built right and should have a great Boxcar calf next fall. Her full sister sells as Lot 17.



LOWLINE

Fullblood Females



14 EZ Ariel A34A

Bred Fullblood Heifer

Reg: FF25255

BD: 4/20/13 Tattoo: EZA34A Black

Avonsleigh Julius

Caurarina Samson
Causarina Brooke

GTL Unique U02

Ardrossan Delvene

Minikin Quintus
Glen Innes E367
Kintyre Dundee
Kintyre Melrose Abbey

BCC Doc Holiday 04P

KBW Ariel

Double J's Miss 28T

Colombo Park Zeffirelli
Miss Jets Brenton 268K

Here's a big, stout-made Unique daughter out of an own daughter of Doc Holiday who traces to Zeffirelli and Eliza Park Brenton. Some folks are looking for bigger-than-average Lowline fullbloods with all the desirable easy-fleshing, well-muscled traits ... here she is. She is pasture exposed to Boxcar.



GTL Unique, sire of Lots 14, 16 and 17

15 EZ Veracity A44A

Bred Fullblood Heifer

Reg: FF25256

BD: 4/28/13 Tattoo: EZA44A Black

Bar J Sparks 4P16

Bar J Ponderosa 0K13
Bar J Tina 8H3-0K48

EZ Torch 23T

Brambletye St. Louise S208

Admiral J222
Brambletye Agness II M044
Colombo Park Tannhauser
Monte Allegro Zelma

Yarra Ranges Jackaroo

EZ Veracity 265X

ALM Fidelity 65J

Brambletye Arunta L013
Mugga Fidelity F338

What a powerful pedigree packed in a powerful heifer. She's deep and thick and big bodied and loaded with great ancestors top to bottom. She should have an awesome Boxcar calf. Her dam has a full sister in the W Diamond herd in New Mexico.



EZ Torch 23T, sire of Lot 15

16 EZ Sydney A56A

Bred Fullblood Heifer

Reg: FF25258

BD: 5/28/13 Tattoo: EZA56A Black

Avonsleigh Julius

Caurarina Samson
Causarina Brooke

GTL Unique U02

Ardrossan Delvene

Minikin Quintus
Glen Innes E367
Brackengrae Beau Lad
EZ Olivia 15G

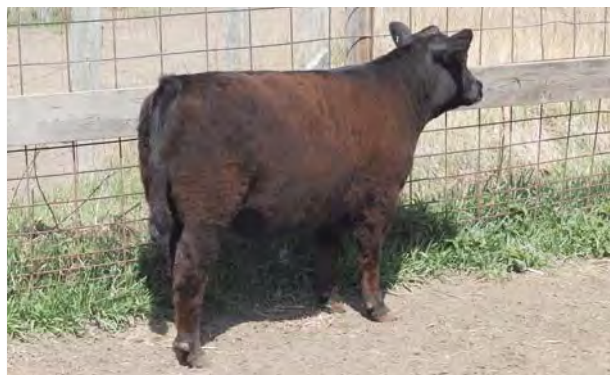
EZ Lisbon 29L

KBW Sydney 10W

ALM Grace 123H

Admiral II L035
Brambletye Geraldine II N071

Sydney is a clean-fronted, feminine, late-May heifer bred to Boxcar for a fall calf. Her dam by Lisbon should be loaded with great carcass traits.



Lot 18

17 EZ Sillhouette B12B

Open Fullblood Heifer

Reg: FF25246

BD: 5/3/14 Tattoo: EZB12B Black

Avonsleigh Julius

Caurarina Samson
Causarina Brooke

GTL Unique U02

Ardrossan Delvene

Minikin Quintus
Glen Innes E367
Mugga Majura
Trangie J325

Athanlee Herman R007

EZ Sillhouette 44X

Brambletye Perfection II H002

Trangie E004
Brambletye Perfection F183

Here's a fancy young May heifer calf out of the Perfection H002 cow family that has produced so many great ones. Her full sister sells as Lot 13.

18 EZ Perfection B10B

Open Fullblood Heifer

Reg: FF25245

BD: 4/29/14 Tattoo: EZB10B Black

Columbo Park Zeffirelli

Appertarra Randy R005
Colombo Park Violetta

Ausmerican Wurrung W006

Ardrossan Nardia

Minikin Quintus
Ardrossan Carla
Mugga Majura
Trangie J325

Athanlee Herman R007

EZ Perfection 43X

Brambletye Rising Sun R153

Brambletye The Bloke
Brambletye Perfection II H002

EZ Perfection B10B is a great-made, clean-fronted, fullblood outcross Wurrung daughter out of the great Brambletye Perfection H002 daughter. She's stout made yet very feminine! She has a full sister in blood in the Pug Perkins herd in Hines, Oregon.



LOWLINE

Fullblood Females



19 EZ Michaela B15B

BD: 5/5/14

Tattoo: EZB15B

Black

Open Fullblood Heifer

Reg: FF25247

Athanlee Herman R007

Mugga Majura
Trangie J325

EZ Perfecto 48X

Brambletye Rising Sun R153

Brambletye The Bloke
Brambletye Perfection II H002
Brambletye Bosun L006
Glen Innes J389

Nevada N060

MS Michaela 025K

OAK Midnight 79H

Admiral J222
Brambletye Olive II M053

She is a beautiful Perfecto 48X daughter out of the Michaela 025K cow that goes back to the Brambletye Olive M053 cow that is the dam of two great Denver champions.



Neil and Jan got to watch the NDSU Bison win their 4th National Championship in January... the Efftz family was well represented!

20 EZ Rising Sun B17B

BD: 5/5/14

Tattoo: EZB17B

Black

Open Fullblood Heifer

Reg: FF25248

Columbo Park Zeffirelli

Appertarra Randy R005
Colombo Park Violetta

Ausmerican Wurrung W006

Ardrossan Nardia

Minikin Quintus
Ardrossan Carla
Mugga Majura
Trangie J325

Athanlee Herman R007

EZ Rising Sun 42X

Brambletye Rising Sun R153

Brambletye The Bloke
Brambletye Perfection II H002

She's a full sister in blood to Lot 18. Rising Sun was an Australian Champion female and her dam produced several American champions.



EZ Rising Sun 42X, dam of Lot 20, as a calf

21 EZ Sunshine B23B

BD: 5/20/14

Tattoo: EZB23B

Black

Open Fullblood Heifer

Reg: FF25250

Columbo Park Zeffirelli

Appertarra Randy R005
Colombo Park Violetta

Ausmerican Wurrung W006

Ardrossan Nardia

Minikin Quintus
Ardrossan Carla
Commander K162
Brambletye Felicity J167

Commander Bligh N076

EZ Sunshine 46X

Brambletye Red Sky R177

Admiral Fitzroy
Brambletye Sunshine Too M442

This fancy late-May heifer calf by Wurrung has a dam that was an exceptional looking heifer when she was a calf. Her granddam is out of the number one cow in the Australian herd book.



EZ Sunshine 46X, dam of Lot 21 as a calf

22 EZ Ariel B25B

BD: 5/28/14

Tattoo: EZB25B

Black

Open Fullblood Heifer

Reg: FF25251

Athanlee Herman R007

Mugga Majura
Trangie J325

EZ Perfecto 48X

Brambletye Rising Sun R153

Brambletye The Bloke
Brambletye Perfection II H002
Kintyre Dundee
Kintyre Melrose Abbey

BCC Doc Holiday 04P

KBW Ariel

Double J's Miss 28T

Colombo Park Zeffirelli
Miss Jets Brenton 268K

EZ Ariel B25B is a level-topped, big-rumped, deep-ribbed beef cow in the making! Her sire, EZ Perfecto 48X, an own son of Athanlee Herman, is co-owned with Irwin Taplin from Wisconsin. She's powerful. Her half sister sells as Lot 14.



Lot 22



LOWLINE Percentage Females



23 EZ Molly 154B

BD: 5/20/14 Tattoo: EZ154B

Open Halfblood Heifer

Reg: MF25730

Black

Bojo

Cowan's Ali
Buttercup

MRG Mojo 17Y

SC Victoria S11 12J

ALM Wrangler 44H

ALM Dot 12J

EZ Sherman 24J

Brambletye Arunta L013

EZ Miss Sherman 174P

Angus

Mugga Fidelity F338



Lot 23

EZ Molly 154B (THF) is an elegant-fronted, strong-topped, clean-made daughter of the National Champion Mojo. She's daughter of a fabulous halfblood cow that we have had in our herd since 2004. She's super stylish to make a great show heifer but don't overlook the cow power behind her. She's the first Mojo daughter we've ever sold.

24 EZ Miss Sherman 174P

BD: 4/9/04 Tattoo: EZ174P

Halfblood HC Pair

Reg: XF5278

Black

Brambletye Arunta L013

Trangie J038

Trangie J117

EZ Sherman 24J

Mugga Fidelity F338

Trangie C203

Trangie C094



We sure do like the Sundance calves!

Angus

Lot 24A: Halfblood heifer calf #104C sired by Sundance born 4/1/15, BW: 54# This tremendous-producing Sherman daughter is so sound both structurally and in udder conformation. She's got a fantastic April heifer calf by Sundance. She's also the dam of Lot 23. Put all three of these females together if you want to build a great herd!

25 EZ Reba 332B

BD: 5/10/14 Tattoo: EZ332B

Open 3/4 Heifer

Reg: MF25739

Red

Murrumbong LGL Bluey

Goan Wandoo II

Goan Black Opal

"Rudy" Lazy G Red by Design

Goan Black Opal

Trangie M377

Trangie L109

SC Gus S10 102H

Buzz

ALM Bess 102H

EZ Reba 135X

200R Laila Ali

Cowan's Ali (Simmental)



Lot 25

This Reba daughter by Rudy is a red 3/4 blood that's really, really good. Her dam is co-owned with Greg Ossian. Lots of quality here. Her dam sells as Lot 26.

26 EZ Reba 135X

BD: 6/8/10 Tattoo: EZ135X

Bred Halfblood Cow

Reg: XF12650

Red

Buzz

Rawhide

Brambletye Perfection II H002

SC Gus S10 102H

ALM Bess 102H

Admiral J222

Brambletye Tara J534

Cowan's Ali

Laila Ali 200R Maine X Simm

Simmental



Lot 26

Here's Reba! She's a big, powerfully well-muscled yet feminine red halfblood out of the Grand Champion Maine Anjou heifer at the Minnesota Beef Expo. Cowan's Ali, the sire of her dam, is one of the most popular, easy-calving Maine Anjou bulls in that breed. Her daughter sells as Lot 25. She is due for a red halfblood heifer calf in early June sired by Red Lad 1Y.



LOWLINE Percentage Females



27 EZ Polly 102P

BD: 3/21/04

Tattoo: EZ102P

BWF

Halfblood BC Pair

Reg: XF8513

Nevada N060

ALM Dakota Pride 60J

Trangie L004

Brambletye Boson L006

Glen Innes J389

Trangie J078

Binowee Ruth



Lot 27 and 27A

7150 Commercial Cow

Lot 27A: Red white-faced halfblood bull calf #136C born 5/3/15, sired by Sundance, BW: 68#. Here's a chrome-laden package for you. This black, blaze-faced Simmental-based halfblood has a great red blaze-faced halfblood bull calf by Sundance. He's stout, thick and colorful! Her daughter sells as Lot 40.

28 EZ Bella 329B

BD: 4/20/14

Tattoo: EZ329B

Black

Open 3/4 Heifer

Reg: MF25738

Bar J Sparks 4P16

EZ Buster 303U

EZ Miss Bosun's Mate 926J

EZ Houdini 22N

EZ Stella 394S

RLL Allyson 4005P

Bar J Ponderosa 0K13

Bar J Tina 8H3-0K48

Bosun's Mate N066

Angus

Union Pacific U280

EZ Miss Molly Brown 66J

Black Master 01J

Black Maine X Angus

This nice-made double 3/4 blood (3/4 bull bred to a 3/4 cow) prospect is out of a great cow family by a great sire. She goes back to a Maine X Angus base. Her dam sells as Lot 29.



Lot 27A

29 EZ Stella 394S

BD: 6/3/06

Tattoo: EZ394S

Black

3/4 Cow & 5/8 BC

Reg: XF8522

Union Pacific

EZ Houdini 22N

EZ Molly Brown 66J

Black Master 01J

RLL Allyson 4005P

Black Maine X Angus

Athanlee Herman

Brambletye Tara IV Q111

Commander Bligh N076

Brambletye Q131

Quartermaster Q117

EZ Olivia 15G



Lot 29

Lot 29A: 5/8 bull calf #505C by EZ Sherwood 148Z MM22206 (halfblood by Bar J Sultan) BW: 62#. Stella's dam was a National Show contender in the Lowline female show in Denver in 2005 for Rick Lloyd. She's a Houdini daughter out of a Black Master daughter that really has a lot of great cows in her pedigree. She sells with an exciting young bull calf by Sherwood. Her daughter sells as Lot 28.

30 EZ Bitzy 142B

BD: 5/3/14

Tattoo: EZ142B

Black

Open Halfblood Heifer

Reg: MF25729

Bar J Sparks 4P16

EZ Buster 303U

EZ Miss Bosun's Mate 925J

Winchester Square Meater

EZ Winnie 114P

EZ Miss Quartermaster 142K

Bar J Ponderosa 0K13

Bar J Tina 8H3-0K48

Bosun's Mate N066

Angus

Quartermaster Q117

EZ Miss Peugeot 50H Charolais



EZ Winnie the Red 127A, maternal sister to Lot 30

Here's another Buster daughter, a paternal sister to Lot 28. Her maternal sister Winnie the Red 127A sold for \$3,000 to Shea Esser last year. Her dam, a great-producing Winchester (Square Meater) daughter has two daughters in our herd.



LOWLINE Percentage Females



31 EZ Candy 306B

BD: 4/9/14 Tattoo: EZ306B

Black

Commander Bligh N076

Commander K162
Brambletye Felicity J167

EZ Commando 51X

Brambletye Amicable J152

Trangie F069
Trangie F153
Brackengrae Beau Lad
EZ Olivia 15G

EZ Lisbon 29L

EZ Laura 115X

S32 Salers X Angus

Open 3/4 Heifer

Reg: MF25733



Grandpa and Grandma's pride and joy!!

32 EZ Ultra 3112B

BD: 4/16/14 Tattoo: EZ3112B

Black

Nevada N060

Brambletye Bosun L006
Glen Innes J389

EZ Lexus 18L

Brambletye St. Louise S208

Admiral J222
Brambletye Agness II M044
Quartermaster Q117
EZ Olivia 15G

Black Master 01J

RLL Miss Ultra 3000

Simmental

Open 3/4 Heifer

Reg: MF25750



EZ Lexus 18L, sire of Lot 32

33 EZ Blackbird 315B

BD: 4/16/14 Tattoo: EZ315B

Black

Bar J Sparks 4P16

Bar J Ponderosa 0K13
Bar J Tina 8H3-0K48

EZ Buster 303U

EZ Miss Bosun's Mate 925J

Bosun's Mate N066
Angus
EZ Magnum 72J
ALM Tayla 38J

EZ Pete 14P

EZ Blackbird 316Z

SLA Blackbird Freda 417P

Brambletye Utah U319
Angus

Blackbird is a double 3/4 blood heifer, out of a great bull and one of the best cow families on the ranch. Her maternal granddam is the dam of EZ Riley 323W who sold to Amy Emberson, Nowata, OK, for \$4,000. Her dam, Blackbird 316X, is one of our top 3/4 blood cows. She's good looking, thick topped and will make a great cow.



EZ Buster 303U, sire of Lot 33

34 EZ Lady 168W

BD: Tattoo: EZ168W

Black

Brackengrae Beau Lad

Beau Aaron M390
Glen Innes M343

EZ Lisbon 29L

EZ Olivia 15G

Goan Messmate
Mugga Esther E361

Halfblood HC Pair

Reg: XF18465



Lot 34A

Angus

Lot 34A: Halfblood heifer calf #108C sired by Sundance born 4/7/15, BW: 72#. These Lisbon daughters just don't miss! Check out her sweetheart of a halfblood heifer calf by Sundance. She already looks like a great brood cow prospect and she's only a few weeks old. She'll be bigger than most halfbloods.



LOWLINE Percentage Females



35 EZ Queenie 109Z

BD: 4/14/12

Tattoo: EZ109Z

Black

Halfblood HC Pair

Reg: Pending

Midshipman M206

Kaptain Planet
Trangie C124

Quartermaster Q117

Brambletye Felicity J167

Trangie F026
Trangie Y169



Quartermaster Q117, sire of Lot 35

T154 Salers X Angus

Lot 35A: Halfblood heifer calf #114C sired by Sundance born 4/11/15, BW: 63#. This modest framed 3-year-old by the Australian National Champion Quartermaster is out of a Salers x Angus base and has a perfect udder and a fantastic Sundance heifer at her side. Her sister sells as Lot 39.

36 DLC Black Mamba

BD: 1/29/12

Tattoo: 20Z

Black

Halfblood BC Pair

Reg: XF16906

RML Touchdown

RML Top Gun RD24
BCR Diana

DLC Red Zone 12X

Red Angus

LB Zeke 57J

Midshipman M206

DLC Keyes Zayn 9X

Buelingo

Brambletye Freegirl J2023



Our friends, Buck and Alex, and their annual December pheasant hunting trip – cold and fun!

37 CRL Miss Chain A9

BD: 2/25/13

Tattoo: CRLA9

Black

1/2 Cow & 3/4 BC

Reg: MF20983

Bonanza's Brenton 02L

Eliza Park Brenton N001
Beaumont Matilda

Little Joe 305R

Bonanza's Sara 200M

Dakota
BHR Sara



Little Joe, 2006 National Champion and sire of Lot 37

Commercial Cow

Lot 37A: 3/4 bull calf #307C born 4/11/15 sired by Boxcar 3Y, BW: 56#. Here's a member of the National Western Stock Show Grand Champion Pen of Commercial Heifer Calves in 2014. She sells with a Boxcar bull calf at side that looks great. She was bred at the Chain Ranch in Oklahoma.

38 IJM Amelia A2

BD: 2/17/13

Tattoo: IJMA2

Black

Bred Halfblood Cow

Reg: MF19679

Bar J Sparks 4P16

Bar J Ponderosa 0K13
Bar J Tina 8H3-0K48

4R Spark Plug 04X

EZ Fantasia 20J

Brambletye Arunta L013
Mugga Fidelity F338

39 EZ Marigold A108

BD: 4/8/13

Tattoo: EZA108

Black

Bred Halfblood Cow

Reg: MF25773

Murrumbong LGL Bluey

Goan Wandoo II
Goan Black Opal

Marco 9W

Bar J Miracle 7G9 2M42

Bar J Ponderosa 0K13
Bar J Miracle 7G9

Angus

Look at the deep-sided, easy-fleshing Spark Plug daughter that's due for a heifer calf by Boxcar right about sale time – should be a dandy.

T154 Salers X Angus

Here's a long-sided 2-year-old first-calf heifer by Marco out of a Salers x Angus base. She could be carrying a red gene and she could have a red calf by Luke, due shortly after the sale. Her sister sells as Lot 35.



LOWLINE Percentage Females



40 EZ Sissy 513Z

BD: 5/10/12 Tattoo: EZ513Z

Black

ALM Dakota Pride 60J

EZ Sawyer 321S

Miss Dakota Classic 008J

ALM Dakota Pride 60J

EZ Polly 102P

7150 Commercial Cow

Bred 5/8 Cow

Reg: MF25771

Nevada N060
Trangie L004

Bosun's Mate N066
Angus

Nevada N060
Trangie L004

Simmental

41 EZ Prissy 187W

BD: 4/12/09 Tattoo: EZ187W

Black

Union Pacific

EZ Pacific Spur 14M

Brambletye Silver Spur S216

Bred Halfblood Cow

Reg: MF19084

Athanlee Herman

Brambletye Tara IV Q111

Admiral J222

Brambletye Sunshine Too M442

Angus

This 5/8 heifer by Sawyer is carrying the red gene (by DNA test) and she could be carrying a red calf that's due shortly after the sale by Sundance who also carries the red gene. Her dam sells as Lot 27.

Here's a Pacific Spur daughter that came from the Central Grasslands Research Center in Streeter, ND. She's due for a 3/4 heifer calf in early June sired by EZ Luke 24Z.

42 M14

BD: Tattoo:

BWF Cow & 1/2 HC

Reg: NA

BWF



Lot 42A

Lot 42A: Halfblood black white-faced heifer calf born 4/18/15 sired by Marco 9W, BW: 65#. This productive, black baldy cow always has an excellent calf and this year's black baldy heifer calf by Marco is no exception. She's pretty!

43 EZ Sky 314B

BD: 4/18/14 Tattoo: EZ314B

Black

MCR Opinionated

Bonanza's Boxcar 3Y

Bonanza LLC Starr

Lazy G Beau

Lazy G Sky 5Z30

Shorthorn X

Ardrossan Neron

MCR Blue Flag 53R

Kobblevale Chudleigh

Binnowie Starr

Brackengrae Beau Lad

Brambletye Agnes J306

Open 3/4 Heifer

Reg: MF25861



Whose having more fun? Grandpa and Anna love to fish.

Look at this nice-made, structurally correct 3/4 heifer out of a well-bred first-calf heifer that goes back to a Shorthorn base. Another nice Boxcar heifer.

44 EZ Boxy 322B

BD: 4/23/14 Tattoo: EZ322B

Black

MCR Opinionated

Bonanza's Boxcar 3Y

Bonanza LLC Starr

EZ Titan 7T

EZ Tillie 141Z

N5 Salers X Angus

Ardrossan Neron

MCR Blue Flag 53R

Kobblevale Chudleigh

Binnowie Starr

EZ Lisbon 29L

EZ Lady Luck 51N

Open 3/4 Heifer

Reg: MF25737

45 EZ Annabelle 333B

BD: 5/12/14 Tattoo: EZ333B

Black

Commander Bligh N076

EZ Commando 51X

Brambletye Amicable J152

Lazy G Johnnie Walker

EZ Joanie 130Z

T11R

Commander K162

Brambletye Felicity J167

Trangie F069

Trangie F153

Murrumbong LGL Bluey

SC Brook 118M 102H

Open 3/4 Heifer

Reg: MF25740

This Boxcar x Titan cross is really working. Her dam is out of a big-bodied, really good Salers x Angus cow now in the Cal Schaeffer herd. Put these Boxcar heifers together if you want some really efficient, long-lasting cows.

Stout. Club calf producers, check her out. She's got that big hair and big butt that will make you sing! You'll like these Commandos and even better yet when they are out of a Johnnie Walker daughter. She's nice!



LOWLINE Percentage Females



46 EZ Allanna 151B
BD: 5/13/14 Tattoo: EZ151B

Open Halfblood Heifer

Reg: MF25742

BWF

Murrumbong LGL Bluey

Goan Wandoo II
Goan Black Opal

Marco 9W

Bar J Miracle 7G9 2M42

Bar J Ponderosa 0K13
Bar J Miracle 7G9



Lot 46

47 EZ Gracie 514B

BD: 5/17/14 Tattoo: EZ514B

Open 68% Heifer

Reg: MF25749

Black

Bar J Cowboy Up X52

BPF Mercedes Benz 131Z
Bar J Nell 2M26 6S86

Doll House Gunslinger 223Z

TCS She's A Honey 15X

Fairwyn's Low Beau
Ang X Shorthorn
Brenton's Best Bruiser
Millaroo Dharma

Black Bottom Bruiser R02

PT Bette

PX 17R

LB Wyatt 154L
PX 7M



Doll House Gunslinger 223Z, sire of Lots 47, 48, 49 and 50

48 EZ Annie 516B

BD: 6/7/14 Tattoo: EZ516B

Open 73% Heifer

Reg: MF25748

Black

Bar J Cowboy Up X52

BPF Mercedes Benz 131Z
Bar J Nell 2M26 6S86

Doll House Gunslinger 223Z

TCS She's A Honey 15X

Fairwyn's Low Beau
Ang X Shorthorn
Colombo Park Zeffirelli
Black Bottom Fay P02

PT Picasso XU

EAB 82Y

Wilda

Spud 182P
BHL Reba 17R



Gunslinger, 2012 Louisville Supreme Champion, sire of Lots 47 - 51.

49 EZ Greta 513B

BD: 5/30/14 Tattoo: EZ513B

Open 62.5% Heifer

Reg: MF25747

Black

Bar J Cowboy Up X52

BPF Mercedes Benz 131Z
Bar J Nell 2M26 6S86

Doll House Gunslinger 223Z

TCS She's A Honey 15X

Fairwyn's Low Beau
Ang X Shorthorn
Colombo Park Zeffirelli
Black Bottom Fay P02

PT Picasso XU

EAB 13Y

PT Eve WU

Black Bottom Bruiser
Unregistered Lowline Cow

Greta is one of four Gunslinger heifers. She's a late-May 5/8 out of another first-calf Picasso daughter. They are nice.

50 EZ Gizelle 161B

BD: 6/1/14 Tattoo: EZ161B

Open Quarterblood Heifer

Reg: MF25744

Black

Bar J Cowboy Up X52

BPF Mercedes Benz 131Z
Bar J Nell 2M26 6S86

Doll House Gunslinger 223Z

TCS She's A Honey 15X

Fairwyn's Low Beau
Ang X Shorthorn

S005

Yet another young Gunslinger heifer out of a non-registered Lowline cross cow so she can only be registered as a quarterblood even though there are more Lowline genetics in this heifer.



LOWLINE

Fullblood Bulls



51 EZ Jack - O 14A

BD: 4/11/13

Tattoo: EZ14A

Black

Colombo Park Tannhauser

Yarra Ranges Jackaroo

Monte Allegro Zelma

Goan Messmate P012

EZ Olivia 15G

Glen Innes E361

Fullblood Bull

Reg: FM25310

The Glebe Woodstock
Avonsleigh Jewell

Monte Allegro Da Vinci
Terbonne Victoria
Trangie Saltbush K205
Trangie E392

Trangie C163
Trangie Y030



Lot 51

EZ Jack-o 14A is a very correct, stylish Jackaroo son out of EZ Olivia 15G, the dam of Lisbon, Jaxson and Black Master and many other herd sires. Expect exceptional carcass traits with all kinds of milk and maternal strength behind him. His dam has generated thousands of dollars worth of progeny as well as great sons and daughters in our herd and countless other good herds across the country.

52 EZ A-Train 15A

BD: 4/15/13

Tattoo: EZ15A

Black

MCR Opinionated

Bonanza's Boxcar 3Y

Bonanza LLC Starr

EZ Magnum 72J

EZ Maggie 10Y

Miss Panmure L357

Fullblood Bull

Reg: FM24138

Ardrossan Neron
MCR Blue Flag 53R

Kobblevale Chudleigh
Binnowee Starr
Midshipman M206
Mugga Marnie L290

Broken Arrow Panmure
Brambletye Perfection IV Q112



Lot 52

We used A-Train on a few females this fall. He has a tremendous pedigree. His dam, a full sister to National Champion EZ Maggie 33P, had him as a first-calf heifer, one of our first Boxcar calves. He will throw some very nice calves!

53 EZ Parshall 23A

BD: 4/29/13

Tattoo: EZ23A

Black

MCR Opinionated

Bonanza's Prince 2Y

ALM Suzie 050K

Brackengrae Beau Lad

EZ Twinkle 2T

Brambletye W332

Fullblood Bull

Reg: FM25308

Ardrossan Neron
MCR Blue Flag 53R

Commander II M045
Iten's Jamie 13G
Beau Aaron M390
Glen Innes M343

Broken Arrow Panmure
Brambletye Q116



Lot 53

EZ Parshall 23A is an exciting, clean-fronted, fullblood son of a Beau Lad daughter of our W332 cow (the dam of Fancy Pants). He should have a ton of carcass genetics with great tenderness and marbling numbers. His sire, Prince, had the biggest ribeye area/cwt (1.88) in Denver as a yearling with a 695 lb. actual yearling weight and an 13.05 REA at 12 months of age. He's the real deal.

54 EZ Redwood 13B

BD: 4/12/14

Tattoo: EZ13B

Red

Bonanza's Brenton 02L

SC Gus S10 102H

ALM Bess 102H

Murrumbong LGL Bluey

EZ Crimson Marnie 64U

ALM Mid Mugga 05J

Fullblood Bull

Reg: FM22814

Rawhide R157
Brambletye Perfection II H002

Admiral J222
Brambletye Tara J534
Goan Wandoo II
Goan Black Opal

Midshipman M206
Mugga Petula 2nd P037



Lot 54

Redwood has been one of those standouts right from the start. He and his dam were Grand Champion Pair at the 2014 Iowa State Fair and American Royal. His dam has a perfect udder. He has total outcross genetics on his sire's side for the red Lowline breeders. He's really well built and would work extremely well and would work extremely well on big-framed red cows and heifers. Selling half interest and full possession. Co-owned with Hutch's Cattle Co.



LOWLINE *Bulls*



55 EZ Alaska 303A

3/4 Bull

Reg: MM25860

BD: 4/1/13

Tattoo: EZ303A

Black

ALM Dakota Pride 60J

Nevada N060
Trangie L004

EZ Sawyer 321S

Miss Dakota Classic 008J

Bosun's Mate N066
Angus

EZ Pete 14P

EZ Magnum 72J
ALM Tayla 38J

EZ Blackbird 316S

SLA Blackbird Freda 417P

Brambletye Utah
Angus



EZ Sawyer 321S, sire of Lot 55

Here's an awfully good 3/4 blood herdsire by our red gene carrier, EZ Sawyer 321S. His dam is from one of our very best cow families. He's thick and naturally well muscled on a forage-based diet and should breed true to his type as he is a double 3/4 blood with a pedigree loaded with our best bloodlines.

56 EZ Tioga 322A

3/4 Bull

Reg: MM25775

BD: 4/29/13

Tattoo: EZ322A

Black

EZ Lisbon 29L

Brackengrae Beau Lad
EZ Olivia 15G

EZ Titan 7T

EZ Lady Luck 51N

EZ Magnum 72J
Lucky 7

Brambletye Utah

Nevada N060
Brambletye Bronwyn II M051

SLA Blackbird Freda 417P

Angus



Lot 56

EZ Tioga 322A is a really complete 3/4 Titan son out of a great Utah daughter 417P. His dam has been an outstanding cow that produced a show heifer for Amy Emberson that went on to raise another show heifer now in the S and B Lowlines herd in Texas. He puts it all together!

57 EZ Bosco 103B

Halfblood Bull

Reg: Pending

BD: 4/9/14

Tattoo: EZ103B

Black

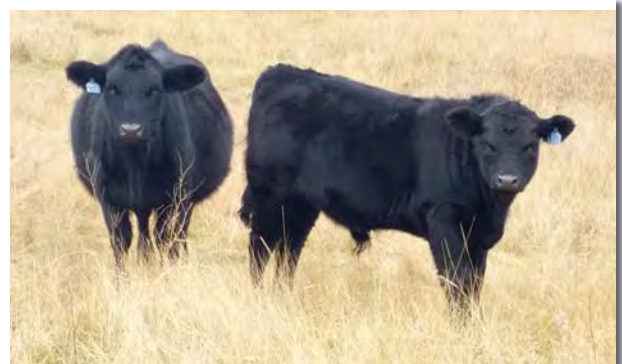
Murrumbong LGL Bluey

Goan Wandoo II
Goan Black Opal

Marco

Bar J Miracle 7G9 2M42

Bar J Ponderosa 0K13
Bar J Miracle 7G9



Look at this growthy halfblood Buster son, 105B, an April calf in October – efficient beef production!

X18 Red Ang X

He is a real good, high-performing yearling halfblood developed on a high-roughage ration. He could be carrying the red gene.



A beautiful picture...alive, unassisted, vigorous, 66# birthweight out of a fullblood Lowline bull.



LOWLINE *Bulls*



58 4Skors Budlite B12

3/4 Bull

Reg: MM23592

BD: 3/20/14

Tattoo: SKOB12

Black

Murrumbong LGL Bluey

Goan Wandoo II
Goan Black Opal

Lazy G Johnnie Walker

SC Brook 118M

Bell Brae Boris
ALM Bess 102H
Nevada N060
Brambletye Bronwyn II M051

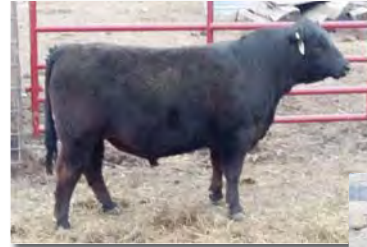
Brambletye Utah

Double L Abby Mal

JCG Ms Payback Pearl

JGCC Black Pearl
JCG Ms Rckn Payback 1 CM Chi Ang

He's a taller, longer framed 3/4 blood out of an own daughter of Utah, the sire of the Grand Champion Steer at the 2014 Junior National Show. Bull test stats: Wt: 680#, RF: .23, REA: 10.4, IMF: 2.86. Consigned by Cody Skor.



Lot 58



Lot 59

59 4Skors Bull B112

3/4 Bull

Reg: MM23608

BD: 4/14/14

Tattoo: SKOB112

Black

Murrumbong LGL Bluey

Goan Wandoo II
Goan Black Opal

Lazy G Johnnie Walker

SC Brook 118M

Bell Brae Boris
ALM Bess 102H
Brackengrae Beau Lad
ALM Vegas 01J

Champion Valley Nitro

EZ Nellie 112Z

Angus

This thick-ended, deep-quartered 3/4 Johnnie Walker son has a big ribeye and a 1.72 REA/CWT. He's a real meat wagon like his sire. Bull test stats: Wt: 685#, RF: .28, REA: 11.81, IMF: 2.44. Consigned by Cody Skor.



Lazy G Johnnie Walker, sire of Lots 58 and 59

60 EZ Alamo 49A

Fullblood Bull

Reg: FM25859

BD: 11/10/13

Tattoo: EZ49A

Black

Murrumbong LGL Bluey

Goan Wandoo II
Goan Black Opal

Marco 9W

Bar J Miracle 7G9 2M42

Bar J Ponderosa 0K13
Bar J Miracle 7G9
EZ Lisbon 29L
ALM Louisa 13L

EZ Top Gun 18T

BB Lulu 12X

EZ Sparkle 26T

Bar J Sparks
Brambletye Perfection W334

This young Marco son unfortunately froze his ears on an icy, cold November day, but he has a terrific pedigree loaded with greats like Lisbon, Sparks, Bar J Miracle, Perfection W334 and St. Louise S208.



Lot 60

61 EZ Linebacker 2Z

Fullblood Bull

Reg: FM24139

BD: 4/1/12

Tattoo: EZ2Z

Black

Commander Bligh N076

Commander K162
Brambletye Felicity J167

EZ Outback 50X

Brambletye Red Sky R177

Admiral Fitzroy
Brambletye Sunshine Too M442
Mugga Majura
Trangie J325

Athanlee Herman R007

EZ Felicity 47X

Brambletye R144

Commander VIII P108
Brambletye Felicity II M048

Here's a grass-fed beef machine – moderate and meaty. His sire traces to the No. 1 cow in the Australian herdbook, Madam C208, who produced until she was 17 years old.



Lot 61



LOWLINE *Embryos*



62 Red Fullblood Embryos

Rob Roy is a 2008 son of Awesome Red out of Camdon Ruby who does not have the word "Bluey" in his pedigree. He is currently the herd sire for Rocking B Farms, Needville, TX. This powerfully well muscled red fullblood bull puts big tops and big butts in his offspring.



4C

red fullblood heifer calf by Rob Roy and out of 4Y11.



7C

a red fullblood bull calf by Rob Roy and out of 4Y11.

2 Fullblood embryos sired by Rob Roy

1 embryo out of EZ Crimson Marnie 64U FF8639

(red gene carrier)

1 embryo out of Lazy G Red Coral FF14344 (red fullblood)



Lazy G Red Coral 4Y11

Donor



EZ Crimson Marnie 64U

donor, and her red fullblood bull calf, EZ Redwood, 2014 American Royal Grand Champion Fullblood Pair.

63 Red Moderator Embryos

Miss XL W96E is an attractive, easy- fleshing, good-udderedm registered red SimAngus cow sired by the Leachman Cattle Co.'s Red Angus bull LCC Field Day. Her offspring have been consistent, excellent performers regardless of the Lowline sire we've mated her to. She has produced a herd sire for the Danilson Farms herd in Iowa and Dave Jensen in Minnesota.



Miss XL W96E

Donor



Legend



EZ 144A

a red halfblood bull sired by Legend and out of Miss XL W96E



Infrared



Boxcar



EZ 121Z

a red halfblood heifer sired by Legend and out of Miss XL W96E

64 Fullblood Embryos

These are no-miss show prospects, bull or heifer!

4 fullblood embryos out of the Reserve National Champion, EZ Lady Luck 51N

2 sired by the Australian National Champion Jackaroo

2 sired by the Reserve National Champion Boxcar



EZ Lady Luck 51N



Jackaroo



Boxcar



LOWLINE *Breeding Privileges*



Each female lot in the sale sells with breeding privileges to our Effertz EZ Ranch herd bull battery. Effertz EZ Ranch will provide two straws of semen and one AI certificate for one calf out of the cow purchased in the sale. The shipping costs for the semen will be the buyer's responsibility. Buyers are welcome to bring their semen tanks to the sale and pick up semen then.

Because of extremely limited supply, semen on Beau Lad, Lexus, Utah and Gus will not be available for breeding privileges, and Jackaroo semen is not available for breeding privileges.

Pictured here are many of our herdsires. Complete pedigrees are available on our website www.loala.com or call us for more information.

Semen is available on many of these bulls for \$25/straw. Legend semen is not available for sale. If you need to purchase semen and want to save shipping expenses, call ahead so we are sure we have what you need here in our tank and you can pick it up sale day.



Lisbon 29L



Clout 27H



Gunslinger



EZ Captain Jack 1X



Houdini 22N

Bonanza's Boxcar..... FM15218
EZ Captain Jack 1X..... FM10440
ALM Dakota Pride 60J..... FM647
Alta Demolition (Red Gene)... FM21737
EZ Durbin 69J FM1930
EZ Houdini 22N FM3126
Alta Legend 132X (Red) FM12740
EZ Lisbon 29L FM1756
Little Joe FM3119
EZ Magnum 72J FM1909
Marco 9W (Red Gene) FM9163
EZ Pistol 23P..... FM2829
Quartermaster Q117 FM1
"Rudy" (Red) FM7126
EZ Sherman 24J..... FM840
Bar J Sultan 6S96 FM7211
EZ Titan 7T FM6146
Ultra Beau U321 FM36
EZ Update 16U FM7549

Imported Bulls:

Admiral J222 AULM2
Bosun's Mate N066 AULM74
Captain III N063..... AULM104
Commander II M045..... AULM32
Commander Bligh N076 AULM75
Midshipman M206..... AULM43
Nevada N060 AULM685

Percentage Bulls:

Doll House Gunslinger..... XM16372
EZ Pride 304P XM5447
Bar J Red Baron S63 (Red)..... XM4852
EZ Sawyer 321S (Red Gene) .. XM8521
EZ Sundance 10Y..... MM21036



EZ Update 16U



Dakota Pride 60J



Alta Legend B1L132X



Quartermaster Q117



DLW Little Joe 305R



Magnum 72J

Doing more with less.

This is a picture of an efficient cowherd. It was taken on our ranch in North Dakota on February 21, 2015. It was 5 degrees and the wind chill was about 20 below. As you can see, our Lowline cows are in good shape and are content. The cows are still out picking on a stubble field. We are supplementing them with about 12#/head/day of hay, roughly 50% **LESS** than the hay other North Dakota cattle operations feed throughout the winter months. This cowherd has allowed us to **DO MORE WITH LESS**.

Before we started in the Lowline business, we raised 110 big cows on this ranch. As we became aware of how efficient and low maintenance these Lowline cows are, we started expanding our cow numbers. On no more acres, we now run **MORE** cows (over 250) and most are at least halfblood Lowlines.

Throughout the transition we bred an incredible number of first calf heifers. We don't get up at night to check them and our vet bills have been cut dramatically. We moved our calving dates back, quit creep feeding and we require much **LESS** hired help. Life on the ranch is **MORE** satisfying.

Our thriving grass fed beef enterprise provides our customers with wonderful beef that's healthy and in a carcass and portion size that appeals to today's consumers.

We now raise dramatically **MORE** pounds per acre. We have much **MORE**, nearly double, the opportunity to sell replacement heifers and bulls as breeding stock. Without a doubt these smaller framed cattle have dramatically influenced our bottom line both by increasing revenue but also by reducing costs and labor.

Every year at our Discover Lowline Weekend, we try to provide speakers and cattle that will help you **DO MORE WITH LESS**. We hope you can join us.





LOWLINE *Terms and Conditions*



Terms: Terms of the sale are cash or check payable immediately upon conclusion of the sale and before animals will be moved. Seller will reserve the right to require a certified check as settlement before releasing any cattle.

Insurance of Purchases and Risk: All animals are the seller's risk prior to their sale and become property of the buyer as soon as declared sold by the auctioneer. Arrangements will be made to have insurance available when making settlement. Cattle left at Effertz EZ Ranch after the sale must be insured by the purchaser.

Bidding: All animals sell to the highest bidder. Any disputes or challenges regarding bids will be settled by the auctioneer and his decision will be final.

Health Papers: Our vet will be on hand to write interstate health certificates.

Registration and Transfer: All animals sell with registration papers from the American Lowline Registry and will be transferred after the sale at the seller's expense.

Announcements: Any errors or changes of information contained in the catalog will be announced from the auction block and such announcements shall take precedence over information contained in the catalog.

Breeding Guarantee: Bred females in the sale have been pregnancy examined by a veterinarian and found to be safe in calf. Bred females and females with calves at side are considered to be breeders and no further guarantee applies. The open heifers selling are guaranteed to be breeders. If a female appears to be a non-breeder within 6 months of the sale (or within 6 months of when

she reaches breeding age) she may be returned to the seller at the buyer's expense. The seller will then reserve the right to prove the animal a breeder within a six month period, using any fullblood registered Lowline bull of his choice through AI or natural service. If successful, seller will return animal to buyer, again at buyer's expense. Should the animal fail to prove a breeder, the seller at his option may either return the purchase price to the buyer or replace the animal with another of equal value in full settlement and satisfaction of all claims. In no event shall the seller be responsible for more than the purchase price.

In case the animal in question should develop to be a problem breeder due to negligence or improper management by the buyer or if the female has been subjected to any hormonal or surgical reproduction techniques, the seller's guarantee does not apply. No guarantee is given that bred females will deliver a live calf. No guarantee is given that a female will produce eggs suitable for transplant.

All bulls are semen tested. No guarantee is given that a bull will produce semen that will freeze.

Liabilities: All persons who attend the sale do so at their own risk and Effertz EZ Ranch assumes no liability for any accidents that may occur. Neither does Effertz EZ Ranch assume any liability for loss or injury to livestock due to theft, mysterious disappearance, sickness, improper handling or Act of God.

Contract: The above terms and conditions shall constitute a contract between the buyer and the seller of each animal sold.

Mail bid: Mail or wire bids may be furnished. Bids must be in the hands of the sale staff in ample time prior to the sale and will be handled in strict confidence.





Neil and Jan Effertz and Family

17350 Hwy 1804 N. • Bismarck, ND 58503

701-223-5202 • 701-471-0153 Cell

www.loala.com • effertz@bektel.com

PRESORTED
FIRST-CLASS MAIL
U.S. POSTAGE PAID
LivestockDirect.net
PERMIT NO. 29

Discover Lowlines **WEEKEND**

Great Friends | Great Cattle | Great Fun!

Friday and Saturday,
June 5-6, 2015

On the ranch, Bismarck, ND

1 p.m. CDT

Selling 64 Lots of Lowline Cattle

