

*The West's source of calving-ease,
purebred, polled, Salers cattle*

To view a video of these bulls
and our program, visit
www.thewesthillsranch.com
or scan this QR bar code.



WHR PRIME CUT PRODUCTION SALE

March 14, 2015

1 p.m. MDT At the Ranch



Ryan Jarratt, Ranch Manager
307-248-1098 ryan@thewesthillsranch.com
www.thewesthillsranch.com
717 County Road 143, PO Box 144, Fairview, WY 83119

We'd love for you to join us in person, but if
you cannot make it to the sale, participate
online at **www.LiveAuction.TV**

Welcome Cattlemen!

WHR PRIME CUT PRODUCTION SALE

March 14, 2015

1 p.m. MDT At the Ranch

Dear Friends and Neighbors,

Welcome to the West Hills Ranch 5th annual Prime Cut Production Sale! It has been a year to remember in a lot of ways! Thanks to our customer's confidence and a great sale team, last year's sale was a success! We will be hosting the sale live at the ranch once again with the same format and a live stream online at liveauctions.tv. Continuing record high cattle prices have intrigued the industry. And in my personal life, meeting my now fiancée, Jessica DeVries, has also made this a year that will not be forgotten!

We have a solid set of herd bull prospects and replacement heifers to offer this year. These cattle come with advantages that include our Sound Breeder Guarantee, Docility Guarantee, calving-ease, moderate frames and complete performance information at sale time. We have a passion for helping you select cattle that will work. Whether you are looking to take advantage of the unique traits Salers offer in a PB herd or to maximize heterosis and breed complementarity in a hybrid animal, you can look to the West Hills Ranch for sound, docile, calving-ease, polled Salers cattle in a moderate frame.

The sale cattle will be on display the morning of the sale. Join us for a complementary lunch before the sale with the auction to follow at 1:00 pm MDT, March 14, 2015.

If you cannot make it to the ranch on Sale Day, be sure to log on at www.liveauctions.tv and register to bid. Registering in advance of the sale is not required, but is appreciated.

We would enjoy visiting with you or walking through the sale cattle anytime. We look forward to working with you and hope to see you Sale Day!

- *Ryan Jarratt*

Selling
80
Head } **48 Bulls**
19 Bred Heifers
(Registered & Commercial)
13 Open Heifers
(Registered & Commercial)



Ryan & Jessica

The West Hills Advantage

- Moderate frames
- Docility guarantee
- Sound breeder guarantee
- Raised at high altitude with no creep
- Fed to target health, not a standard gain until May for free
- Accurate birth weights
- 120 day performance test plus carcass ultrasound
- 1,300 lb., sound uddered females
- Strong maternal traits, longevity and calf survivability

To view a video of these bulls
and our program, visit
www.thewesthillsranch.com
or scan this QR bar code.



Ryan Jarratt, Ranch Manager
307-248-1098 ryan@thewesthillsranch.com
www.thewesthillsranch.com
717 County Road 143, PO Box 144, Fairview, WY 83119

We'd love for you to join us in person, but if you cannot make it to the sale, participate online at **www.LiveAuction.TV**

The West's source of calving-ease, PB, polled Salers cattle.



Sale Day Phone Numbers:

Ryan Jarratt, Ranch Manager (307) 248-1098
 Dean Pike, American Salers Assoc..... (303) 810-7605
 Kelly Troutt, Ringman..... (208) 584-3435
 Randy Hruska, Ranch Owner (307) 389-0987

Auctioneer Neil Effertz

Bidding: Each animal will be sold to the highest bidder. Any disputes will be settled by the auctioneer in charge. His decision is final.

Payment Terms: Terms of the sale are half due at sale time and the balance due at delivery.

Buyer's Risk: Each animal becomes the risk of the purchaser as soon as sold. Animals will be cared for as agreed, but at the purchaser's risk as to loss or injury.

Catalog Changes: Any changes from information printed in this catalog will be announced from the auction block at the time the animal is sold and such announcements shall take precedence.

Liability: All persons who attend the sale do so at their own risk and the management assumes to liability, legal or otherwise, for the safety or behavior of the animals.

Health: All cattle in this sale are in excellent condition and health. Health certificates will be furnished when needed for shipment anywhere

Retained Interest: In the foot notes of a few of these bulls, you will find the sentence "retaining 1/2 semen interest." This means that the West Hills Ranch is interested in using these bulls in their artificial insemination program. The bulls will be initially collected before delivery with no additional cost to the buyer. In the event that semen is sold in volume on any of these bulls, profits will be divided 50/50 between the West Hills Ranch and the purchaser.

Salers Breed Average EPDs				
BW	WW	YW	MWW	Milk
+1.5	+41	+79	+40	+20

Sale Day Raffle: The West Hills Ranch relies on the nutrition team at IFA to help manage the year round mineral program and bull nutrition. This year IFA is sponsoring a western print that will be raffled off on sale day. For every sale lot purchased, the buyer's name will be entered into the drawing at the end of the sale. We would like to say thank you to IFA for their continued customer service.

How Color Works in Cattle

Each individual box represents a possible color expressed by the progeny of these likely matings.

B = dominate black gene

r = recessive red gene

rr = red (homozygous)

BB = homozygous black

Br = heterozygous black, red carrier

	r	r
B	Br	Br
B	Br	Br

	r	r
r	rr	rr
r	rr	rr

	r	r
B	Br	Br
r	rr	rr

	B	r
B	BB	Br
r	Br	rr

Directions to West Hills Ranch:



From Hwy 89 South of Afton head West on Hwy 236 toward Fairview 2.6 miles.



At the stop sign turn left onto Bittercreek Road 0.3 miles.



Take the 2nd right onto County Road 143/Fairview S, 0.7 miles.



The West Hills Ranch is on the left.



The program behind the bulls....

- The bulls run with their mothers in the hills west of Star Valley until October. Since weaning, they have been offered free choice long hay and pail fed a bull development pellet from IFA mixed with steam flaked corn. The corn helps provide the necessary carbohydrates for maintenance and growth, while the pellet contains vitamin and mineral supplements and increases feed efficiency. Free choice long hay is always provided and we slowly increase the pail fed supplement to approximately 6.5 pounds per head per day during the cold weather. We provide the option to continue developing these bulls after the sale until May at no additional cost.
- The bulls have been vaccinated and boosted with Vision 8 and Bovishield Gold as well as poured with Dectomax this winter.
- Free delivery within 500 miles on \$4,000 purchases. They will have been fertility tested and carrying a current Trich tag.
- These bulls are guaranteed to remain sound breeders for the first breeding season.
- All bulls are also guaranteed to be docile to the buyer's satisfaction.
- 120 day performance test information since weaning will be available at sale time as well as carcass ultrasound data.
- We are excited to offer these bulls to you sound, healthy and range ready!



LiveAuctions.TV

Real-time bidding is available via the internet for this sale. Live audio and live video will allow buyers to bid on animals just as if they were present at the sale. Buyers must create an account prior to the sale. Please visit <http://www.LiveAuctions.tv> to create an account and request a buyer number.

Instructions are available at <http://www.LiveAuctions.tv> to walk you through the account setup process.

Web Address <http://www.LiveAuctions.tv>
LiveAuctions.tv, e-mail address brad@LiveAuctions.tv

Buyers who would like to bid via the internet must register with LiveAuctions.tv two days prior to the sale.

Heifers...

- The female offering in this year's sale includes registered and commercial heifers. New this year is the opportunity for customers that have been using WHR genetics to enter pens of commercial females in the sale. A couple customers have taken advantage of this partnership and entered both open and bred Salers heifers in this year's sale. These pens of commercial heifers consist of three heifers each and will be sold three times the money. The bred commercial heifers are guaranteed bred, but are sold without further guarantees.
- All bred females are guaranteed pregnant and the open heifers are guaranteed breedable. These bred heifers are in their working clothes and ready to earn their keep in any herd.
- All responsibility of the bred females is to be assumed by the purchaser within one week from the sale including pickup/delivery.
- We are offering the option to continue developing the open heifers until May at no additional cost.





The West Hills Ranch Program

We will take the opportunity here to give an overview of our program at the West Hills Ranch and explain how we are striving to be the west's source of calving-ease, PB, polled Salers cattle.

The cows kick off the annual cycle on the ranch by calving in April and May. When the breeding season rolls around the first of July, we synchronize and artificially inseminate for one breeding cycle then turn the herd bulls with the cows to finish up the breeding.

As the cattle graze the valley pastures, electric poly wire is used to create paddocks in which the cattle rotate in an intensive grazing system. In this grazing plan, pasture plants are allowed to complete their own life cycle before being harvested. As the cattle move across the land in a mob, impacts on the soil similar to roaming wildlife are simulated. Carbon mass and manure are spread on the soil surface to help build organic matter and soil health. As the cattle migrate into the mountains during the summer, individual pastures are divided as small as terrain will allow and grazed only once a year.

At weaning, the bull calves are fed a diet of free choice grass/alfalfa hay, a bull development pellet for added energy and feed efficiency and free choice mineral customized specifically for the West Hills Ranch. We are not looking

for fat bulls, but sound, firm breeders that will stand up under any breeding environment.

As the cows come out of the mountains with the deepening snow, purchased hay is made available in a bale-grazing fashion. Enough bales of hay and straw get set out for three or four days at a time. Feeding twice a week allows us to compensate for fluctuations in weather and wind chill. Only feeding enough for three to four days also decreases the lure of the plentiful wildlife such as elk and deer into the feed. Placing the hay strategically around the ranch leaves behind carbon mass once again in areas that need organic matter most. With this approach, we are also able to decrease the number of days the tractor gets started per week and free up the rest of the week to focus on office work, other interests, family, etc.

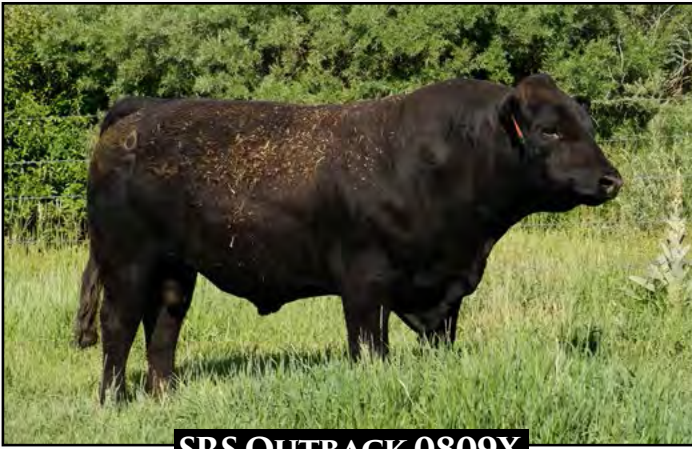
One of our popular interests is the endeavor to capitalize on species diversity by integrating a herd of pasture based, Tamworth hogs. These pigs grow up being rotated behind the cows in complementary pasture utilization. We will be direct marketing pork as well as some beef in the future.

Yet another summer activity will be to no-till a diversity of cover crops into a portion of the valley land. By grazing cover crops, we intend to increase pasture production through building soil health.



The West Hills Ranch specializes in offering calving-ease, moderate framed, sound bulls that have not been pushed on feed. We offer Salers genetics because we believe high altitude Salers cattle have the most potential to benefit programs that are looking for traits that include; Good dispositions, maternal superiority, sound traveling ability and vigor in newborn calves, all of which contribute to every rancher's quality of life. We will strive to find cattle that will fit your program and help you reach your goals as a producer.

Sincerely,
The West Hills Ranch Team
Randy, Pam and Ryan



SRS OUTBACK 0809X

A SRS OUTBACK 0809X Reg. #: P666354

Tattoo	BD	Breed%	Color	HPS	Adj. BW	Adj. WW	WWR
SRS0809X	1/26/10	PB	BLACK	POLLED	80	633	94

TSB OUTBACK 132U
SRS AURA 0809U

PCSL CZAR 47S
TSB PLD KARI 106S
SRS SAFE BET 9529S
SRS AURA 0122L

EPDs	
BW	+1.1
WW	+34
Milk	+24
YW	+74
MWW	+41

Dam's Prod.	
	3/100

There are many great ways to refer to this exceptional herd sire. Constant is one of the favorites. His calves are all polled, black and are born easy. His calves are moderate framed and easy going like himself. Still, they boast exceptional wean weight ratios due in part to thickness and depth of body.



KKCC OVERLOAD 211Z

C KKCC OVERLOAD 211Z Reg. #: TP683079

Tattoo	BD	Breed%	Color	HPS	Adj. BW	Adj. WW	WWR
KKCC211Z	3/17/12	PB	BLACK	POLLED	74	787	100

JCGC WIDE LOAD 1948W
KKCC BP CHATTER 123L

WPS BLK PLD GOLD 40T
KFI TWLIGHT48T
BEV MASTERPIECE 110H
KKCC GOSSIP 825H

EPDs	
BW	+3.1
WW	+51
Milk	+21
YW	+85
MWW	+46

Dam's Prod.	
	19/100
% of Cow Wt. Weaned	

This bull offers new genetics in easy growing calves with extended necks and attractive phenotypes.



MAC BLACK VISTA 349Y

B MAC BLACK VISTA 349Y Reg. #: P676083

Tattoo	BD	Breed%	Color	HPS	Adj. BW	Adj. WW	WWR
MAC349Y	4/1/11	87.5%	BLACK	POLLED	75	602	95

MAC TORRINGTON 139T
MAC PANORAMA 302P

MAC NAVIGATOR 281N
JMAC LOLITA 2L
MAC LENNOX 314L
MAC KATERINA 2/2 167K

EPDs	
BW	+0.5
WW	+37
Milk	+23
YW	+67
MWW	+41

Dam's Prod.	
	7/102

A moderate birth weight bull that packs his calves with extra thickness and lots of muscle.



OPP 239Z OF 70U

D OPP 239Z OF 70U Reg. #: P681404

Tattoo	BD	Breed%	Color	HPS	Adj. BW	Adj. WW	WWR
OPP239Z	2/5/12	87.5%	RED	POLLED	75	702	102

AVS OUT WEST 210X
S POLLED LADY 70U

MAC TOPEKA 159T
JCG JAMACA ROSE
GGT P BLK TANK 144R
S BLACK LADY 70R

EPDs	
BW	+1.1
WW	+38
Milk	+22
YW	+78
MWW	+41

Dam's Prod.	
	5/97

A moderate framed red bull that stamps his calves with a lot of guts and good dispositions.

BIG SKY SOLUTION 31Z

Reg. #: P684458

Tattoo	BD	Breed%	Color	HPS	Adj. BW	Adj. WW	WWR
SKY31Z	3/28/12	PB	BLACK	POLLED	74	620	103

OPP DUKE 922W OF 4M NJF TOP LEVEL 41T
 OPP BLACK LADY 4M
 BIG SKY MISS HITTER 33X GGT P BLK HEAVY HITTER
 BIG SKY MISS STOUT 59U

EPDs	
BW	-2.5
WW	+32
Milk	+26
YW	+66
MWW	+42

Dam's Prod.	
	3/105

When we purchased this young herd bull, it was said that he may just come in and watch TV he is so gentle. His calves are no different! His all polled, light birth weight calves have exceptional growth.



OPP WEST STAR 938W

OPP WEST STAR 938W

Reg. #: P659042

Tattoo	BD	Breed%	Color	HPS	Adj. BW	Adj. WW	WWR
OPP938W	2/11/09	PB	BLACK	POLLED	88	628	92

MAC TOPEKA 159T MAC NOX 382N
 MAC ROYANN 100R
 OPP BLACK LADY 9R S MARSHAL 223M
 OPP BLACK LADY 6N

EPDs	
BW	-0.7
WW	+27
Milk	+9
YW	+65
MWW	+23

Dam's Prod.	
	8/102

Calving ease, polled and black are traits that this bull stamps on every one of his calves. He is an ASA light birth weight trait leader.



MAC F1 SUNDANCE 4S

WHR YO DIAMOND 103Y

Reg. #: S672181

Tattoo	BD	Breed%	Color	HPS	Adj. BW	Adj. WW	WWR
WHR103Y	4/26/11	PB	BLACK	SCURRED	78	691	114

JCG DIAMOND JSR JAMACA 431
 JCG CARMA
 RAO TONIA 703T MAC RICHLAND 211R
 CRO ROJO 519R

EPDs	
BW	-0.7
WW	+32
Milk	+25
YW	+61
MWW	+41

Dam's Prod.	
	6/105

A light birth weight herd sire owned in partnership with Ahtanum Valley Salers and Joe Gellings.



OPP SABER 847U

OPP SABER 847U

Reg. #: P650874

Tattoo	BD	Breed%	Color	HPS	Adj. BW	Adj. WW	WWR
OPP847U	2/12/08	62.5%	BLACK	POLLED	89	725	112

OPP SABER 616S S A V 8180 TRAVELER 004
 OPP BLACK LADY 48P
 OPP BLACK LADY 9R S MARSHAL 223M
 OPP BLACK LADY 6N

EPDs	
BW	+0.3
WW	+52
Milk	+28
YW	+98
MWW	+55

Dam's Prod.	
	8/102

Saber is a proven optimizer sire out of a great cow that has placed herd bulls in many premier cattle operations.

MAC F1 SUNDANCE 4S

Reg. #: TP633598

Tattoo	BD	Breed%	Color	HPS	Adj. BW	Adj. WW	WWR
MAC4S	1/28/06	50.0%	BLACK	POLLED	81	705	100

RITO 112 OF 2536 RITO 616 RITO 616 OF 4B20 6807
 G A R PRECISION 2536
 MAC BLACK FLORA 6F SPRINGDALE GUS 10C
 WYNONA 02D

EPDs	
BW	+0.1
WW	+53
Milk	+28
YW	+113
MWW	+54

Dam's Prod.	
	32/100

An AI optimizer sire that adds exceptional performance and carcass traits to an attractive design.

1 WHR5B

Reg. #: P698315

Tattoo	BD	Breed%	Color	HPS	Adj. BW	Adj. WW	WW
WHR5B	3/24/14	PB	RED	POLLED	74	599	102

MAC BLACK VISTA 349Y
WHR ZELDA 80Z

MAC TORRINGTON 139T
MAC PANORAMA 302P
OPP WEST STAR 938W
RAO TONIA 703T

EPDs	
BW	-0.5
WW	+32
Milk	+23
YW	+64
MWW	+39

Dam's Prod.
1/102
% of Cow Wt. Weaned
63%

This red heifer bull prospect combines a light birth weight with above average growth in an outstanding profile.



2 WHR207B

Reg. #: P698359

Tattoo	BD	Breed%	Color	HPS	Adj. BW	Adj. WW	WW
WHR207B	3/25/14	PB	BLACK	POLLED	69	533	91

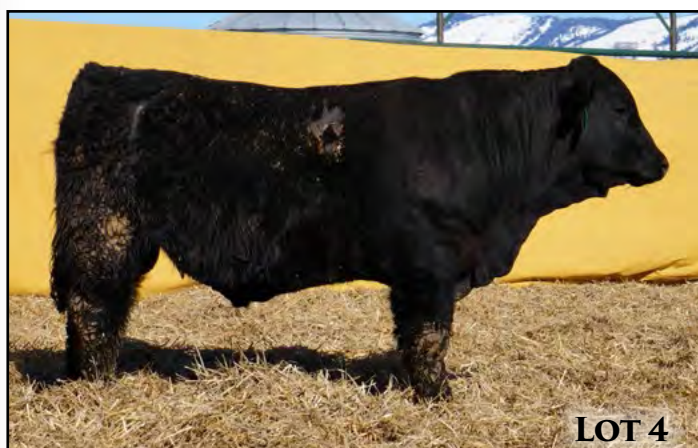
WHR YO DIAMOND 103Y
WHR ZELDA 149Z

JCG DIAMOND
RAO TONIA 703T
OPP WEST STAR 938W
BEAR MS SISSY 236U

EPDs	
BW	-1.0
WW	+31
Milk	+18
YW	+65
MWW	+34

Dam's Prod.
1/91
% of Cow Wt. Weaned
50%

Heifer bull prospect.



4 WHR12B

Reg. #: P698279

Tattoo	BD	Breed%	Color	HPS	Adj. BW	Adj. WW	WW
WHR12B	3/28/14	PB	BLACK	POLLED	84	657	112

BIG SKY SOLUTION 31Z
WHR ZELDA 17Z

OPP DUKE 922W OF 4M
BIG SKY MISS HITTER 33X
MAC TOPEKA 159T
XANDERIA 183 115TSB

EPDs	
BW	+1.2
WW	+48
Milk	+23
YW	+88
MWW	+47

Dam's Prod.
1/112
% of Cow Wt. Weaned
66%

The data on this set of genetics is extremely impressive! His first calf mother weaned him at 66% of her own body weight, bred back the first cycle, and poised to work her way to the top of our cow herd. He is thick made and long bodied with a powerful rear end. Retaining 1/2 semen interest.

5 WHR15B

Reg. #: P698348

Tattoo	BD	Breed%	Color	HPS	Adj. BW	Adj. WW	WW
WHR15B	3/29/14	PB	BLACK	POLLED	79	597	102

WHR YO DIAMOND 103Y
WHR ZELDA 138Z

JCG DIAMOND
RAO TONIA 703T
OPP WEST STAR 938W
NJF MISS BROKER 843U

EPDs	
BW	+0.7
WW	+37
Milk	+21
YW	+70
MWW	+40

Dam's Prod.
1/102
% of Cow Wt. Weaned
62%

Heifer bull prospect.



6 WHR148B

Reg. #: P698332

Tattoo	BD	Breed%	Color	HPS	Adj. BW	Adj. WW	WW
WHR148B	3/31/14	PB	BLACK	POLLED	92	655	100

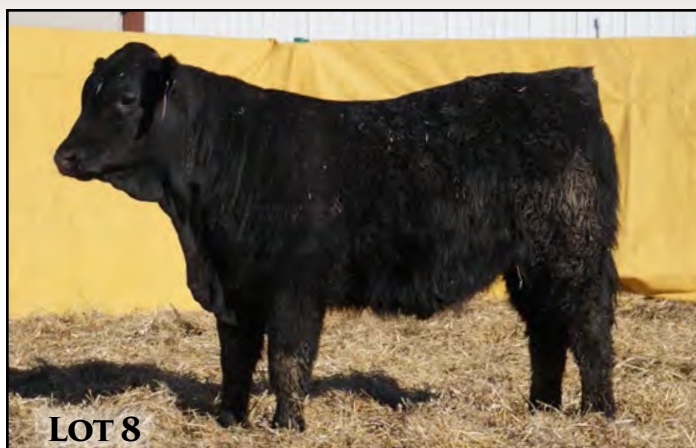
MAC BLACK VISTA 349Y
WHR ZELDA 110Z

MAC TORRINGTON 139T
MAC PANORAMA 302P
SRS OUTBACK 0809X
PCSL UNLIMITED

EPDs	
BW	+2.9
WW	+45
Milk	+25
YW	+84
MWW	+47

Dam's Prod.
1/100
% of Cow Wt. Weaned
NA

This performance bull is the heaviest PB in the sale offering. A tremendous amount of body with a great profile.



7 WHR20B

Reg. #: P698350

Tattoo	BD	Breed%	Color	HPS	Adj. BW	Adj. WW	WWR
WHR20B	4/3/14	PB	BLACK	SCURRED	82	630	108

WHR YO DIAMOND 103Y JCG DIAMOND
RAO TONIA 703T
WHR ZELDA 62Z SRS OUTBACK 0809X
NJF MISS FEIST 838U

.....
This bull is in the top five of each of the following categories; current weight, gain and scrotal circumference.

EPDs	
BW	+1.1
WW	+39
Milk	+25
YW	+72
MWW	+44
Dam's Prod.	
	1/108
% of Cow Wt. Weaned	
	67%

8 WHR22B

Reg. #: P698351

Tattoo	BD	Breed%	Color	HPS	Adj. BW	Adj. WW	WWR
WHR22B	4/4/14	PB	BLACK	SCURRED	74	520	89

WHR YO DIAMOND 103Y JCG DIAMOND
RAO TONIA 703T
WHR ZELDA 8Z OPP WEST STAR 938W
XANDERIA 98 155MJB

.....
A thick Yo Diamond son that would work well on heifers.

EPDs	
BW	-0.4
WW	+25
Milk	+19
YW	+58
MWW	+31
Dam's Prod.	
	1/89
% of Cow Wt. Weaned	
	NA

9 WHR32B

Reg. #: P698256

Tattoo	BD	Breed%	Color	HPS	Adj. BW	Adj. WW	WWR
WHR32B	4/14/14	PB	BLACK	POLLED	65	588	100

KKCC OVERLOAD 211Z JCGC WIDE LOAD 1948W
KKCC BP CHATTER 123L
MISS FEIST 8019U MBF PATHFINDER
MISS FEIST 612S

.....
Twin

EPDs	
BW	+1.5
WW	+40
Milk	+22
YW	+71
MWW	+42
Dam's Prod.	
	5/99
% of Cow Wt. Weaned	
	43%



Thank you!

A special thank you to the following WHR 2014 Prime Cut Production Sale Buyers:

- **Lawlar Angus/Gelbvieh** from Evanston, WY, for purchasing the \$5,750 high selling bull WHR17A.
- **Miller Ranch** of Farson, WY, for buying WHR40A for \$4,250.
- Volume buyers **Scott Barber**, Thayne, WY and **Fredrickson Ranch**, McCallister, MT.

To all the great customers that made the first four production sales a success, we wish to say thank you!



LOT 10

10 WHR38B

Reg. #: P698258

Tattoo	BD	Breed%	Color	HPS	Adj. BW	Adj. WW	WWR
WHR38B	4/15/14	PB	BLACK	POLLED	67	550	94

KKCC OVERLOAD 211Z JCGC WIDE LOAD 1948W
 KKCC BP CHATTER 123L
 MISS WESTHILL 13Y GGT P BK BACKLASH 170U
 RCM P BLK ULTRA 834U

A bull that is correct in so many ways. Light BW calf gaining 3 lb per day since weaning. A smooth, extended front end. Out of a beautiful, moderate framed cow with a great udder. Retaining 1/2 semen interest.

EPDs	
BW	-1.1
WW	+34
Milk	+17
YW	+59
MWW	+35
Dam's Prod.	
	2/97
% of Cow Wt. Weaned	
	52%

11 WHR44B

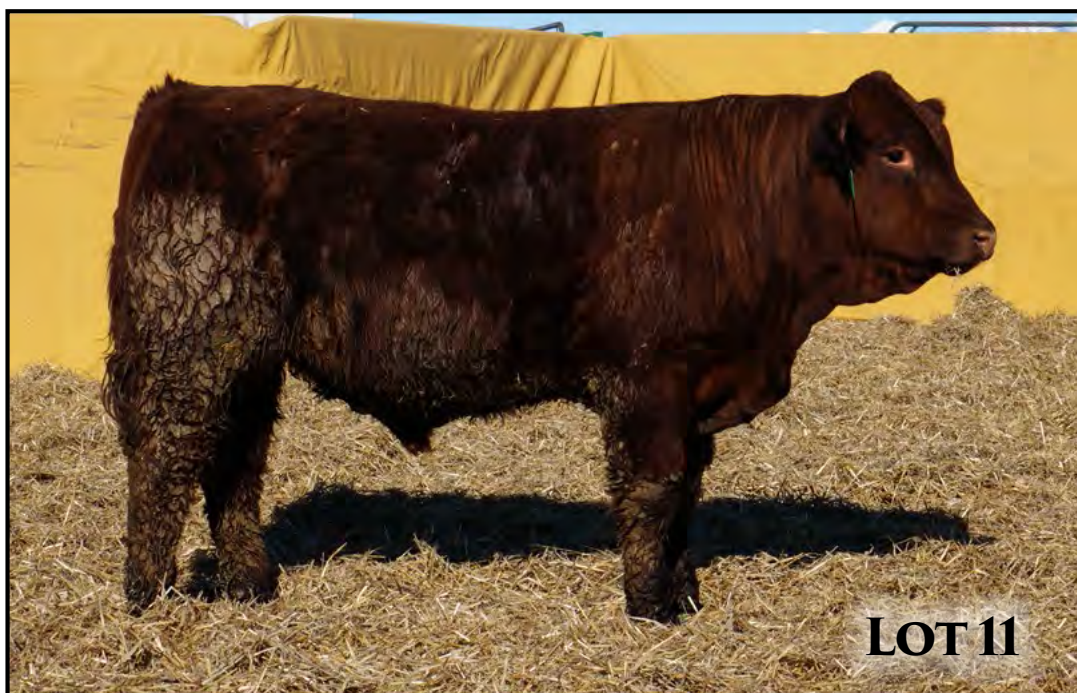
Reg. #: P698243

Tattoo	BD	Breed%	Color	HPS	Adj. BW	Adj. WW	WWR
WHR44B	4/16/14	PB	RED	POLLED	88	608	104

OPP 239Z OF 70U AVS OUT WEST 210X
 S POLLED LADY 70U
 RAO TANYA 18T RAO TOTAL ADVANTAGE 507R
 RAO 03N

A red herd bull prospect with a lot of guts and a moderate frame. A 32.5 cm scrotal circumference at 9.5 months old. Out of a proven, high volume cow. Retaining 1/2 semen interest.

EPDs	
BW	+1.3
WW	+39
Milk	+25
YW	+77
MWW	+44
Dam's Prod.	
	6/105
% of Cow Wt. Weaned	
	41%



LOT 11



13 WHR46B

Reg. #: P698319

Tattoo	BD	Breed%	Color	HPS	Adj. BW	Adj. WW	WWR
WHR46B	4/16/14	PB	BLACK	POLLED	85	632	108

MAC BLACK VISTA 349Y	MAC TORRINGTON 139T
	MAC PANORAMA 302P
XAN 35 KOTA 431	JSR JAMACA 431
	NJF MISS FEIST 8034U

A vista son that transfers his top 10 status for wean weight, current weight and ADG into extra thickness.

EPDs	
BW	+1.4
WW	+40
Milk	+23
YW	+75
MWW	+44
Dam's Prod.	
3/102	
% of Cow Wt. Weaned	
NA	

12 WHR45B

Reg. #: P698289

Tattoo	BD	Breed%	Color	HPS	Adj. BW	Adj. WW	WWR
WHR45B	4/16/14	PB	RED	POLLED	78	605	103

BIG SKY SOLUTION 31Z	OPP DUKE 922W OF 4M
	BIG SKY MISS HITTER 33X
NJF MISS FEIST 8024U	MAC LENNOX 314L
	NJF MISS FEIST 620S

Stamped with Solutions top traits; light birth weight, growth, length of body and easy disposition.

EPDs	
BW	+0.1
WW	+40
Milk	+23
YW	+76
MWW	+43
Dam's Prod.	
5/98	
% of Cow Wt. Weaned	
40%	

14 WHR53B

Reg. #: P698000

Tattoo	BD	Breed%	Color	HPS	Adj. BW	Adj. WW	WWR
WHR53B	4/17/14	PB	BLACK	SCURRED	83	579	99

SRS OUTBACK 0809X	TSB OUTBACK 132U
	SRS AURA 0809U
XANDERIA CASINO 180TDH	ETC PLD CASINO 520R
	TDH TIMBLE 779T

A deep bodied bull that is gaining well with Outback's gentle disposition.

EPDs	
BW	0.0
WW	+35
Milk	+20
YW	+70
MWW	+37
Dam's Prod.	
3/95	
% of Cow Wt. Weaned	
45%	

15 WHR57B

Reg. #: P698247

Tattoo	BD	Breed%	Color	HPS	Adj. BW	Adj. WW	WWR
WHR57B	4/18/14	PB	RED	POLLED	74	589	101

OPP 239Z OF 70U	AVS OUT WEST 210X
	S POLLED LADY 70U
XANDERIA 183 149MAC	PCSL UPRISING 54U
	MAC RED BLOSSOM 308U

Heifer bull prospect.

EPDs	
BW	-0.8
WW	+35
Milk	+21
YW	+68
MWW	+39
Dam's Prod.	
3/98	
% of Cow Wt. Weaned	
48%	

17 WHR64B

Reg. #: P698248

Tattoo	BD	Breed%	Color	HPS	Adj. BW	Adj. WW	WWR
WHR64B	4/19/14	PB	RED	POLLED	87	591	101

OPP 239Z OF 70U	AVS OUT WEST 210X
	S POLLED LADY 70U
XANDERIA 180 129RAO	PCSL U-R THE ONE
	RAO UTOPIA 04U

A moderate bull out of an easy fleshing cow.

EPDs	
BW	+1.4
WW	+38
Milk	+21
YW	+75
MWW	+40
Dam's Prod.	
3/98	
% of Cow Wt. Weaned	
44%	

16 WHR59B

Reg. #: P698003

Tattoo	BD	Breed%	Color	HPS	Adj. BW	Adj. WW	WWR
WHR59B	4/18/14	PB	BLACK	POLLED	91	657	112

SRS OUTBACK 0809X	TSB OUTBACK 132U
	SRS AURA 0809U
XANDERIA 180 50RAO	PCSL U-R THE ONE
	RAO TONIA 703T

This soggy made, moderate framed power wagon on tops every scale of performance.

EPDs	
BW	+1.4
WW	+41
Milk	+27
YW	+79
MWW	+47
Dam's Prod.	
1/112	
% of Cow Wt. Weaned	
53%	



18 WHR70B

Reg. #: P698005

Tattoo	BD	Breed%	Color	HPS	Adj. BW	Adj. WW	WWR
WHR70B	4/20/14	PB	BLACK	SCURRED	71	510	87

SRS OUTBACK 0809X

TSB OUTBACK 132U

SRS AURA 0809U

RAO TAMESHA 09T

MAC RICHLAND 211R

RAO RENELLE 23R

A light birth weight, moderate framed bull with a powerful rear end.

EPDs	
BW	-1.2
WW	+15
Milk	+25
YW	+44
MWW	+33
Dam's Prod.	
6/100	
% of Cow Wt. Weaned	
40%	

19 WHR71B

Reg. #: P698260

Tattoo	BD	Breed%	Color	HPS	Adj. BW	Adj. WW	WWR
WHR71B	4/20/14	PB	BLACK	SCURRED	72	636	109

KKCC OVERLOAD 211Z

JCGC WIDE LOAD 1948W

KKCC BP CHATTER 123L

MISS WEST HILL 47Y

JCG DIAMOND

RCM P BLK TONYA 731T

A light birth weight bull that weaned exceptionally heavy.

EPDs	
BW	-0.3
WW	+44
Milk	+19
YW	+74
MWW	+41

Dam's Prod.	
2/96	
% of Cow Wt. Weaned	
NA	

20 WHR72B

Reg. #: P698006

Tattoo	BD	Breed%	Color	HPS	Adj. BW	Adj. WW	WWR
WHR72B	4/21/14	PB	BLACK	POLLED	81	545	93

SRS OUTBACK 0809X

TSB OUTBACK 132U

SRS AURA 0809U

WHR 81Y

MAC TOPEKA 159T

NJF MISS FEIST 800U

Another layed back Outback son that is gaining well on test.

EPDs	
BW	+0.4
WW	+32
Milk	+19
YW	+67
MWW	+35

Dam's Prod.	
2/90	
% of Cow Wt. Weaned	
48%	

21 WHR77B

Reg. #: P698293

Tattoo	BD	Breed%	Color	HPS	Adj. BW	Adj. WW	WWR
WHR77B	4/22/14	PB	RED	POLLED	81	649	111

BIG SKY SOLUTION 31Z

OPP DUKE 922W OF 4M

BIG SKY MISS HITTER 33X

NJF MISS FEIST 895U

MBF PATHFINDER

NJF MISS FEIST 687S

An impressive spread between birth weight and wean weight with one of the highest WWRs.

EPDs	
BW	-0.4
WW	+39
Milk	+27
YW	+70
MWW	+46

Dam's Prod.	
4/102	
% of Cow Wt. Weaned	
43%	

22 WHR82B

Reg. #: P698324

Tattoo	BD	Breed%	Color	HPS	Adj. BW	Adj. WW	WWR
WHR82B	4/22/14	PB	RED	SCURRED	85	553	94

MAC BLACK VISTA 349Y

MAC TORRINGTON 139T

MAC PANORAMA 302P

DCS MISS TISIE T2

MAC NEUTRON 94N

DCS BLK LILY 7F

Good gaining calf with one of the larger scrotal measurements.

EPDs	
BW	+1.1
WW	+31
Milk	+20
YW	+62
MWW	+36

Dam's Prod.	
6/99	
% of Cow Wt. Weaned	
40%	

23 WHR84B

Reg. #: P698252

Tattoo	BD	Breed%	Color	HPS	Adj. BW	Adj. WW	WWR
WHR84B	4/22/14	PB	BLACK	SCURRED	83	606	103

OPP 239Z OF 70U

AVS OUT WEST 210X

S POLLED LADY 70U

NJF MISS FEIST 840U

KKCC MERCURY 416P

NJF MISS JETHRO 062K

This wide topped, moderate framed bull is balanced in his numbers and out of a great cow.

EPDs	
BW	+1.6
WW	+42
Milk	+20
YW	+83
MWW	+40

Dam's Prod.	
5/99	
% of Cow Wt. Weaned	
44%	





24 WHR85B

Reg. #: P698325

Tattoo	BD	Breed%	Color	HPS	Adj. BW	Adj. WW	WWR
WHR85B	4/22/14	PB	BLACK	POLLED	83	583	100

MAC BLACK VISTA 349Y	MAC TORRINGTON 139T
	MAC PANORAMA 302P
NJF MISS FEIST 874U	MBF PATHFINDER
	NJF MISS MASTERPIECE 540

Deep bodied and attractive phenotype.

EPDs	
BW	+1.6
WW	+34
Milk	+21
YW	+64
MWW	+38
Dam's Prod.	
5/100	
% of Cow Wt. Weaned	
NA	

25 WHR91B

Reg. #: P698262

Tattoo	BD	Breed%	Color	HPS	Adj. BW	Adj. WW	WWR
WHR91B	4/23/14	PB	BLACK	POLLED	86	644	110

KKCC OVERLOAD 211Z	JCGC WIDE LOAD 1948W
	KKCC BP CHATTER 123L
MAC WINNY 358W	MAC TUXEDO 174T
	MAC SAKOTA 386S

A big boned, easy fleshing, powerful bull with a 32.5 cm scrotal at 9 months and a mother with a near perfect udder score. Retaining 1/2 semen interest.

EPDs	
BW	+1.5
WW	+42
Milk	+24
YW	+75
MWW	+45
Dam's Prod.	
4/103	
% of Cow Wt. Weaned	
NA	

26 WHR92B

Reg. #: P698263

Tattoo	BD	Breed%	Color	HPS	Adj. BW	Adj. WW	WWR
WHR92B	4/24/14	PB	BLACK	POLLED	76	527	90

KKCC OVERLOAD 211Z	JCGC WIDE LOAD 1948W
	KKCC BP CHATTER 123L
MISS WESTHILL 14Y	GGT P BK BACKLASH 170U
	WHR WYO TOMOKY

A light birth weight bull gaining well on test.

EPDs	
BW	+0.1
WW	+33
Milk	+16
YW	+64
MWW	+33
Dam's Prod.	
2/90	
% of Cow Wt. Weaned	
49%	

27 WHR98B

Reg. #: P698253

Tattoo	BD	Breed%	Color	HPS	Adj. BW	Adj. WW	WWR
WHR98B	4/25/14	PB	RED	POLLED	90	573	98

OPP 239Z OF 70U	AVS OUT WEST 210X
	S POLLED LADY 70U
NJF MISS FEIST 878U	NJF FEIST'S MONOPOLY 01M
	LM 093K

Another easy going son of 239Z.

EPDs	
BW	+2.9
WW	+38
Milk	+20
YW	+74
MWW	+39
Dam's Prod.	
5/94	
% of Cow Wt. Weaned	
42%	

28 WHR99B

Reg. #: S698265

Tattoo	BD	Breed%	Color	HPS	Adj. BW	Adj. WW	WWR
WHR99B	4/25/14	PB	BLACK	SCURRED	79	544	93

KKCC OVERLOAD 211Z	JCGC WIDE LOAD 1948W
	KKCC BP CHATTER 123L
MIS WEST HILL 90Y	JCG DIAMOND
	NJF MISS FEIST 840U

A thick made, good gaining calf.

EPDs	
BW	+0.8
WW	+35
Milk	+17
YW	+65
MWW	+35
Dam's Prod.	
2/91	
% of Cow Wt. Weaned	
52%	

29 WHR101B

Reg. #: P698327

Tattoo	BD	Breed%	Color	HPS	Adj. BW	Adj. WW	WWR
WHR101B	4/25/14	PB	BLACK	POLLED	87	599	102

MAC BLACK VISTA 349Y	MAC TORRINGTON 139T
	MAC PANORAMA 302P
NJF MISS FEIST 8034U	JGK FLAT IRON 502P
	NJF MISS FEIST 260M

This bull is a power house! He is exceptionally wide based, thick over his top and promises to maximize pounds at weaning.

EPDs	
BW	+1.3
WW	+39
Milk	+23
YW	+72
MWW	+42
Dam's Prod.	
5/100	
% of Cow Wt. Weaned	
NA	

30 WHR102B

Reg. #: P698328

Tattoo	BD	Breed%	Color	HPS	Adj. BW	Adj. WW	WWR
WHR102B	4/26/14	PB	BLACK	SCURRED	95	681	116

MAC BLACK VISTA 349Y	MAC TORRINGTON 139T
	MAC PANORAMA 302P
XAN 25 SPARKOTA	PCSL SPARK
	NJF MISS FEIST 878U

EPDs	
BW	+2.9
WW	+51
Milk	+24
YW	+89
MWW	+49
Dam's Prod.	
3/113	
% of Cow Wt. Weaned	
54%	

31 WHR108B

Reg. #: P698330

Tattoo	BD	Breed%	Color	HPS	Adj. BW	Adj. WW	WWR
WHR108B	4/28/14	PB	BLACK	POLLED	84	611	104

MAC BLACK VISTA 349Y MAC TORRINGTON 139T
MAC PANORAMA 302P
MISS WEST HILL 30Y MAC TOPEKA 159T
ZBR MS ROXANNE WEST 100U

A Vista son that weaned 60% of his mother's weight.

EPDs	
BW	+1.1
WW	+37
Milk	+23
YW	+68
MWW	+41
Dam's Prod.	
2/100	
% of Cow Wt. Weaned	
60%	

32 WHR113B

Reg. #: P698267

Tattoo	BD	Breed%	Color	HPS	Adj. BW	Adj. WW	WWR
WHR113B	5/1/14	PB	BLACK	SCURRED	83	633	108

KKCC OVERLOAD 211Z JCGC WIDE LOAD 1948W
KKCC BP CHATTER 123L
RAO TONIA 703T MAC RICHLAND 211R
CRO ROJO 519R

A bull with some frame out of a cow with an ideal phenotype.

EPDs	
BW	+1.0
WW	+38
Milk	+28
YW	+71
MWW	+47
Dam's Prod.	
6/105	
% of Cow Wt. Weaned	
48%	

33 WHR116B

Reg. #: P698009

Tattoo	BD	Breed%	Color	HPS	Adj. BW	Adj. WW	WWR
WHR116B	5/6/14	PB	BLACK	POLLED	89	612	103

SRS OUTBACK 0809X TSB OUTBACK 132U
SRS AURA 0809U
NJF MISS FEIST 812U GGT P BLK RUMBLE 128S
NJF MISS JETHRO 669S

A thick made, clean fronted, moderate framed Outback son with a smooth design.

EPDs	
BW	+2.0
WW	+36
Milk	+26
YW	+72
MWW	+44
Dam's Prod.	
5/103	
% of Cow Wt. Weaned	
43%	

35 WHR126B

Reg. #: P698015

Tattoo	BD	Breed%	Color	HPS	Adj. BW	Adj. WW	WWR
WHR126B	5/12/14	PB	BLACK	POLLED	93	639	108

SRS OUTBACK 0809X TSB OUTBACK 132U
SRS AURA 0809U
FCF 601S FCF BLEDSOE H61L
INI J'AIME LES 5WFN

A larger framed bull out of a fullblood cow.

EPDs	
BW	+2.7
WW	+45
Milk	+24
YW	+83
MWW	+47
Dam's Prod.	
4/106	
% of Cow Wt. Weaned	
47%	

34 WHR125B

Reg. #: P698014

Tattoo	BD	Breed%	Color	HPS	Adj. BW	Adj. WW	WWR
WHR125B	5/12/14	PB	BLACK	POLLED	82	536	90

SRS OUTBACK 0809X TSB OUTBACK 132U
SRS AURA 0809U
TSB MISS MADELENE 87T TSB FRESNO 149R
TSB PLD ROSA 51J

A smaller framed bull.

EPDs	
BW	+1.0
WW	+29
Milk	+19
YW	+64
MWW	+33
Dam's Prod.	
6/95	
% of Cow Wt. Weaned	
38%	

36 WHR130B

Reg. #: P698017

Tattoo	BD	Breed%	Color	HPS	Adj. BW	Adj. WW	WWR
WHR130B	5/13/14	PB	BLACK	SCURRED	90	596	100

SRS OUTBACK 0809X TSB OUTBACK 132U
SRS AURA 0809U
MISS WEST HILL 75Y MAC UREILY 216U
NJF MISS FEIST 874U

A deep bodied, moderate framed Outback son.

EPDs	
BW	+2.1
WW	+33
Milk	+23
YW	+73
MWW	+39
Dam's Prod.	
2/104	
% of Cow Wt. Weaned	
NA	



37 WHR138B

Reg. #: P698345

Tattoo	BD	Breed%	Color	HPS	Adj. BW	Adj. WW	WWR
WHR138B	5/17/14	PB	BLACK	POLLED	82	560	94
BACK PREMIUM 36Y			GGT P BK BACKLASH 170U				
			JCG TONI				
MISS WEST HILL 28Y			GGT P BK BACKLASH 170U				
			WHR DIAMOND SODAK				
<hr/>							
EPDs							
BW							+1.6
WW							+37
Milk							+14
YW							+68
MWW							+32
<hr/>							
Dam's Prod.							
2/92							
% of Cow Wt. Weaned							
53%							

38 WHR142B

Reg. #: P698019

Tattoo	BD	Breed%	Color	HPS	Adj. BW	Adj. WW	WWR
WHR142B	5/19/14	PB	BLACK	POLLED	91	614	104
SRS OUTBACK 0809X			TSB OUTBACK 132U				
			SRS AURA 0809U				
RAO TYFANI 36T			MAC RICHLAND 211R				
			RAO RHONDA 07R				
.....							
Out of a moderate framed, big bodied cow.							
EPDs							
BW						+2.5	
WW						+38	
Milk						+29	
YW						+79	
MWW						+48	
Dam's Prod.							
6/108							
% of Cow Wt.							
Weaned							
46%							

Out of a moderate framed, big bodied cow.

West Hills Ranch Percentage Bulls



LOT 40

40 WHR11B

Reg. #: P697998

Tattoo	BD	Breed%	Color	HPS	Adj. BW	Adj. WW	WWR
WHR11B	3/28/14	93.0%	BLACK	POLLED	88	627	107
SRS OUTBACK 0809X			TSB OUTBACK 132U				
			SRS AURA 0809U				
WHR ZELDA 18Z			OPP WEST STAR 938W				
			XANDER 23-30FRT				
<hr/>							
Out of one of our smallest young cows mated to Outback that weaned 71% of the cows body weight and bred back the first breeding cycle.							
EPDs							
BW						+1.6	
WW						+39	
Milk						+20	
YW						+77	
MWW						+40	
<hr/>							
Dam's Prod.							
1/107							
% of Cow Wt. Weaned							
71%							

Out of one of our smallest young cows mated to Outback that weaned 71% of the cows body weight and bred back the first breeding cycle.

41 WHR76B

Reg. #: P698323

Tattoo	BD	Breed%	Color	HPS	Adj. BW	Adj. WW	WWR
WHR76B	4/21/14	89.8%	BLACK	POLLED	90	632	108
MAC BLACK VISTA 349Y			MAC TORRINGTON 139T				
			MAC PANORAMA 302P				
XAN 18 KOTA			JSR JAMACA 431				
			NJF MISS FEIST 802U				
<hr/>							
A soggy type bull that takes after his moderate,							
easy keeping mother that has a near perfect udder							
with lots of milk.							
EPDs							
BW						+2.3	
WW						+47	
Milk						+21	
YW						+84	
MWW						+44	
<hr/>							
Dam's Prod.							
3/101							
% of Cow Wt.							
Weaned							
49%							

A soggy type bull that takes after his moderate, easy keeping mother that has a near perfect udder with lots of milk.

42 WHR127B

Reg. #: P698342

Tattoo	BD	Breed%	Color	HPS	Adj. BW	Adj. WW	WWR
WHR127B	5/12/14	90.6%	RED	SCURRED	92	597	101
BACK PREMIUM 36Y			GGT P BK BACKLASH 170U				
			JCG TONI				
D 196 HEIDI 61455			W CHALLENGER 196L				
			D360 MISS SPECIAL 685F				
.....							
Gaining well on test.							
EPDs							
BW						+2.8	
WW						+44	
Milk						+11	
YW						+78	
MWW						+33	
Dam's Prod.							
6/98							
% of Cow Wt.							
Weaned							
42%							

Gaining well on test.

43 WHR67B

Reg. #: P698322

Tattoo	BD	Breed%	Color	HPS	Adj. BW	Adj. WW	WWR	
WHR67B	4/20/14	87.5%	BLACK	POLLED	80	666	114	
MAC BLACK VISTA 349Y			MAC TORRINGTON 139T					
			MAC PANORAMA 302P					
MISS WEST HILL 86Y			MAC SAMSON 418W					
			WHR WYO RAO DIAMOND					
.....							EPDs	
							BW	-0.7
							WW	+49
							Milk	+24
							YW	+83
							MWW	+49
A bull that matches his exceptional numbers with a nice phenotype.								
							Dam's Prod.	
								2/108
							% of Cow Wt. Weaned	
								64%

A bull that matches his exceptional numbers with a nice phenotype.



45 WHR135B

Reg. #: P698336

Tattoo	BD	Breed%	Color	HPS	Adj. BW	Adj. WW	WWR
WHR135B	5/17/14	81.3%	BLACK	POLLED	79	589	99

OPP WEST STAR 938W	MAC TOPEKA 159T
	OPP BLACK LADY 9R
MISS WEST HILL 4Y	OPP WARHORSE 915W
	WJM WENDA 114W

EPDs	
BW	+0.4
WW	+37
Milk	+14
YW	+81
MWW	+33

This bull is an attractive package if your looking for moderate frame, lots of muscle and depth of body. Heifer bull prospect. Half brother to WHR37A who we used AI last year. Retaining 1/2 semen interest.

Dam's Prod.	
	2/98
% of Cow Wt. Weaned	
	43%

LiveAuctions.TV

NEW!

Real-time bidding is available via the internet. Live audio and live video will allow buyers to bid on lots just as if they were present at the sale. A buyer account must be created prior to the sale. Go to <http://www.liveauctions.tv> If you cannot attend the sale because of weather, distance or business conflicts, please use LiveAuctions.tv Call [sale management] for assistance



44 WHR146B

Reg. #: P698020

Tattoo	BD	Breed%	Color	HPS	Adj. BW	Adj. WW	WWR
WHR146B	5/21/14	87.5%	BLACK	SCURRED	92	619	104

SRS OUTBACK 0809X	TSB OUTBACK 132U
	SRS AURA 0809U
TSB CRYSTAL 194U	MAC NEUTRON 94N
	MISS KEY RAYNA 182R

A young bull with a lot of thickness and growth.

EPDs	
BW	+3.4
WW	+48
Milk	+22
YW	+97
MWW	+46
Dam's Prod.	
	5/104
% of Cow Wt. Weaned	
	41%

46 WHR145B

Reg. #: P698339

Tattoo	BD	Breed%	Color	HPS	Adj. BW	Adj. WW	WWR
WHR145B	5/21/14	71.9%	BLACK	SCURRED	80	614	103

OPP WEST STAR 938W	MAC TOPEKA 159T
	OPP BLACK LADY 9R
D 20 PAIGE 413P	D IMPACT M20
	D PB MISS BULLETIN 430

An angular type optimizer.

EPDs	
BW	-0.8
WW	+32
Milk	+17
YW	+67
MWW	+33
Dam's Prod.	
	8/104
% of Cow Wt. Weaned	
	45%

47 WHR87B

Reg. #: P698277

Tattoo	BD	Breed%	Color	HPS	Adj. BW	Adj. WW	WWR
WHR87B	4/23/14	67.6%	BLACK	POLLED	92	605	103

OPP SABER 847U	OPP SABER 616S
	OPP BLACK LADY 9R
D 480 FOREVER LADY 642S	JD GREAT PLAINS 480P
	D 196 FOREVER LADY 4146P

This bull is living up to his performance EPDs continuing to be one of the top gaining optimizer calves on test.

EPDs	
BW	+2.6
WW	+49
Milk	+20
YW	+95
MWW	+44
Dam's Prod.	
	7/99
% of Cow Wt. Weaned	
	NA

48 WHR49B

Reg. #: P698361

Tattoo	BD	Breed%	Color	HPS	Adj. BW	Adj. WW	WWR
WHR49B	4/17/14	65.6%	BLACK	POLLED	67	521	89

OPP SABER 847U	OPP SABER 616S
	OPP BLACK LADY 9R
MISS WESTHILL 6Y	MAC WOODCHUCK 200W
	MAC WENDA 307W

Sure fire optimizer heifer bull with a wide base. Out of a light birth weight cow that has a perfect udder score!

EPDs	
BW	-2.5
WW	+31
Milk	+22
YW	+69
MWW	+37
Dam's Prod.	
	2/86
% of Cow Wt. Weaned	
	48%



LOT 49



49 WHR86B

Reg. #: P698309

Tattoo	BD	Breed%	Color	HPS	Adj. BW	Adj. WW	WWR
WHR86B	4/23/14	50.0%	BLACK	POLLED	91	649	111

MAC F1 SUNDANCE 4S RITO 112 OF 2536 RITO 616
 MAC BLACK FLORA 6F
 ZBR MS BLACK OPAL 029W MAC PRAIRIE WEST 378P
 SF BLACKBIRD 116

EPDs	
BW	+1.2
WW	+54
Milk	+26
YW	+103
MWW	+53

.....
 This bull is a testament to the power of heterosis. Second generation optimizer. He takes the trophy for the heaviest bull in this sale offering with one of the top ADGs and scrotal. Retaining 1/2 semen interest.

Dam's Prod.	
	4/104
% of Cow Wt. Weaned	
	52%



The West's source of calving-ease, purebred, polled Salers cattle

West Hills Ranch Open Heifers

50 WHR51B

Reg. #: P698362

Tattoo	BD	Breed%	Color	HPS	Adj. BW	Adj. WW	WWR
WHR51B	4/17/14	67.2%	BLACK	POLLED	78	495	92

OPP SABER 847U
XANDER 23-30FRT

OPP SABER 616S
OPP BLACK LADY 9R
PCSL UPRISING 54U
D 20 SIERRA 46P

EPDs	
BW	+0.6
WW	+34
Milk	+24
YW	+69
MWW	+40
Dam's Prod.	
	3/96



LOT 51

51 WHR121B

Reg. #: P698012

Tattoo	BD	Breed%	Color	HPS	Adj. BW	Adj. WW	WWR
WHR121B	5/10/14	PB	BLACK	POLLED	84	558	105

SRS OUTBACK 0809X
TSB CHELSEY 191T

TSB OUTBACK 132U
SRS AURA 0809U
LNJ LEVI 8M
TSB POLLED NINA 124K

EPDs	
BW	+2.2
WW	+42
Milk	+22
YW	+80
MWW	+43
Dam's Prod.	
	6/102



LOT 52

52 WHR144B

Reg. #: P698270

Tattoo	BD	Breed%	Color	HPS	Adj. BW	Adj. WW	WWR
WHR144B	5/21/14	PB	BLACK	POLLED	92	576	108

KKCC OVERLOAD 211Z
TSB MINNIE 36T

JCGC WIDE LOAD 1948W
KKCC BP CHATTER 123L
MAC NEUTRON 94N
TSB POLLED GLORY 67K

EPDs	
BW	+4.1
WW	+52
Milk	+21
YW	+90
MWW	+46
Dam's Prod.	
	6/97

53 WHR7B

Reg. #: P697997

Tattoo	BD	Breed%	Color	HPS	Adj. BW	Adj. WW	WWR
WHR7B	3/26/14	85.9%	BLACK	POLLED	69	460	86

SRS OUTBACK 0809X
WHR ZELDA 71Z

TSB OUTBACK 132U
SRS AURA 0809U
OPP WEST STAR 938W
D 20 SIERRA 46P

EPDs	
BW	+0.1
WW	+26
Milk	+17
YW	+62
MWW	+30
Dam's Prod.	
	1/86



LOT 54

54 WHR147B

Reg. #: P698271

Tattoo	BD	Breed%	Color	HPS	Adj. BW	Adj. WW	WWR
WHR147B	5/21/14	85.9%	BLACK	POLLED	84	550	103

KKCC OVERLOAD 211Z
WHR WYO SO RITE DIAMY

JCGC WIDE LOAD 1948W
KKCC BP CHATTER 123L
JCG DIAMOND
D 20 PAIGE 413P

EPDs	
BW	+2.8
WW	+43
Milk	+21
YW	+77
MWW	+42
Dam's Prod.	
	4/99

Req. #: P698333

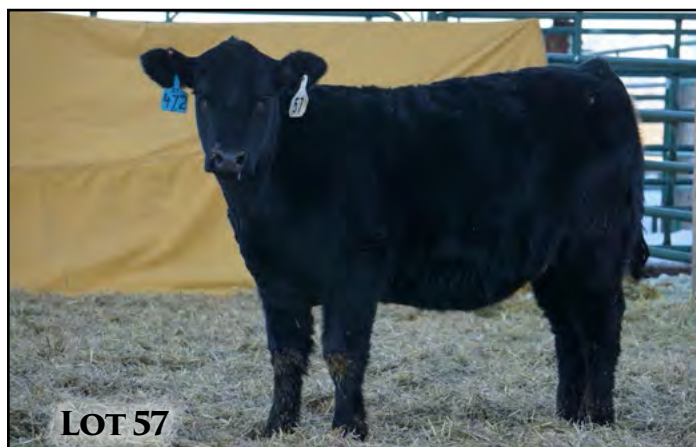
Tattoo	BD	Breed%	Color	HPS	Adj. BW	Adj. WW	WWR							
WHR117B	5/8/14	75.0%	BLACK	POLLED	67	506	95							
OPP WEST STAR 938W							EPDs							
							BW	-0.8						
ZBR TAKE-ME-WEST 20T							WW	+30						
							Milk	+14						
							YW	+64						
.....							MWW	+25						
							Dam's Prod.							
							6/97							

Req. #: P698334

Tattoo	BD	Breed%	Color	HPS	Adj. BW	Adj. WW	WWR							
WHR122B	5/10/14	75.0%	BLACK	POLLED	87	566	106							
OPP WEST STAR 938W							EPDs							
							BW	+2.3						
MJB MS CLASSIC 176T							WW	+48						
							Milk	+15						
							YW	+94						
.....							MWW	+39						
							Dam's Prod.							
							6/102							

Req. #: P698305

Tattoo	BD	Breed%	Color	HPS	Adj. BW	Adj. WW	WWR
WHR37B	4/15/14	53.1%	BLACK	POLLED	85	531	99
MAC SUMMIT 296Z			MAC HIGHPOINT 295X				
NJF MISS FEIST 884U			MAC SWAN 161S				
			SPRINGDALE BASIN MAX 41P				
			CKS MISS SATURN 17M				
EPDs							
BW						+2.8	
WW						+46	
Milk						+17	
YW						+98	
MWV						+41	
Dam's Prod.							
5/101							



Req. #: P698290

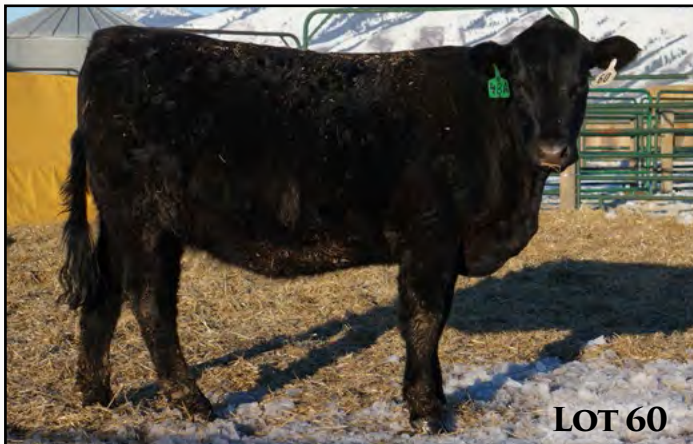
Tattoo	BD	Breed%	Color	HPS	Adj. BW	Adj. WW	WWR
WHR60B	4/19/14	50.0%	BLACK	POLLED	71	566	105
BIG SKY SOLUTION 31Z					EPDs		
					BW	-0.5	
					WW	+40	
VGW BO-ANK 0854					Milk	+22	
					YW	+71	
					MWW	+41	
.....							
Dam's Prod.							
5/102							



Req. #: P698306

Tattoo	BD	Breed%	Color	HPS	Adj. BW	Adj. WW	WWR	
WHR30B	4/12/14	46.9%	BLACK	POLLED	79	537	100	
MAC F1 SUNDANCE 4S			RITO 112 OF 2536	RITO 616	EPDs			
			MAC BLACK FLORA 6F		BW	+0.5		
D 20 SIERRA 46P			D IMPACT M20		WW	+42		
			D 9032 MISS SIERRA 271M		Milk	+23		
					YW	+89		
.....					MWW	+44		
					Dam's Prod.			
					9/100			

West Hills Ranch Bred Heifers



60 WHR 48A

Reg. #: P692525

Tattoo	BD	Breed%	Color	HPS	Adj. BW	Adj. WW	WWR
WHR48A	4/13/13	PB	BLACK	POLLED	72	569	106

SRS OUTBACK 0809X	TSB OUTBACK 132U
	SRS AURA 0809U
TSB TRESSA 102T	LNJ LEVI 8M
	TSB PLD JILL 21J

EPDs	
BW	+0.9
WW	+46
Milk	+20
YW	+85
MWW	+43

Bred to SKY Solution to calve May 15, 2015.

Dam's Prod.	
	6/104

61 WHR 65A

Reg. #: P692564

Tattoo	BD	Breed%	Color	HPS	Adj. BW	Adj. WW	WWR
WHR65A	4/16/13	PB	RED	POLLED	78	532	99

MAC CENTURION 240X	D CENTURY
	MAC RISSA 379R
NJF MISS BROKER 843U	GGT P BROKER 137K
	NJF BLACK MAGISTRATE 716

EPDs	
BW	+0.9
WW	+38
Milk	+24
YW	+67
MWW	+42

Bred to OPP Unlimited to calve April 7, 2015.

Dam's Prod.	
	5/100

62 WHR 72A

Reg. #: P692438

Tattoo	BD	Breed%	Color	HPS	Adj. BW	Adj. WW	WWR
WHR72A	4/17/13	PB	BLACK	POLLED	81	610	113

MAC TOPEKA 159T	MAC NOX 382N
	MAC ROYANN 100R
TSB CHRISTINE 62T	LNJ LEVI 8M
	TSB PLD ASHLEY 92J

EPDs	
BW	+2.2
WW	+54
Milk	+18
YW	+91
MWW	+45

Bred to WHR17A (WHR 2014 Production Sale high selling calving ease bull) to calve April 7, 2015.

Dam's Prod.	
	5/106

63 WHR 122A

Reg. #: P692498

Tattoo	BD	Breed%	Color	HPS	Adj. BW	Adj. WW	WWR
WHR122A	4/26/13	PB	BLACK	POLLED	79	531	99

SRS OUTBACK 0809X	TSB OUTBACK 132U
	SRS AURA 0809U
NJF MISS FEIST 8024U	MAC LENNOX 314L
	NJF MISS FEIST 620S

EPDs	
BW	+2.7
WW	+38
Milk	+22
YW	+75
MWW	+41

Bred to WHR17A (WHR 2014 Production Sale high selling calving ease bull) to calve April 7, 2015.

Dam's Prod.	
	5/98

64 WHR 133A

Reg. #: P692504

Tattoo	BD	Breed%	Color	HPS	Adj. BW	Adj. WW	WWR
WHR133A	5/3/13	PB	BLACK	POLLED	79	546	101

SRS OUTBACK 0809X	TSB OUTBACK 132U
	SRS AURA 0809U
XANDERIA 98 143BEAR	MAC TRAPPER 8T
	BEAR MS SISSY 236U

EPDs	
BW	+3.2
WW	+49
Milk	+20
YW	+90
MWW	+44

Bred to WHR Yo Diamond 103Y to calve April 7, 2015.

Dam's Prod.	
	3/101

65 WHR 146A

Reg. #: P692475

Tattoo	BD	Breed%	Color	HPS	Adj. BW	Adj. WW	WWR
WHR146A	5/7/13	PB	BLACK	POLLED	75	509	99

OPP WEST STAR 938W	MAC TOPEKA 159T
	OPP BLACK LADY 9R
XANDERIA 183 115TSB	PCSL UPRISING 54U
	TSB LISA 172U

EPDs	
BW	+0.9
WW	+33
Milk	+14
YW	+71
MWW	+31

Bred to WHR17A (WHR 2014 Production Sale high selling calving ease bull) to calve April 7, 2015.

Dam's Prod.	
	2/102



66 WHR147A

Reg. #: P692476

Tattoo	BD	Breed%	Color	HPS	Adj. BW	Adj. WW	WWR
WHR147A	5/7/13	PB	BLACK	POLLED	80	457	89

OPP WEST STAR 938W
 MAC TOPEKA 159T
 OPP BLACK LADY 9R
 TSB MISS MADELENE 87T
 TSB FRESNO 149R
 TSB PLD ROSA 51J

Bred to SKY Solution to calve May 15, 2015.

EPDs	
BW	+1.0
WW	+27
Milk	+11
YW	+66
MWW	+25
Dam's Prod.	
	6/95

Find us on

LiveAuctions.TV

Details on Page 4.



67 WHR162A

Reg. #: P692569

Tattoo	BD	Breed%	Color	HPS	Adj. BW	Adj. WW	WWR
WHR162A	5/17/13	90.6%	BLACK	POLLED	81	526	102

PCSL YOGI
 OPP SABER 847U
 PCSL WOO
 WHR WYO RAO DIAMOND
 JCG DIAMOND
 RAO TANESHA 17T

Bred to SKY Solution to calve April 7, 2015.

EPDs	
BW	+2.2
WW	+43
Milk	+22
YW	+75
MWW	+43
Dam's Prod.	
	3/99

68 WHR164A

Reg. #: P692570

Tattoo	BD	Breed%	Color	HPS	Adj. BW	Adj. WW	WWR
WHR164A	5/18/13	90.6%	BLACK	POLLED	89	546	106

PCSL YOGI
 OPP SABER 847U
 PCSL WOO
 WHR WYO DIAM MAC NAVI
 JCG DIAMOND
 MAC TARA 104T

Bred to SKY Solution to calve April 7, 2015.

EPDs	
BW	+3.3
WW	+45
Milk	+25
YW	+80
MWW	+47
Dam's Prod.	
	3/105

69 WHR94A

Reg. #: P692454

Tattoo	BD	Breed%	Color	HPS	Adj. BW	Adj. WW	WWR
WHR94A	4/19/13	67.2%	BLACK	POLLED	79	566	105

OPP SABER 847U
 OPP SABER 616S
 OPP BLACK LADY 9R
 WHR WYO SO RITE DIAMY
 JCG DIAMOND
 D 20 PAIGE 413P

Bred to OPP Unlimited to calve April 7, 2015.

EPDs	
BW	+0.9
WW	+44
Milk	+24
YW	+83
MWW	+46
Dam's Prod.	
	4/99



WHR-Influenced Commercial Females



PEN ONE

Group of three, open, commercial, Salers heifers from WHR customer's the EA Ranch in Dubois, Wyoming. Come see these easy going red heifers at the West Hills Ranch on sale day.



PEN TWO

A pen of three commercial, all black, range ready bred heifers to calve the second half of May. Bred to WHR 10Z, a proven calving ease West Hills Ranch raised bull. These heifers were raised by Don and Vicki Miller in Farson, Wyoming. Sold via video exclusively.



PEN THREE

Another pen of three commercial, all black, range ready bred heifers to calve the second half of May. Bred to WHR 10Z, a proven calving ease West Hills Ranch raised bull. These heifers were raised by Don and Vicki Miller in Farson, Wyoming. Sold via video exclusively.



PEN FOUR

This pen consists of two red and one black commercial, range ready bred heifers to calve the second half of May. Bred to WHR 10Z, a proven calving ease West Hills Ranch raised bull. These heifers were raised by Don and Vicki Miller in Farson, Wyoming. Sold via video exclusively.



The West Hills Ranch Story

Randy and Pam Hruska own the West Hills Ranch located in Fairview, Wyoming, one of the 12 communities nestled in Star Valley at an elevation of around 6,500 plus feet.

Hruska is a Czechoslovakian last name that when translated into English means pear. The West Hills Ranch brand, a pear on top of a number 7, stands for the English translation of Randy and Pam's last name Hruska and their 5 children totaling 7 in the family.

Randy has been in the retail hardware business, since he was 10 years old, working in his parents store in New Prague, Minnesota as a child.

Randy and Pam Hruska started in the commercial cattle business with 70 pairs and three Black Angus Bulls that they bought from Jim and Willard Wilson in 2001. In their second year they added about 50 more head and needed some more bulls. Jim Wilson said, "Why don't you try some composite bulls." Never having been in the cattle business before and only hearing all the "buzz" about Angus cattle, Randy asked, "What is a composite bull?" Jim explained the cross between Angus and Salers cattle.

Randy then bought Salers/Angus composites and started weaning 600 - 700 pound calves that were 7-8 months old at time of weaning. The Hruska's grew their operation to about 350 mother cows before selling out in the Fall of 2006. In the Spring of 2008, Pam and Randy started buying registered Salers heifers and have grown to just under 200 bred females.

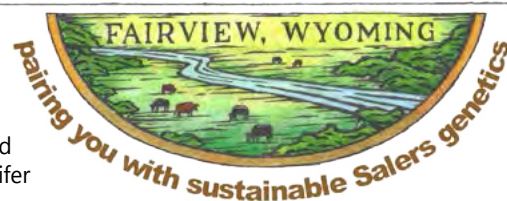
In May, 2010, Ryan Jarratt was hired as Ranch Manager. Ryan brings his enthusiasm for the Salers breed to the operation from Bismarck, North Dakota where he graduated from North Dakota State University with a major in Agricultural Economics. Ryan has been involved in the Salers breed since he purchased his first registered heifer when he was ten years old.

We thank you for your interest and hope that we can help you reach the goals of your operation.

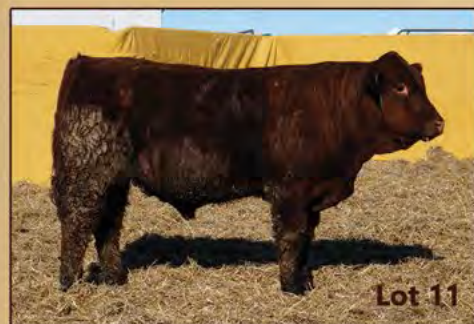
Truly,
The West Hills Ranch Team
Randy, Pam and Ryan



WEST HILLS RANCH



West Hills Ranch
PO Box 144
Fairview, WY 83119



WHR PRIME CUT
PRODUCTION SALE
March 14, 2015
1 p.m. MDT At the Ranch

