

Two Lowline Dispersals

Danilson Farms
Complete Lowline Dispersal

Grassline Cattle Co.
Mature Fullblood Cowherd Dispersal

Tuesday, February 10, 2015

6 p.m. • Colfax Livestock • Colfax, Iowa

Offering 56 Lots
Of Superb Lowline Genetics



Two Lowline Dispersals

Danilson Farms Lowline Dispersal and Grassline Cattle Co. Mature Fullblood Cowherd Dispersal

Tuesday, February 10, 2015

6 p.m. • Colfax Livestock • Colfax, Iowa

Offering 56 Lots of Superb Lowline Genetics

SALE DAY PHONES:

Neil Effertz, cell.....701-471-0153
Colfax Livestock515-674-2561

DIRECTIONS TO SALE SITE:

Colfax Livestock, 335 N. Walnut St., Colfax, Iowa
Colfax is about 20 miles Northeast of Des Moines
Take I 235 4 miles north of Des Moines to I 80. Take I 80
east for 17 miles to exit 155 (1A 117). Turn right for .7 mile.
Colfax Livestock will be on the right.

SPECIAL REPRESENTATIVES:

Dean Pike, American Lowline Registry303-810-7605
Tom Rooney, Midwest Marketer515-491-6025

SCHEDULE OF EVENTS:

Tuesday, February 10

Cattle ready for viewing throughout the day
5 p.m. Complimentary Lowline Beef Supper
6 p.m. Two Lowline Dispersal Sales
Colfax Livestock, Colfax, Iowa

Wednesday, February 11

11:30 a.m. Iowa Beef Expo Lowline Show
2:30 p.m. Iowa Beef Expo Lowline Sale
Iowa State Fairgrounds, Des Moines, Iowa

For information contact:

Shea Esser, 608-778-2913 or Al Conover, 641-227-3537

SUPPLEMENT SHEET:

Updated preg check and other information will be posted on our
website www.auctioneffertz.com.

REGISTRATION PAPERS:

All of the sale cattle are registered with the American Lowline Registry. Registration papers will be transferred to the buyer promptly after the sale at the seller's expense.

TRUCKING:

Auction Effertz, Ltd. will assist in making trucking arrangements.

INSURANCE:

Livestock insurance will be available at the settlement desk.

TERMS & CONDITIONS:

The sale will be conducted under a standard set of terms and conditions. Although this is a dispersal sale, the cattle sell fully guaranteed. Please refer to the inside back cover.

ABSENTEE BIDDING:

Real-time bidding is available via the internet. Please visit www.liveauctions.tv prior to the sale to create an account. If you have difficulty during the sale, please call 701-471-0153 or 701-471-0152.



Sale Manager:

Auction Effertz, Ltd.

Your Market Masters • NEIL & JAN EFFERTZ
effertz@bektel.com • Cell: 701-471-0153
17350 Hwy. 1804 N. • Bismarck, ND 58503
Ph: 701-223-5202 • Fax: 701-223-5458
www.auctioneffertz.com

Frame Down and Power Up ... with Lowline Genetics

Use Lowline genetics for ease of calving on first-calf heifers,
to reduce mature cow size while increasing muscle, carcass yield and quality.
Perfect for forage-based beef production systems.

Two Lowline Dispersals

Tuesday, February 10, 2015

6 p.m. • Colfax Livestock • Colfax, Iowa

Offering 56 Lots of Superb Lowline Genetics

Lots 18 – 20, 26 – 56

Grassline Cattle Co.

Mature Fullblood Cowherd Dispersal

Grant and Jaana McDonald

16225 100th St SW • Cokato, MN 55321
320-221-3446

Sale Manager's Comments:

Grant and Jaana have always demanded the highest quality fullblood Lowline genetics when assembling this herd from leading breeders across the U.S., Canada and Australia. Only in a mature cowherd dispersal like this do you have the opportunity to purchase the best cows in this great herd.

Grant and Jaana will offer two units of semen and one breeding certificate for use on each female purchased in this sale. The buyer can choose any of the herd bulls being retained by Grassline including Bonanza's Boxcar 3Y, EZ Captain Jack 1X and EBC Ace.



EBC Ace
2012 National
Champion
Percentage Bull
Breeding privileges
are offered.

Bonanza's Boxcar 3Y
2012 Reserve
National Champion
Fullblood Bull
Breeding privileges
are offered.



EZ Captain Jack 1X
2011 National Calf
Champion Bull
Breeding privileges
are offered.

Lots 1 – 17, 21 – 23

Danilson Farms

Lowline Dispersal

Dean Danilson

404 Hiddenwood Hollow • Jefferson, SD 57038
605-422-1761

Sale Manager's Comments:

Dean is retiring and completely dispersing his Lowline herd including his herdbull LL Jack, sired by the great Australian Champion Jackaroo. His herd revolves around two of the greatest fullblood individuals in the breed, the many time champion The Brick and the great donor Miss Jets Boris 80T.

These cattle are stout-made, well-muscled beef machines that exhibit all of the tremendous efficiencies of the Lowline breed.



Dean has always enjoyed good show cattle!

Guest Consignor:

Lots 24 – 25

Tummons Cattle

Brad and Julie Tummons

24242 Prairie Ave. • Gallatin, MO 64640
660-334-0011

Danilson Farm Females

1

DD BRICKS LASS 80T 109Y

Bred Fullblood Cow

Color: **Black** Tattoo: **DAD109Y** ALR# **FF15446** BD: **3/18/11**

Consignor: **Danilson Farms**

COLOMBO PARK ZEFFIRELLI
DOUBLE J'S THE BRICK 281
MISS JETS BRENTON 267K

BELL BRAE BORIS
JETS MISS BORIS 80T
MISS JETS BRENTON 268K

[APPERTARRA RANDY
COLOMBO PARK VIOLETTA
ELIZA PARK BRENTON
GLEN INNES N331

[BROKEN ARROW KAPTAIN MIDNIGHT
TRANGIE K004
ELIZA PARK BRENTON
BURRA OPAL

This productive 4-year-old Brick daughter has already produced a great young herd bull, Jack Daniels, shown in the 2015 National Show. She is pasture exposed to DDR LL Jack FM15421 from 6/26 - 9/25/14.



Jack Daniels, son of Lot 1

2

DD BRICKS LASS 80T 107Y

Bred Fullblood Cow

Color: **Black** Tattoo: **DAD107Y** ALR# **FF15445** BD: **3/16/11**

Consignor: **Danilson Farms**

COLOMBO PARK ZEFFIRELLI
DOUBLE J'S THE BRICK 281
MISS JETS BRENTON 267K

BELL BRAE BORIS
JETS MISS BORIS 80T
MISS JETS BRENTON 268K

[APPERTARRA RANDY
COLOMBO PARK VIOLETTA
ELIZA PARK BRENTON
GLEN INNES N331

[BROKEN ARROW KAPTAIN MIDNIGHT
TRANGIE K004
ELIZA PARK BRENTON
BURRA OPAL

Here's a full sister to Lot 1, a 4-year-old Brick Daughter out of 80T. She is pasture exposed to DDR LL Jack FM15421 from 6/26 - 9/25/14.

3

DAD BETSY JACK 107 318A

Bred Fullblood Heifer

Color: **Black** Tattoo: **DAD318A** ALR# **FF19964** BD: **4/29/13**

Consignor: **Danilson Farms**

YARRA RANGES JACKAROO
DDR LL JACK
EZ LEXIE LEE 46R

DOUBLE J'S THE BRICK 281
DD BRICKS LASS 80T 107Y
MISS JETS BORIS 80T

[COLOMBO PARK TANNHAUSER
MONTE ALLEGRO ZELMA
EZ LEXUS 18L
MUGGA LEE 9L

[COLOMBO PARK ZEFFIRELLI
MISS JETS BRENTON 267K
BELL BRAE BORIS
MISS JETS BRENTON 268K

This "Little Jack" heifer is also out of 80T and very nice. She is pasture exposed to DD Bricks Lad 124Y XM13428 from 6/26 - 9/25/14.

4

JETS MISS BORIS 80T

Fullblood Donor Cow

Color: **Black** Tattoo: **JJC80T** ALR# **FF6069** BD: **3/15/07**

Consignor: **Danilson Farms**

BROKEN ARROW KAPTAIN MIDNIGHT
BELL BRAE BORIS
TRANGIE K004

ELIZA PARK BRENTON
MISS JETS BRENTON 268K
BURRA OPAL

[KNIGHTCRAWLER M432
GLEN INNES N308
TRANGIE H153
TRANGIE H307

[BRAMBLETYE BOSUN L006
BRAMBLETYE SUZANNAH J369
BRAMBLETYE WARREGO
TRANGIE J304

This great donor Boris daughter has been the backbone of the Danilson herd and is out of the direct import embryo product, 268K. The Brenton daughters are top shelf. She is pasture exposed to DDR LL Jack FM15421 from 6/26 - 9/25/14.



Lot 4



DAD Jackie A756,
Lot 4's Jackaroo daughter

5

DAD BRICKS LASS 80T 403B

Fullblood Heifer

Color: **Black** Tattoo: **DAD403B** ALR# **Pending** BD: **4/2/14**

Consignor: **Danilson Farms**

COLOMBO PARK ZEFFIRELLI
DOUBLE J'S THE BRICK 281
MISS JETS BRENTON 267K

BELL BRAE BORIS
JETS MISS BORIS 80T
MISS JETS BRENTON 268K

[APPERTARRA RANDY
COLOMBO PARK VIOLETTA
ELIZA PARK BRENTON
GLEN INNES N331

[BROKEN ARROW KAPTAIN MIDNIGHT
TRANGIE K004
ELIZA PARK BRENTON
BURRA OPAL

Another great Brick daughter out of 80T.



Lot 5

Danilson Farm Females

6

DAD LIL JACKY 80T 407B

Fullblood Heifer

Color: Black

Tattoo: DAD407B

ALR# FF23486

BD: 6/1/14

Consignor: Danilson Farms

YARRA RANGES JACKAROO
DDR LL JACK
EZ LEXIE LEE 46R

[COLOMBO PARK TANNHAUSER
MONTE ALLEGRO ZELMA
EZ LEXUS 18L
MUGGA LEE 9L

BELL BRAE BORIS
JETS MISS BORIS 80T
MISS JETS BRENTON 268K

[BROKEN ARROW KAPTAIN MIDNIGHT
TRANGIE K004
ELIZA PARK BRENTON
BURRA OPAL

Here's a well muscled stylish LL Jack daughter out of the donor 80T.



Lot 6

7

DDR SWEET POD

Bred Fullblood Cow

Color: Black

Tattoo: DDR14X

ALR# FF11593

BD: 7/11/10

Consignor: Danilson Farms

COLOMBO PARK ZEFFIRELLI
DDR RAPTOR
SPCR LADDIE R04

[APPERTARRA RANDY
COLOMBO PARK VIOLETTA
BAR J BRENTON 1L10
SPCR LADDIE M02

UTAH
EZ SWEET PEA 49S
ALM PRAIRIE 40H

[NEVADA N060
BRAMBLETYPE BRONWYN II
ADMIRAL J222
BRAMBLETYPE TARA II

Sweet Pod's dam Sweet Pea is out of one of the biggest bodied fullblood cows in the breed, ALM Prairie 40H. She is pasture exposed to DDR LL Jack FM15421 from 6/26 - 9/25/14.



ALM Prairie 40H, granddam of Lot 7

8

DAD SWEET JACKIE 4X 404B

Fullblood Heifer

Color: Black

Tattoo: DAD404B

ALR# FF23483

BD: 4/13/14

Consignor: Danilson Farms

MCR OPINIONATED
BONANZA'S BOXCAR 3Y
BONANZA LLC STARR

[ARDROSSAN NERON
MCR BLUE FLAG
KOBBLEVALE CHUDLEIGH
BINOWEE STARR

DDR RAPTOR
DDR SWEET POD
EZ SWEET PEA 49S

[COLOMBO PARK ZEFFIRELLI
SPCR LADDIE R04
UTAH
ALM PRAIRIE 40H

She is a long sided, feminine Boxcar heifer out of the Lot 7 Sweet Pod cow.



Lot 8

9

DD SB BETS ON 80T 201Y

Bred Halfblood Cow

Color: Black

Tattoo: DAD201Y

ALR# XF16426

BD: 5/18/11

Consignor: Danilson Farms

STRICTLY BUSINESS MA

BELL BRAE BORIS
JETS MISS BORIS 80T
MISS JETS BRENTON 268K

[BROKEN ARROW KAPTAIN MIDNIGHT
TRANGIE K004
ELIZA PARK BRENTON
BURRA OPAL

Here is a great halfblood 80T daughter out of the clean pedigreed Maine Anjou bull Strictly Business. She is pasture exposed to DDR LL Jack FM15421 from 6/26 - 9/25/14.

10

EZ BAMBI 313Y

Bred 3/4 Cow

Color: Black

Tattoo: EZ313Y

ALR# XF15616

BD: 4/7/11

Consignor: Danilson Farms

BAR J SPARKS 4P16
EZ BUSTER 303U
EZ MISS BOSUN'S MATE 925J

[BAR J PONDEROSA OK13
BAR J TINA 8H3-OK48
BOSUN'S MATE
ANGUS COW

ALM DAKOTA PRIDE 316S
EZ MISS PRIDE 316S
EZ MS BOSUN'S MATE R17K

[NEVADA N060
BRAMBLETYPE MORVEN L004
BOSUN'S MATE
ANGUS COW

Bambi is a double 3/4 blood 4-year-old Buster daughter. She is bred to a DD SB Bets Off 100Y XM15451.

Danilson Farm Females & Steers

11

DAD MISS WHO 206Z

Bred 46.88% Cow

Color: **Black** Tattoo: **DAD206Z** ALR# **XF16735** BD: **4/4/12**

Consignor: **Danilson Farms**

MAINE ANJOU BULL
DOUBLE J'S DR. WHO 2U
MISS JETS ADMIRAL 03H

[ADMIRAL II L035
BRAMBLETYPE TARA III

DJR MR. LITTLE JOE 100S
DD MISS JOE 808U
DANILSON AN/XX COW

[MR. ROCKING BRENTON 270K
DJR ROCK'N MISS P89

She is a square hipped, stout topped, big bodied 47% heifer by the Dr. Who son, 2U. She is pasture exposed to DDR LL Jack FM15421 from 6/26 - 9/25/14.

12

DAD JACKS BET 201 102B

Open 3/4 Heifer

Color: **Black** Tattoo: **DAD102B** ALR# **Pending** BD: **5/21/14**

Consignor: **Danilson Farms**

YARRA RANGES JACKAROO
DDR LL JACK
EZ LEXIE LEE 46R

[COLOMBO PARK TANNHAUSER
MONTE ALLEGRO ZELMA
EZ LEXUS 18L
MUGGA LEE 9L

STRICTLY BUSINESS
DD SB BETS ON 8T 201Y
JETS MISS BORIS 80T

[BELL BRAE BORIS
MISS JETS BRENTON 268K

She's a fancy May 3/4 "Little Jack" daughter out of the Lot 9 cow.

13

DAD BETS OFF 967 31B

Open Halfblood Heifer

Color: **Black** Tattoo: **DAD31B** ALR# **Pending** BD: **4/26/14**

Consignor: **Danilson Farms**

STRICTLY BUSINESS
DD SB BETS OFF 100Y
JET'S MISS BORIS 80T

[BELL BRAE BORIS
MISS JETS BRENTON 268K

DAD BOBBIE 24A 01VW
DD BOBS LASS 967 110Y
DANILSON COMMERCIAL COW 967

[VITULUS YES YES YES
BAR J MIRACLE 7G9 2M42

Here's a nice double halfblood open heifer calf.

14

DAD BRICKS LASS 754B

Open Halfblood Heifer

Color: **Black** Tattoo: **DAD754B** ALR# **Pending** BD: **4/7/14**

Consignor: **Danilson Farms**

COLOMBO PARK ZEFFIRELLI
DOUBLE J'S THE BRICK 281
MISS JETS BRENTON 267K

[APPERTARRA RANDY
COLOMBO PARK VIOLETTA
ELIZA PARK BRENTON
GLEN INNES N331

CHI ANGUS COW

A nice halfblood Brick out of a Chi Angus cow.

15

DAD BRICKS LAD 757B

3/4 Steer

Color: **Black** Tattoo: **DAD757B** ALR# **Pending** BD: **4/15/14**

Consignor: **Danilson Farms**

COLOMBO PARK ZEFFIRELLI
DOUBLE J'S THE BRICK 281
MISS JETS BRENTON 267K

[APPERTARRA RANDY
COLOMBO PARK VIOLETTA
ELIZA PARK BRENTON
GLEN INNES N331

DD STRICTLY BUSINESS
DD BETSY BUSINESS 80T 103Y
JETS MISS BORIS 80T

[BELL BRAE BORIS
MISS JETS BRENTON 268K

This 3/4 Brick steer is long and heavy muscled – take him to Manhattan next summer.



Lot 15

16

DAD BRICKS LAD 752B

Halfblood Steer

Color: **Black** Tattoo: **DAD752B** ALR# **Pending** BD: **4/15/14**

Consignor: **Danilson Farms**

COLOMBO PARK ZEFFIRELLI
DOUBLE J'S THE BRICK 281
MISS JETS BRENTON 267K

[APPERTARRA RANDY
COLOMBO PARK VIOLETTA
ELIZA PARK BRENTON
GLEN INNES N331

CHI ANGUS COW

Here's a great registered halfblood show steer by the many times champion The Brick out of a Chi Angus base. He would work at Junior Nationals next summer in Manhattan, KS.



Lot 16

Fullblood Herd Bulls

17 DDR LL JACK

Color: **Black**

Tattoo: **DDR1Y**

ALR# **FM15421**

Fullblood Bull

BD: **5/3/11**

Consignor: **Danilson Farms**

COLOMBO PARK TANNHAUSER
YARRA RANGES JACKAROO
MONTE ALLEGRO ZELMA

THE GLEBE WOODSTOCK
AVONSLEIGH JEWEL
MONTE ALLEGRO DA VINCI
TERREBONNE VICTORIA

EZ LEXUS 18L
EZ LEXIE LEE 46R
MUGGA LEE 9L

NEVADA N060
BRAMBLETYE ST. LOUISE
UNION PACIFIC
ALM MID MUGGA 05J

LL Jack is a complete fullblood beef sire whose calves look great – he's a Jackaroo son and with the recent death of Jackaroo, there won't be more.



Jackaroo, sire of Lot 17

18 EZ TORCH 23T

Color: **Black**

Tattoo: **EZ23T**

ALR# **FM6319**

Fullblood Bull

BD: **4/23/07**

Consignor: **Grassline Cattle Company**

BAR J PONDEROSA 0K13
BAR J SPARKS 4P16
BAR J TINA 8H3-0K48

NEVADA N060
BAR J NELLIE 7G1
ELIZA PARK BRENTON
BAR J TINA 8H3

ADMIRAL J222
BRAMBLETYE ST. LOUISE
BRAMBLETYE AGNESS II

TRANGIE F249
TRANGIE F037
COMMANDER K162
GLEN INNES J306

The great St. Louise cow has produced over \$100,000 of offspring. This is one of her greatest breeding sons by Bar J Sparks.



Lot 18

19 AUSMERICA WURRUNG

Color: **Black**

Tattoo: **W006**

ALR# **FM9995**

Fullblood Bull

BD: **3/18/09**

Consignor: **Grassline Cattle Company**

APPERTARRA RANDY
COLOMBO PARK ZEFFIRELLI
COLOMBO PARK VIOLETTA

MUGGA MAJURA
TRANGIE J117
COLOMBO PARK TANNHAUSER
MUGGA SABRINA

MINIKIN QUINTUS
ARDROSSAN NARDIA
ARDROSSAN CARLA

TRANGIE J307
TRANGIE L232
BRAMBLETYE JAMES BOND L007
GLEN INNES J330

Wurrung's sire Zeffirelli has great tenderness and marbling markers. This great bull is out of the fabulous Carla daughter Nardia...a tremendous Australian pedigree!



Colombo Park Zeffirelli,
sire of Lot 19



Ardrossan Nardia,
dam of Lot 19

20 EZ PERFECTO 48X

Color: **Black**

Tattoo: **EZ48X**

ALR# **FM12079**

Fullblood Bull

BD: **2/25/10**

Consignor: **Grassline Cattle Company**

MUGGA MAJURA
ATHANLEE HERMAN
TRANGIE J325

ADMIRAL J222
TRANGIE J245
TRANGIE F239
TRANGIE E092

BRAMBLETYE THE BLOKE
BRAMBLETYE RISING SUN R153
BRAMBLETYE PERFECTION II H002

COMMANDER II M045
BRAMBLETYE PATIENCE II
TRANGIE E004
BRAMBLETYE PERFECTION 183

A tremendous breeding bull by Athanlee Herman, a direct import embryo from the winning Perfection cow family that was a foundation female in Australia's Brambletye herd.



Lot 20



Lot 20 as a calf

Lowline Bulls

21 DAD JACK 80T 401B

Fullblood Bull

Color: **Black** Tattoo: **DAD401B** ALR# **FM23480** BD: **4/18/14**
 Consignor: **Danilson Farms**

COLOMBO PARK TANNHAUSER YARRA RANGES JACKAROO MONTE ALLEGRO ZELMA	[THE GLEBE WOODSTOCK AVONSLEIGH JEWEL MONTE ALLEGRO DA VINCI TERREBONNE VICTORIA
BELL BRAE BORIS JETS MISS BORIS 80T MISS JETS BRENTON 268K	[BROKEN ARROW KAPTAIN MIDNIGHT TRANGIE K004 ELIZA PARK BRENTON BURRA OPAL

Here's an own son of Jackaroo out of the great 80T donor cow. His full sister is in the 2015 National Sale.

22 DAD JACK 80T 405B

Fullblood Bull

Color: **Black** Tattoo: **DAD405B** ALR# **FM23484** BD: **4/19/14**
 Consignor: **Danilson Farms**

COLOMBO PARK TANNHAUSER YARRA RANGES JACKAROO MONTE ALLEGRO ZELMA	[THE GLEBE WOODSTOCK AVONSLEIGH JEWEL MONTE ALLEGRO DA VINCI TERREBONNE VICTORIA
BELL BRAE BORIS JETS MISS BORIS 80T MISS JETS BRENTON 268K	[BROKEN ARROW KAPTAIN MIDNIGHT TRANGIE K004 ELIZA PARK BRENTON BURRA OPAL

Another great Jackaroo son of 80T.

23 DD BRICKS LAD 810U 757Y

71.88% Bull

Color: **Black** Tattoo: **DAD757Y** ALR# **XM15454** BD: **4/5/11**
 Consignor: **Danilson Farms**

COLOMBO PARK ZEFFIRELLI DOUBLE J'S THE BRICK 281 MISS JETS BRENTON 267K	[APPERTARRA RANDY COLOMBO PARK VIOLETTA ELIZA PARK BRENTON GLEN INNES N331
DJR MR. LITTLE JOE 100S DD MISS JOE 810U AN/BV DAM	[MR. ROCKING BRENTON 270K DJR ROCK'N MISS P89

This 71% deep sided Brick son is ready for lots of cows or heifers.



The Brick, sire of Lot 23

24 TCS JACKAROO 15A

Halfblood Bull

Color: **Black** Tattoo: **TCS15A** ALR# **MM22174** BD: **9/10/13**
 Consignor: **Tummons Cattle**

COLOMBO PARK TANNHAUSER YARRA RANGES JACKAROO MONTE ALLEGRO ZELMA	[THE GLEBE WOODSTOCK AVONSLEIGH JEWEL MONTE ALLEGRO DA VINCI TERREBONNE VICTORIA
OCC PRIORITY 882P TC ERICA 29X AN T6 ERICA 310 36	[OCC EUREKA 865E OCC DIXIE ERICA 907C T6 HI IMPACT 310 T6 ERICA 010 36

A long yearling by the Australian Champion Jackaroo from the Erica cow family.



Lot 24

25 TCS BEAU 37A

Halfblood Bull

Color: **Black** Tattoo: **TCS37A** ALR# **MM22171** BD: **10/18/13**
 Consignor: **Tummons Cattle**

BEAU LAD FAIRWYN'S LOW BEAU 204M GLEN INNES J306	[BEAU AARON M390 GLEN INNES M343 TRANGIE E088 GLEN INNES F403
FARMERS FOR YOUR EYES ONLY 74 FARMERS DIXIE ERICA 1019 AN BAR WICK 310 454 624	[OC HOMER 650H BARWICK 532 BAR WICK EUREKA 943 310 BAR WICK 823L 454

Here's an October born long yearling by the Low Beau bull that sired the \$85,000 Duff's Trust Me bull. A purebred Angus cow is his dam.



Lot 25

Grassline Cattle Co. Fullblood Females

26 EZ MANDIE 4S

Color: **Black**

Tattoo: **EZ4S**

ALR# **FF4589**

BD: **3/29/06**

Consignor: **Grassline Cattle Company**

COMMANDER K162
COMMANDER II M045
BRAMBLETYPE PERFECTION F183

[TRANGIE H153
[TRANGIE F259
[TRANGIE D039
[TRANGIE Z075

NEVADA N060
BRAMBLETYPE T983
TAINUI ANNE

[BRAMBLETYPE BOSUN L006
[GLEN INNES J389
[TRANGIE K073
[GLEN INNES K357

This fullblood daughter of the foundation Australian sire Commander II M045 is out of the dam of the great herdbull EZ Pistol 23P. She is bred to EZ Perfecto 48X FM12079.



EZ Pistol 23P, maternal brother to Lot 26

27 EZ SADIE 10S

Color: **Black**

Tattoo: **EZ10S**

ALR# **FF5453**

BD: **4/8/06**

Consignor: **Grassline Cattle Company**

NEVADA N060
EZ LEXUS 18L
BRAMBLETYPE ST. LOUISE

[BRAMBLETYPE BOSUN L006
[GLEN INNES J389
[ADMIRAL J222
[BRAMBLETYPE AGNESS II

BEAU LAD
EZ LADY JANE 4L
ITEN'S JAMIE 13G

[BEAU AARON M390
[GLEN INNES M343
[NAVIGATOR N323
[BRAMBLETYPE GERALDINE III

Sadie is royally bred by the St. Louise son Lexus out of the fabulous Beau Lad daughter EZ Lady Jane 4L. She is bred to GLT Unique U02 FM8247.



WMF Untouchable, maternal sister to Lot 27

28 RIVERWOOD JANE

Color: **Black**

Tattoo: **RF01S**

ALR# **FF4655**

BD: **5/11/06**

Consignor: **Grassline Cattle Company**

UNION PACIFIC
EZ HOUDINI 22N
EZ MOLLY BROWN 66J

[ATHANLEE HERMAN
[BRAMBLETYPE TARA IV
[COMMANDER BLIGH
[BRAMBLETYPE Q131

EZ KENO 046K
EZ MISS PAMELA 9P
MISS PANMURE L362

[NEVADA N060
[TAINUI CARMEL P942
[BROKEN ARROW PANMURE
[TAINUI R962

This big, stout Riverwood Jane cow is out of EZ Pamela 9P, the dam of herdbulls RF Wilbur, now in the Nick Wells herd in Kansas, and RF Piston. She is bred to GLT Unique U02 FM8247.



EZ Miss Pamela 9P, dam of Lot 28

29 EZ TONA LEA T33

Color: **Black**

Tattoo: **EZT33**

ALR# **FF10227**

BD: **3/25/07**

Consignor: **Grassline Cattle Company**

BEAU LAD
EZ LISBON 29L
EZ OLIVIA 15G

[BEAU AARON M390
[GLEN INNES M343
[GOAN MESSMATE P012
[GLEN INNES E361

ADMIRAL J222
BRAMBLETYPE SANTA FE
BRAMBLETYPE TARA

[TRANGIE F249
[TRANGIE F037
[TRANGIE E087
[GLEN INNES E383

Her dam is a big bodied, powerfull direct import daughter of the foundation sire Admiral J222 and the great Tara J534 cow. She is bred to EZ Perfecto 48X FM12079.



Brambletype Santa Fe S192, dam of Lot 29

Grassline Cattle Co. Fullblood Females

30 EZ HADDIE 14T

Color: **Black**

Tattoo: **EZ14T**

ALR# **FF6603**

BD: **4/19/07**

Consignor: **Grassline Cattle Company**

UNION PACIFIC
EZ HOUDINI 22N
EZ MOLLY BROWN 66J

ADMIRAL J222
BROWNWYN 80H
BRAMBLETYE BRONWYN II

[ATHANLEE HERMAN
BRAMBLETYE TARA IV
COMMANDER BLIGH
BRAMBLETYE Q131

[TRANGIE F249
TRANGIE F037
TRANGIE J001
BRAMBLETYE BRONWYN J308

Haddie is out of a maternal sister to Utah. She is bred to GLT Unique U02 FM8247.



EZ Houdini 22N, sire of Lot 30 as a 6-year-old

31 BRR MISSY 411T

Color: **Black**

Tattoo: **BRR411T**

ALR# **FF7526**

BD: **12/2/07**

Consignor: **Grassline Cattle Company**

LB IKE 66K 115H
AA IKES FAVORITE
LB SHEBA 101L 98H

BJC LATIN LOVER 337L
BJC PRISSY 411P
BJC MOONSHINE 211M

[BRAMBLETYE BOSUN'S MATE
ALM GINNY 115H
QUARTERMASTER Q117
LVL LILIAN 98H

[BJC JACKSON 020J
BJC INNES 030H
BJC KAPTAIN 237K
C & C SUNSHINE 011K

The Latin Lover bull has sired some very maternal females. She is bred to EZ Perfecto 48X FM12079.

32 KNR NICOHLE

Color: **Black**

Tattoo: **KNR112T**

ALR# **FF7212**

BD: **12/9/07**

Consignor: **Grassline Cattle Company**

NEVADA N060
LTL DILLON
BAR J NELLIE 7G1

DUNEIRA RAPHAEL
MISS JETS RAPHAEL 258K
DUNEIRA RACHEL

[BRAMBLETYE BOSUN L006
GLEN INNES J389
NAVIGATOR N323
MUGGA ELLEN E315

[MUGGA MAJURA
GLEN INNES F326
ARDROSSAN PETER
TRANGIE J201

The first of two full sisters by the Denver Champion Dillon. She is bred to EZ Perfecto 48X FM12079.

33 TNT LADY LUCK

Color: **Black**

Tattoo: **TNT002U**

ALR# **FF8207**

BD: **5/16/08**

Consignor: **Grassline Cattle Company**

NEVADA N060
LTL DILLON
BAR J NELLIE 7G1

DUNEIRA RAPHAEL
MISS JETS RAPHAEL 258K
DUNEIRA RACHEL

[BRAMBLETYE BOSUN L006
GLEN INNES J389
NAVIGATOR N323
MUGGA ELLEN E315

[MUGGA MAJURA
GLEN INNES F326
ARDROSSAN PETER
TRANGIE J201

This Dillon daughter is only offered for sale because this is a mature cowherd dispersal. She produces the best calves! She is bred to GLT Unique U02 FM8247.



Lot 33 as a bred heifer

34 PCF ONEIDA 2W

Color: **Black**

Tattoo: **PCF2W**

ALR# **FF8509**

BD: **2/20/09**

Consignor: **Grassline Cattle Company**

MA BRENTON'S MACHISMO
PCF NAPOLEON
SUN CREEKS RUBY

NEVADA N060
EZ MISS OLIVE 38L
BRAMBLETYE THUNDER SONG

[ELIZA PARK BRENTON
BEAUMONT MATILDA
KNIGHTCRAWLER M432
GLENFIDDICH JACQUI

[BRAMBLETYE BOSUN L006
GLEN INNES J389
QUARTERMASTER Q117
BRAMBLETYE OLIVE II

Oneida has a strong Australian pedigree that traces to some dominant bloodlines in the breed namely Knightcrawler, Rouseabout, Nevada and the tremendous BR Olive II M053. She is bred to EZ Perfecto 48X FM12079.

35 KBW ARIEL

Color: **Black**

Tattoo: **7W**

ALR# **FF9464**

BD: **3/23/09**

Consignor: **Grassline Cattle Company**

KINTYRE DUNDEE
BCC DOC HOLLIDAY 04P
KINTYRE MELROE ABBEY

COLOMBO PARK ZEFFIRELLI
DOUBLE J'S MISS 28T
MISS JETS BRENTON 268K

[ROUSEABOUT M214
TRANGIE J303
BRAMBLETYE BOSUN III
TRANGIE K238

[APPERTARRA RANDY
COLOMBO PARK VIOLETTA
ELIZA PARK BRENTON
BURRA OPAL

This 6-year-old Doc Holiday daughter is bred for tremendous muscle and carcass characteristics. She is bred to EZ Perfecto 48X FM12079.

Grassline Cattle Co. Fullblood Females

36 RF WANDA

Color: **Black** Tattoo: **06W**
 Consignor: **Grassline Cattle Company**

ATHANLEE HERMAN
BRAMBLETYE TRANSAM
 BRAMBLETYE SEPTEMBER L503

BEAU LAD
BONANZA'S TESSY 702T
 BRAMBLETYE R177 RED SKY

[MUGGA MAJURA
 TRANGIE J325
 TRANGIE H322
 TRANGIE C201

[BEAU AARON M390
 GLEN INNES M343
 ADMIRAL FITZROY N065
 GLEN INNES M442

Bred Fullblood Cow

ALR# **FF9325** BD: **6/7/09**

These Trans Am daughters have above average size and performance with Beau Lad and Fitzroy on her bottom side to add style and muscle. She should have a great Perfecto calf. She is bred to EZ Perfecto 48X FM12079.

38 CRF BARBIE

Color: **Black** Tattoo: **CRF906W**
 Consignor: **Grassline Cattle Company**

THE CLAN MCGRITH
FAIRLAWN REBEL
 THE CLAN MCELLE

BEAU LAD
EZ LADY JANE 4L
 ITEN'S JAMIE 13G

[BROKEN ARROW KAPTAIN MIDNIGHT
 BELL BRAE BON BON
 THE CLAN MCCALLUM
 THE CLAN BRUCE MCBETHA

[BEAU AARON M390
 GLEN INNES M343
 NAVIGATOR N323
 BRAMBLETYE GERALDINE III

Bred Fullblood Cow

ALR# **FF11352** BD: **6/13/09**

A full sister to Lot 37, they are both maternal sisters to WMF Untouchable, 2011 American Royal Reserve Champion and a valued member of an elite herd at the University of Findlay. She is bred to GLT Unique U02 FM8247.

39 KBW MILLIE

Color: **Black** Tattoo: **13W**
 Consignor: **Grassline Cattle Company**

DCB HANK
KBW WILLY
 ALM GRACE 123H

LTL TELLURIDE
ASPEN'S MELODY
 LTL ASPEN

[MIDSHIPMAN M206
 BRAMBLETYE CRACKLIN' ROSIE
 ADMIRAL II L035
 BRAMBLETYE GERALDINE III

[ELIZA PARK BRENTON
 BR MINI MOUSE 002H
 BEAU LAD
 TNT DINKY DIE

Bred Fullblood Cow

ALR# **FF9470** BD: **7/13/09**

She is a granddaughter of Lone Tree's Beau Lad daughter Aspen who was successful in the show ring and as an embryo donor. She is bred to EZ Perfecto 48X FM12079.

41 ST PRINCESS

Color: **Black** Tattoo: **EZ19X**
 Consignor: **Grassline Cattle Company**

EZ MAGNUM 72J
EZ PISTOL 23P
 BRAMBLETYE T983

BEAU LAD
EZ ST. LUCY 31M
 BRAMBLETYE ST. LOUISE

[MIDSHIPMAN M206
 MUGGA MARNIE K L290
 NEVADA N060
 TAINUI ANNE

[BEAU AARON M390
 GLEN INNES M343
 ADMIRAL J222
 BRAMBLETYE AGNESS II

Bred Fullblood Cow

ALR# **FF10772** BD: **4/24/10**

Here is an awesome Pistol daughter out of one of the greatest cow families in the breed. She is bred to EZ Perfecto 48X FM12079.

37 CRF BAILELY

Color: **Black** Tattoo: **CRF905W**
 Consignor: **Grassline Cattle Company**

THE CLAN MCGRITH
FAIRLAWN REBEL
 THE CLAN MCELLE

BEAU LAD
EZ LADY JANE 4L
 ITEN'S JAMIE 13G

[BROKEN ARROW KAPTAIN MIDNIGHT
 BELL BRAE BON BON
 THE CLAN MCCALLUM
 THE CLAN BRUCE MCBETHA

[BEAU AARON M390
 GLEN INNES M343
 NAVIGATOR N323
 BRAMBLETYE GERALDINE III

Bred Fullblood Cow

ALR# **FF11351** BD: **6/8/09**

With the power of the big bodied Rebel on the top side and the maternal strength of Beau Lad and Lady Jane on her bottom side, she can do it all. She is bred to GLT Unique U02 FM8247.



Fairlawn Rebel, sire of Lots 37 and 38

40 DDR ZEFFAROO

Color: **Black** Tattoo: **DDR1X**
 Consignor: **Grassline Cattle Company**

ARDROSSAN NERON
ARDROSSAN JAMBEROO
 ARDROSSAN NARDIA

COLOMBO PARK ZEFFIRELLI
DDR ZEFFIE
 SPCR LADDIE R04

[BROKEN ARROW NERO
 ARDROSSAN DELVENE
 MINIKIN QUINTUS
 ARDROSSAN CARLA

[APPERTARRA RANDY
 COLOMBO PARK VIOLETTA
 BAR J BRENTON 1L 10
 SPCR LADDIE M02

Bred Fullblood Cow

ALR# **FF10847** BD: **4/15/10**

She has a pedigree laced with strong direct import genetics - Jamberoo and Zeffirelli - and bred to Perfecto has the potential for greatness. She is bred to EZ Perfecto 48X FM12079.



EZ Lola 15M, full sister to the dam of Lot 41

Grassline Cattle Co. Fullblood Females

42 EZ PERFECTION 41X

Color: **Black**

Tattoo: **EZ41X**

ALR# **FF12081**

BD: **2/20/10**

Consignor: **Grassline Cattle Company**

MUGGA MAJURA
ATHANLEE HERMAN
TRANGIE J325

[ADMIRAL J222
[TRANGIE J245
[TRANGIE F239
[TRANGIE E092

BRAMBLETYE THE BLOKE
BRAMBLETYE RISING SUN R153
BRAMBLETYE PERFECTION II H002

[COMMANDER II M045
[BRAMBLETYE PATIENCE II
[TRANGIE E004
[BRAMBLETYE PERFECTION 183

This straight topped, ultra feminine Herman daughter has that extended frame to stretch out your Lowline genetics. She is bred to GLT Unique U02 FM8247.



Lot 42 as a calf



Lot 44 as a calf

43 EZ RISING SUN 42X

Color: **Black**

Tattoo: **EZ42X**

ALR# **FF12075**

BD: **2/24/14**

Consignor: **Grassline Cattle Company**

MUGGA MAJURA
ATHANLEE HERMAN
TRANGIE J325

[ADMIRAL J222
[TRANGIE J245
[TRANGIE F239
[TRANGIE E092

BRAMBLETYE THE BLOKE
BRAMBLETYE RISING SUN R153
BRAMBLETYE PERFECTION II H002

[COMMANDER II M045
[BRAMBLETYE PATIENCE II
[TRANGIE E004
[BRAMBLETYE PERFECTION 183

This ultra fancy Herman daughter traces to one of the greatest foundation cows in the Brambletye herd, H002. She is bred to GLT Unique U02 FM8247.

44 EZ PERFECTION 43X

Color: **Black**

Tattoo: **EZ43X**

ALR# **FF12076**

BD: **3/1/10**

Consignor: **Grassline Cattle Company**

MUGGA MAJURA
ATHANLEE HERMAN
TRANGIE J325

[ADMIRAL J222
[TRANGIE J245
[TRANGIE F239
[TRANGIE E092

BRAMBLETYE THE BLOKE
BRAMBLETYE RISING SUN R153
BRAMBLETYE PERFECTION II H002

[COMMANDER II M045
[BRAMBLETYE PATIENCE II
[TRANGIE E004
[BRAMBLETYE PERFECTION 183

Another clean fronted Herman daughter out of the Australian donor R153 whose pedigree is loaded with maternal strength. She is bred to GLT Unique U02 FM8247.

45 EZ SILLOUETTE 44X

Color: **Black**

Tattoo: **EZ44X**

ALR# **FF12456**

BD: **3/1/10**

Consignor: **Grassline Cattle Company**

MUGGA MAJURA
ATHANLEE HERMAN
TRANGIE J325

[ADMIRAL J222
[TRANGIE J245
[TRANGIE F239
[TRANGIE E092

TRANGIE E004
BRAMBLETYE PERFECTION II H002
BRAMBLETYE PERFECTION F183

[TRANGIE C171
[TRANGIE C087
[TRANGIE D039
[TRANGIE Z075

This young Silhouette cow is an own daughter of Brambletye's most prolific and fertile donor cow, Perfection H002. Length and muscle are the hallmarks of these clean fronted Herman daughters. She is bred to GLT Unique U02 FM8247.

46 EZ SUNSHINE 46X

Color: **Black**

Tattoo: **EZ46X**

ALR# **FF12078**

BD: **3/1/10**

Consignor: **Grassline Cattle Company**

COMMANDER K162
COMMANDER BLIGH
BRAMBLETYE FELICITY J167

[TRANGIE H153
[TRANGIE F259
[TRANGIE F026
[TRANGIE Y189

ADMIRAL J222
BRAMBLETYE R177 RED SKY
GLEN INNES M442

[ADMIRAL J222
[BRAMBLETYE MADAME C208
[TRANGIE J078
[BRAMBLETYE MADAM C208

Udder quality and longevity are consistant among these heavy milking Commander Bligh daughters. She is bred to GLT Unique U02 FM8247.

47 DDR LISA LEE

Color: **Black**

Tattoo: **DDR10X**

ALR# **FF11970**

BD: **5/23/10**

Consignor: **Grassline Cattle Company**

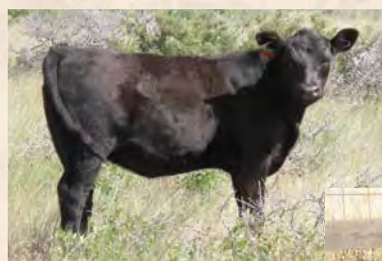
BEAU LAD
EZ LISBON 29L
EZ OLIVIA 15G

[BEAU AARON M390
[GLEN INNES M343
[GOAN MESSMATE P012
[GLEN INNES E361

EZ LEXUS 18L
EZ LEXIE LEE 46R
MUGGA LEE 9L

[NEVADA N060
[BRAMBLETYE ST. LOUISE
[UNION PACIFIC
[ALM MID MUGGA 05J

Holy cow! Look at the cows in this cow's pedigree! She is stacked with some of the highest earning cows in the breed. She is bred to GLT Unique U02 FM8247.



Lot 45 as a calf



Lot 46 as a calf

Grassline Cattle Co. Fullblood Females

48 AUSMERICA YARRA Y014

Color: **Black**

Tattoo: **Y014**

ALR# **FF15036**

BD: **1/3/11**

Consignor: **Grassline Cattle Company**

AVONSLEIGH JULIUS
ARDROSSAN LINCOLN
KIMBOLTON HARMONY

ARDROSSAN RICHMOND
ARDROSSAN TUTU
CAUSARINA BECKY

[CAUSARINA SAMSON M354
CAUSARINA BROOKE
TRANGIE J037
KIMBOLTON MIRACLE

[COMMODORE III
TRANGIE K058
TRANGIE K121
CAUSARINA ADELINE L223

Sired by the 47", 1547# Lincoln with some of Ardrossan's best breeding on her bottom side. She is bred to EZ Perfecto 48X FM12079.



Ardrossan Tutu, dam of Lot 48

49 GRASSLINE NARDIA 53Z

Color: **Black**

Tattoo: **53Z**

ALR# **Pending**

BD: **3/18/12**

Consignor: **Grassline Cattle Company**

BROKEN ARROW NERO
ARDROSSAN NERON
ARDROSSAN DELVENE

MINIKIN QUINTUS
ARDROSSAN NARDIA
ARDROSSAN CARLA

[TRANGIE K121
BROKEN ARROW OPAL NERA
MINIKIN QUINTUS
GLEN INNES E367

[TRANGIE J307
TRANGIE L232
BRAMBLETYE JAMES BOND L007
GLEN INNES J330

A full sister to the great Jamberoo. Her granddam Carla is one of the best looking cows in the breed. She is bred to EZ Torch 23T FM 6319.



Ardrossan Nardia, dam of Lot 49

50 GRASSLINE LUCKY 55Z

Color: **Black**

Tattoo: **55Z**

ALR# **Pending**

BD: **3/28/12**

Consignor: **Grassline Cattle Company**

COLOMBO PARK TANNHAUSER
YARRA RANGES JACKAROO
MONTE ALLEGRO ZELMA

EZ MAGNUM 72J
EZ LADY LUCK 51N
LUCKY 7

[THE GLEBE WOODSTOCK
AVONSLEIGH JEWEL
MONTE ALLEGRO DA VINCI
TERREBONNE VICTORIA

[MIDSHIPMAN M206
MUGGA MARNIE K L290
ADMIRAL J222
BRAMBLETYE AMICABLE J152

Here is an ET heifer out of the Reserve National Champion Lady Luck by the Australian National Champion Jackaroo who has sired numerous American champions. She is bred to EZ Torch 23T FM 6319.



EZ Lady Luck 51N, dam of Lots 50 and 51

51 GRASSLINE LUCKY 52Z

Color: **Black**

Tattoo: **52Z**

ALR# **Pending**

BD: **3/30/12**

Consignor: **Grassline Cattle Company**

BEAU AARON M390
BEAU LAD
GLEN INNES M343

EZ MAGNUM 72J
EZ LADY LUCK 51N
LUCKY 7

[TRANGIE SALT BUSH K208
TRANGIE E120
TRANGIE J142
GLEN INNES E307

[MIDSHIPMAN M206
MUGGA MARNIE K L290
ADMIRAL J222
BRAMBLETYE AMICABLE J152

Here is an exciting daughter of the now deceased Beau Lad and the 2006 Reserve National Champion Female. Exciting genetics bred to Torch. She is bred to EZ Torch 23T FM 6319.



Beau Lad, sire of Lot 51

Grassline Cattle Co. Females

52 GRASSLINE LISA LEE 56Z

Color: **Black** Tattoo: **56Z**

ALR# **Pending** BD: **4/3/12**

Consignor: **Grassline Cattle Company**

ZEUS SCR 47J
ALTA WILD CARD BIL 14T
ALTA MAY BIL 14K

EZ LISBON 29L
DDR LISA LEE
EZ LEXIE LEE 46R

[ROUSEABOUT M214
[GLENFIDDICH AMY Q003
[KOTINGA ROCKY
[KOTINGA GINGER

[BEAU LAD
[EZ OLIVIA 15G
[EZ LEXUS 18L
[MUGGA LEE 9L

Here is a sister to the 2011 National Champion Percentage Heifer, shown by Claire Lyons of Colorado and sired by Wild Card. She is bred to EZ Torch 23T FM 6319.



Xquisite, paternal sister to Lot 52

53 GRASSLINE LOUISA 21Z

Color: **Black** Tattoo: **21Z**

ALR# **Pending** BD: **5/4/12**

Consignor: **Grassline Cattle Company**

AVONSLEIGH JULIUS
GTL UNIQUE U02
ARDROSSAN DELVENE

NEVADA N060
ALM LOUISA 13L
BRAMBLETYPE ST. LOUISE

[CAUSARINA SAMSON M354
[CAUSARINA BROOKE
[MINIKIN QUINTUS
[GLEN INNES E367

[BRAMBLETYPE BOSUN L006
[GLEN INNES J389
[ADMIRAL J222
[BRAMBLETYPE AGNESS II

St. Louise S208 genetics on the bottom side strengthen this pedigree as much as the Nevada breeding and the Australian Unique pedigree of her sire. She is bred to EZ Torch 23T FM 6319.



Brambletype St. Louise S208, granddam of Lot 53

54 GRASSLINE RAPHAEL 26Z

Color: **Black** Tattoo: **26Z**

ALR# **Pending** BD: **5/7/12**

Consignor: **Grassline Cattle Company**

AVONSLEIGH JULIUS
GTL UNIQUE U02
ARDROSSAN DELVENE

DUNEIRA RAPHAEL
MISS JET'S RAPHAEL 274K
DUNEIRA RACHEL

[CAUSARINA SAMSON M354
[CAUSARINA BROOKE
[MINIKIN QUINTUS
[GLEN INNES E367

[MUGGA MAJURA
[GLEN INNES F326
[ARDROSSAN PETER
[TRANGIE J201

The Australian Duneira herd has been underestimated with its influence in the superior genetics imported to the US. If you study the pedigrees, the Duneira cattle have made their mark. She is bred to EZ Torch 23T FM 6319.

55 GRASSLINE NICOHLE 27Z

Color: **Black** Tattoo: **27Z**

ALR# **Pending** BD: **5/7/12**

Consignor: **Grassline Cattle Company**

AVONSLEIGH JULIUS
GTL UNIQUE U02
ARDROSSAN DELVENE

LTL DILLON
KNR NICOHLE
MISS JET'S RAPHAEL 258K

[CAUSARINA SAMSON M354
[CAUSARINA BROOKE
[MINIKIN QUINTUS
[GLEN INNES E367

[NEVADA N060
[BAR J NELLIE 7G1
[DUNEIRA RAPHAEL
[DUNEIRA RACHEL

This Unique heifer's mother is a full sib to our top donor cow by Dillon that sells as Lot 33. She is bred to EZ Torch 23T FM 6319.



EZ Champ 34T, sire of Lot 56

56 VAL CHICA 719Y

Color: **Black** Tattoo: **VAL01719Y** ALR# **PF14564** BD: **3/13/11**

Consignor: **Grassline Cattle Company**

LITTLE JOE 305R
EZ CHAMP 34T
EZ MAGGIE 33P

LITTLE JOE 305R
EZ ABILENE 307T
EZ MISS SHERMAN 150R

[BONANZA'S BRENTON 02L
[BONANZA'S SARA 200M
[EZ MAGNUM 72J
[EZ MISS PANMURE L357

[BONANZA'S BRENTON 02L
[BONANZA'S SARA 200M
[EZ SHERMAN 24J
[EZ TL DAM

Little Joe, the 2006 National Champion, also sired the 2014 National Western Champion Pen of Commercial Heifers, over all breeds. She is line bred to Little Joe and bred to Perfecto. She is bred to EZ Perfecto 48X FM12079.



Notes

[illegible]



Auction Effertz, Ltd.

Your Market Masters

NEIL & JAN EFFERTZ

effertz@bektel.com • Cell: 701-471-0153

17350 Hwy. 1804 N. • Bismarck, ND 58503

Ph: 701-223-5202 • Fax: 701-223-5458

www.auctioneffertz.com

PRESORTED
FIRST-CLASS MAIL
U.S. POSTAGE PAID
LivestockDirect.net
PERMIT NO. 29

Two Lowline Dispersals

Danilson Farms

Complete Lowline Dispersal

Grassline Cattle Co.

Mature Fullblood Cowherd Dispersal



Tuesday, February 10, 2015

6 p.m. • Colfax Livestock • Colfax, Iowa

Offering 56 Lots
Of Superb Lowline Genetics