

11th Annual
National

LOWLINE Sale

Tuesday, January 18, 2011 • 1:00 p.m. MST
National Western Stock Show • Denver, Colorado



Lot 4 ~ This daughter of champions is safe in calf to Jackaroo, the two-time Australian Champion



This Iowa Champion sells as Lot 5



This Apollo son, selling as lot 33, is an out-cross to most American genetics.



This double bred Bluey is bred similar to the 2010 high selling heifer. She sells as Lot 24.

North America's
Elite Lowline
Genetics!!

Featuring:

- Bred & Open Fullblood Females
- Purebred & Percentage Females
- Elite Herd Bull Prospects
- Many Youth Show Heifer Prospects
- Embryo Packages
- Black & Red Genetics

Selling over
70 Lots!!



11th Annual
National

LOWLINE Sale

Tuesday, January 18, 2011 • 1:00 p.m. (MT)

Livestock Center Auction Arena

National Western Stock Show ~ Denver, Colorado

Auctioneers:



Neil Effertz, Bismarck, ND
701/223-5202

John Reed, Brooten, MN
320/346-2750

Sale Day Phone: After January 8th, you can reach John Reed at 320/808-1938 or Neil Effertz at 701/471-0153

Sales Staff:

Jim GiesWestern Livestock Journal
Phone: 970/454-3836 or Cell: 970/590-0500
Randy RasbyLivestock Plus
Phone: 308/386-4857 or Cell: 308/539-6195
Dean PikeAmerican Lowline Registry
Phone: 303/810-7605

TRUCKING: Lathrop Livestock Transportation has an office in the Livestock Sales Arena in the yards during the stock show and has trucks going many directions during the National Western. Their office phone is 847/426-5009.

INSURANCE: Livestock insurance will be available sale day.

ABSENTEE BUYERS: If you are unable to attend the sale and are interested in purchasing cattle, please contact the auctioneers, sales staff or consignors. Assistance will be made with trucking arrangements.

ANNOUNCEMENTS: Any and all announcements from the block on sale day will take precedence over statements in the sale catalog. The American Lowline Registry, auctioneers or sales staff act as marketing agents only and take no responsibility for the representation of the cattle or pedigrees. Any guarantees, implied or otherwise, are between buyer and seller.

CAN'T ATTEND THE SALE?

BID LIVE, ONLINE AT: LiveAuctions.tv

Real-time bidding is available via the internet for this National Lowline Sale. Live audio and live video will allow buyers to bid on animals just as if they were present at the sale. Please visit www.liveauctions.tv to create an account and request a buyer number. Instructions are available to walk you through the account setup process.

Buyers who would like to bid via the Internet must register with LiveAuctions.tv at least two days prior to the sale. For any questions, contact sale management or e-mail: brad@LiveAuctions.tv. The sale management will arrange trucking for your purchases anywhere in the United States.



CATALOG PRODUCED BY:
Ravellette Publications, Inc.
221 E. Oak St., Philip, SD 57567
(605) 859-2516 • e-mail: ads@pioneer-review.com
Website: www.rpipromotions.com

SCHEDULE OF EVENTS:

MONDAY, JANUARY 17, 2011

- 10:00 a.m. All Lowline cattle in place
12:00 Noon Process bulls and check tattoos on all cattle - NWSS
7:00 p.m. Annual banquet followed by the American Lowline Junior Association Auction. The banquet will be a buffet-style meal for ALR members and their guests. Tickets should be bought in advance. There will be a DJ, so bring your dancing shoes. Held at the Embassy Suites Hotel.

TUESDAY, JANUARY 18, 2011

- 10:00 a.m. National Lowline People's Choice Show - NWSS - SYA Building
1:00 p.m. National Lowline Sale - NWSS - LCAA Building

WEDNESDAY, JANUARY 19, 2011

- 8:00 a.m. Lowline Junior Heifer Show/Showmanship - NWSS - SYA Building
10:00 a.m. National Lowline Female Show (Fullblood and Percentage) - NWSS - SYA Building
7:00 p.m. American Lowline Registry Annual Membership Meeting followed by Breeder's Reception - Embassy Suites Hotel

THURSDAY, JANUARY 20, 2011

- 9:00 a.m. National Lowline Pen Bull Show - NWSS - SYA Building
10:00 a.m. National Lowline Bull Show (Fullblood and Percentage) - NWSS - SYA Building

Please check the website at: WWW.USA-LOWLINE.ORG for updates

Sale Sponsored by:



19590 East Main St #20
Parker, CO 80138
info@usa-lowline.org
303/840-4343

Headquarters Hotel for National Western: Embassy Suites Hotel, Denver/Aurora

444 N. Havana St. • Denver, CO 80239 • Phone: 303/375-0400 • FAX: 303/373-9236

We have blocked a number of rooms for ALR members at a rate of \$112.00 per night.

Rooms are booked for Saturday, January 15, through Thursday, January 20, 2011.

Book your rooms early. Make sure to tell them you are with the American Lowline Registry. If there are any problems, call Rick Dodd at (206) 459-3778 or e-mail: toplinelowlines@earthlink.net.

The Embassy Suites features a free breakfast buffet and a happy hour every evening with discount drinks and free finger food. These are included with your room.



MCR Bearmesa

This is a classy young heifer by MCR Standing Bear and out of a Tequila daughter. Bearmesa combines style, power and performance. Her ultrasound data showed a 7.6 REA, 2.02 REA/CWT, and a 3.5 IMF. This heifer is entered in the NWSS Show. You could win the raffle and have the champion heifer the next day!!

Thank you to Muddy Creek Ranch for donating this heifer!

ALJA Fundraiser

Here's your chance to win this \$10,000 Fullblood Heifer!!

This Fullblood Lowline heifer, donated by Muddy Creek Ranch, is a striking young female and is out of MCR's powerful herd sire, MCR Standing Bear. Don't miss your chance to own a heifer of this magnitude! She was born March 26, 2010, and birth weight was 59 lbs.

HOW THE AUCTION WILL WORK:

Only once chance out of 300 will win this heifer!

The ALJA (American Lowline Junior Association) is selling 300 raffle tickets; 250 of these tickets will be sold via Internet at www.usa-lowline.org and can be purchased with a credit card at \$50.00 apiece. This junior raffle heifer is STANDING her ground. So, if you miss your chance at purchasing your ticket via the Internet, then tickets for MCR Bearmesa will be available for auction at the National Lowline Sale in Denver on January 18, 2011, at 1:00 p.m. Only 50 tickets will be auctioned off to you during the sale and this will be your last chance to win the heifer. The heifer raffle will begin the auction and the drawing of the winning ticket will be held at the conclusion of the sale. The winner does not need to be present to win. All proceeds go to the ALJA. If you have any questions, please contact an ALJA board member, listed below. **MUDDY CREEK RANCH CAN BRING THE HEIFER BACK TO THEIR RANCH UNTIL FURTHER ARRANGEMENTS CAN BE MADE BY THE BUYER.**

ATTENTION: Other donations are always welcome! The Iowa Junior National was a HIT! Now please help us make the Junior National Show in LARAMIE, WY, EVEN BETTER! The show will be held June 22-25, 2011, in Laramie at the University of Wyoming.

On behalf of the ALJA, we are looking forward to next year's show!

So remember to SPREAD THE WORD!

American Lowline Junior Association

For more information about the fundraiser, please contact: Beverly Shirts: (Cell) 208-691-4945; e-mail: whitehorselowlines@gmail.com
Ashley Mugnier - e-mail: amugien90@hotmail.com

FULLBLOOD BRED FEMALES

1

EBC Dillon 707T

BD: 2-7-07 Fullblood Cow
 Reg.: FF 6113 Tattoo: EBC707T
 BW: 48 Adj. WW:
 Consignor: Schmit Farms



{NEVADA N060
LTL DILLON
 FM 1884 {BAR J NELLIE 7G1

{ELIZA PARK BRENTON N001
WILDE'S MORAY 01
 FF 1654 {MUGGA MORAY MLS M008

{BRAMBLETYE BOSUN L006
 {GLEN INNES J389
 {GLENN INNES N323 NAVIGAT
 {MUGGA ELLEN E315
 {BRAMBLETYE BOSUN L006
 {GI J369 BRAMBLETYE SUZAN
 {BRAMBLETYE ADMIRAL TRA J
 {TRANGIE J201

✓ *This good sized, well balanced female is a great donor prospect. She produced double digit egg numbers on her only flush. Bred 6/29/10 to Findon Royal and cleaned up with Branded Red.*

2

Miss Double J 212 T

BD: 4-3-07 Fullblood Cow
 Reg.: FF 5857 Tattoo: 212T JJC
 BW: 42 Adj. WW:
 Consignor: Schmit Farms



{SANTA FE MAXIMILLION
VITULUS YES YES YES
 AULM4935 {WYZENBEEF LADY WARATAH

{ELIZA PARK BRENTON N001
MISS JET'S BRENTON 268K
 FF 674 {BURRA OPAL

{TRANGIE L204
 {GLEN INNES N386
 {THE GLEBE WOODSTOCK
 {WYZENBEEF LADY CALYPSO
 {BRAMBLETYE BOSUN L006
 {GI J368 BRAMBLETYE SUZAN
 {BRAMBLETYE WARREGO
 {TRANGIE J304

✓ *This productive cow was bred to Muddy Creek's Ulysses bull on 6/29/10 and cleaned up with Branded Red. She is a donor cow prospect.*

3

MAC Prima 809U

BD: 4-8-08 Fullblood Cow/Calf
 Reg.: FF 7852 Tattoo: 809U
 BW: 61 Adj. WW: 425
 Consignor: Macdonell Lowlines



{BRACKENGRAE BEAU LAD
LTL DURANGO
 FM 2840 {BAR J NELL OK4

{BROKEN ARROW KAPTAIN MID
ARDROSSAN GLENARA
 FF 4927 {BROKEN ARROW OPAL NERA

{TRANGIE M390 BEAU AARON
 {GLEN INNES M343
 {NEVADA N060
 {BAR J NELL 7G2
 {TRANGIE M432 KNIGHT CRAW
 {GLEN INNES N308
 {TRANGIE M249
 {TRANGIE M235

✓ *This outstanding Durango daughter is no stranger to Denver, standing 4th in her class in 2010. She's safe in calf to Ardrossan Jamberoo, that will improve your herds Genestar rating.*



Vitulus Yes Yes Yes – Sire of Lot 2

4

EZ Satin 60U

BD: 9-1-08 Fullblood Bred Heifer
 Reg.: FF 8525 Tattoo: 60U
 BW: 48 Adj. WW:
 Consignor: Karl Effertz



{BEAU LAD
EZ LISBON 29L
 FM1756 {EZ OLIVIA 15G

{EZ MAGNUM 72J
EZ LADY LUCK 51N
 FF 2219 {LUCKY 7

{BEAU AARON
 {GLEN INNES M343
 {MESSMATE P012
 {MUGGA ESTHER E361
 {MIDSHIPMAN M206
 {MUGGA MARNIE L290
 {ADMIRAL J222
 {BRAMBLETYE AMICABLE J152

✓ *She was AI bred to Jackaroo on June 9 and is safe to the AI date, due to calve March 9, 2011. Satin is a full sister to EZ Lacey 55T, the 2008 Iowa State Fair champion female and the 2009 Houston champion female. Their dam, EZ Lady Luck 51N, was the 2004 American Royal champion female and the reserve national champion in Denver in 2005. Consider the value of Satin's royally bred calf by Jackaroo, the Sydney and Melbourne champion. She is a bona fide donor cow prospect.*



4

FULLBLOOD BRED FEMALES



5

LLB Mac Shine

BD: 2-19-09 Fullblood Bred Heifer
 Reg.: FF 8968 Tattoo: LLBW19
 BW: 48 Adj. WW:
 Consignor: Lakeville Lowline Breeders



MAC
 FM 2607

| | |
|---------------------------|----------------------------|
| {FAIRWYN'S MACHINE | {BRAMBLETYE TEQUILA |
| {LCM VALENTINE 1K | {BRAMB. FAIRWYN'S NATESA |
| | {BRAMB. Q117 QUARTERMASTER |
| | {BRAMBLETYE Q131 |
| {BRAMBLETYE TEQUILA | {ATHANLEE HERMAN |
| BAR J NELLIE OK5-5R7 | {GLEN INNES |
| FF 3500 {BAR J NELLIE OK5 | {NEVADA N060 |
| | {BAR J NELLIE 7G1 |

✓ Iowa 2009 division champ. Sire by Mac (Fairwyn's Machine & LCM Valentine). Dam - Bar J Nellie OK5-5R7, say what you want. Bred to SC Shane, a Houston grand champion. Mac Shine can be your next herd cow!



6

MCR Findon's Montana Queen

BD: 3-6-09 Fullblood Bred Heifer
 Reg.: FF 8709 Tattoo: W908 MCR
 BW: 58 Adj. WW:
 Consignor: Muddy Creek Ranch



WANAMARA FINDON ROYALE
 FM7445

| | |
|--------------------------|------------------------------|
| {ARDROSSAN FINDON | {ARDROSSAN RICHMOND |
| {KIMBOLTON DAPHNE | {ARDROSSAN CARLA |
| | {WANAMARA VANDER-KUYP |
| | {KIMBOLTON COSMOS |
| {EZ MAGNUM 72J | {TRA M206 MIDSHIPMAN |
| EZ CLARISSA 29N | {MUGGA MARNIE K L290 |
| FF 2455 {BRONWYN LRL 80H | {BRAMBLETYE ADMIRAL TRA J222 |
| | {BRAMBLETYE BRONWYN II |

✓ Stop! Look no further, this is the cow to build your donor program around. She is out of MCR's high producing donor cow, EZ Clarissa 29N, and by the most uniformed producing bull in the USA, Findon Royale. She doesn't only have the great genetics, she's carrying great genetics. She will have one of the first calves out of MCR Crazy Train, 2010 grand champion bull at the NILE Montana and NAILE Louisville, KY. Check out his pedigree and you'll know why she's a once in a life time investment. MCR will reserve the right to a flush.

7

Alta Louisa-Mae BIL 5W

BD: 5-11-09 Fullblood Bred Heifer
 Reg.: CAN 463 Tattoo: BIL 5W
 BW: 46 Adj. WW:
 Consignor: Big Island Lowlines



{ARDROSSAN NERON
 ARDROSSAN JAMBEROO
 {ARDROSSAN NARDIA

{BROKEN ARROW NERO
 {ARDROSSAN DELVENE
 {MINIKIN QUINTUS
 {ARDROSSAN CARLA
 {BRAMBLETYE CAPTAIN III
 {BRAMBLETYE ELATION II
 {BRAMBLETYE ADMIRAL II
 {TRANGIE J152

{KOTINGA ROCKY
 ALTA LOUISE BIL 5K
 CAN 79 {KOTINGA SHEBA

✓ Since Big Island has been coming to Denver, we have brought and sold our best yearling heifers and we're doing it again. Mark Gillis bought last year's and she is now in his embryo program. Muddy Creek Ranch purchased our bred Canadian junior champion 2 years prior and her heifer calf, We Be Jammin, was grand champion fullblood heifer at the Iowa 2010 Lowline Junior National. Alta Louisa-Mae is a Jamberoo daughter and half sister to Muddy Creek's heifer. She was junior champion at the Canadian National and she is very correct. One of her maternal sisters was a high seller at Denver 3 years ago. Another sister was grand champion at the Canadian National 2 years ago and her younger sister is now in quarantine to go to England. Alta Louisa-Mae was AI'd to Bonanza's Toby 704T, the 2009 Canadian National grand champion bull on Sept. 15 with no exposure. Alta Louisa-Mae was born in a brucellosis free country and therefore could not be calf hood vaccinated. Please check with your state requirements.



FULLBLOOD BRED FEMALES

8

Alta Maya BIL 114W

BD: 5-24-09 Fullblood Bred Heifer
 Reg.: CAN 455 Tattoo: BIL 114W
 BW: 50 Adj. WW:
 Consignor: Big Island Lowlines



{VITULUS Y-R
 VITULUS AWESOME RED
 FM 4180 {GOAN BLACK OPAL 5

{GOAN MACQUARIE II
 {GOAN JEWEL LADY
 {GOAN KURRAJONG
 {GOAN BLACK OPAL
 {TRANGIE M214
 {GLENFIDDICH AMY 1090
 {KOTINGA ROCKY
 {KOTINGA GINGER

{ZEUS SCR 47J
 ALTA MADDIE BIL 14N
 CAN 111 {ALTA MAY BIL 14K

✓ When Big Island started adding red genetics, we added to our best black cows. Alta Wild Card sired several class winners at the Iowa Junior show last spring and it's his full sister that is Alta Maya BIL 114W's mother. Alta Maya's grandmother was our first national champion female and is possibly still one of our best cows. Alta Maya is a big, broody, powerful heifer with lots of rib. She is sired by Awesome Red and AI'd to Bluey, so there is a 50% chance of getting a red calf that still has some of the best black genetics around. Alta Maya's half sister won reserve senior champion and reserve grand champion female at this year's Canadian National. Another Awesome Red sister was reserve junior champion at the IPE show and at the Canadian National this year. Alta Maya was AI'd to Bluey, Oct. 18 with no exposure. Alta Maya was born in a brucellosis free country and therefore could not be calf hood vaccinated. Please check your state requirements.

9

DDR WIN

BD: 6-14-09 Fullblood Open Heifer
 Reg.: FF 8854 Tattoo: DDR10W
 BW: 44 Adj. WW:
 Consignor: Double D Ranch



{FAIRWYN'S MACHINE
 MAC
 FM 2607 {LCM VALENTINE 1K

{BRAMBLETYE TEQUILA
 {BRAMB. FAIRWYN'S NATESA
 {BAMB.Q117 QUARTERMASTER
 {BRAMBLETYE Q131
 {BROKEN ARROW KAPTAIN MIDNIGHT
 {TRANGIE K004
 {TRANGIE K085
 {TRANGIE J290

{BROKEN ARROW PANMURE
 BRAMBLETYE MAID MARION
 FF 2178 {LONGBOW MAID MARION

✓ One of our favorites. She is open and will fit your breeding season, spring or fall. You will like the quality of the Mac daughters.



10

BDL Untouchable WE10

BD: 6-16-09 Fullblood Bred Heifer
 Reg.: FF 11607 Tattoo: BDLWE10
 BW: 39 Adj. WW:
 Consignor: B&D Lowlines



{BRAMBLETYE TEQUILA
 BAR J CUERVO 2M 35
 FM 1728 {BAR J NELL 7G2-0K45

{ATHANLEE HERMAN
 {GLEN INNES J306
 {BRAMBLETYE COMMANDER II
 M045
 {BAR J NELL 7G2
 {BRACKENGRÆ BEAU LAD
 {BRAMBLETYE Q124
 {BRAMBLETYE COMMANDER BLIGH
 {EZ MATILDA 06G

{BAY LADD
 LLB-LVB-P21
 FF 2562 {LVR 21J

✓ Pasture exposed to Spring Creek Uriah from July 1 - December 1, 2010. Spring Creek Uriah is a full brother to Ulysses and Ultramay. Her sire was the 2004 international champion in Denver. This should be an excellent mating.

11

KBW Millie

BD: 7-13-09 Fullblood Open Heifer
 Reg.: FF 9470 Tattoo: 13W
 BW: Adj. WW:
 Consignor: K Bar W Ranches, LLC



{DCB HANK
 KBW WILLY
 FM 5793 {ALM GRACE 123H

{TRA M206 MIDSHIPMAN
 {BRAMBLETYE CRACKLIN ROSIE
 {BRAMBLETYE ADMIRAL II L035
 {BRAMBLETYE GERALDINE II N071
 {ELIZA PARK BRENTON N001
 {BR MINI MOUSE 002H
 {BRACKENGRÆ BEAU LAD
 {TNT DINKY DIE

{LTL TELLURIDE
 ASPEN'S MELDOY
 FF 2280 {LTL ASPEN

✓ KBW Millie is a super complete class winner at the 2010 American Royal. She's thick made with a classy, clean front end. Millie's dam, Aspen's Melody, has produced several herd sires and an \$8,000 female at the 2010 Get Back to Grass Sale in Athens, TX.

FULLBLOOD OPEN FEMALES



12

KBW Molly

BD: 9-27-09 Fullblood Open Heifer
 Reg.: FF 11988 Tattoo: 14W
 BW: Adj. WW:
 Consignor: K Bar W Ranches, LLC



| | |
|--------------------------------|----------------------------|
| {KINTYRE DUNDEE KLC003 | {TRANGIE M214 ROUSEABOUT |
| BCC DOC HOLLIDAY | {TRANGIE J303 |
| FM 2117 {KINTYRE MELROSE ABBEY | {AULN 061 |
| | {TRANGIE K238 |
| | {TRA M206 MIDSHIPMAN |
| {DCB HANK | {BRAMBLETYE CRACKLIN ROSIE |
| KBW KEELAH'S MARIA | {BRAMBLETYE TEQUILA |
| FF 5795 {PC TEQUILLA SUNRISE | {FLORENCE |

✓ *KBW Molly is a powerful, yet feminine Doc Holliday daughter with muscle and bone to spare. Doc Holliday sired many of the calf champions at the 2010 NAILE, winning get-of-sire as well. Molly's dam, Maria, is a young standout donor that does everything right.*



13

Sunset Vicky 919W

BD: 9-29-09 Fullblood Bred Heifer
 Reg.: FF 10330 Tattoo: 919W
 BW: Adj. WW:
 Consignor: Sigel Sunset Ranch



| | |
|----------------------------|------------------------------|
| {BRAMBLETYE TEQUILA | {ATHANLEE HERMAN |
| BAR J TEQUILA 6S39 | {GLEN INNES |
| FM 6131 {01L | {RAD PILGRIM 01H |
| | {RAD ELLIE 01G |
| | {BRAMBLETYE ADMIRAL TRA J222 |
| {ALM WRANGLER 44H | {BRAMBLETYE LITTLE ONE J223 |
| SC VICTORIA S11 12J | {TRA M206 MIDSHIPMAN |
| FF 4353 {ALM DOT 12J | {MUGGA MARNIE K L290 |

✓ *Her dam was the 2008 international champion in Denver. A full sister was division champion at the junior nationals. Her full brother was calf champion at the Iowa State Fair and reserve grand champion at the 2010 World Beef Expo. Here is a female with a lot of future.*



14

KBW Finesse

BD: 11-4-09 Fullblood Open Heifer
 Reg.: FF 11991 Tattoo: 21W
 BW: Adj. WW:
 Consignor: K Bar W Ranches, LLC



| | |
|--------------------------------|------------------------------|
| {BRACKENGRAE BEAU LAD | {TRANGIE M390 BEAU AARON |
| EZ LISBON 29L | {GLENN INNES M343 |
| FM 1756 {EZ OLIVIA 15G | {GOAN MESSMATE P012 |
| | {GLENN INNES E361 |
| | {BRAMBLETYE ADMIRAL TRA J222 |
| {BRAMBLETYE ADMIRAL II | {GLENN INNES GERALDINE J358 |
| ALM GRACE 123H | {BRAMBLETYE ADMIRAL TRA J222 |
| FF 25 {BRAMBLETYE GERALDINE II | {GLENN INNES GERALDINE J358 |

✓ *KBW Finesse is an extra fancy daughter of the 19.62 REA carcass bull, EZ Lisbon 29L. Clean, correct phenotype with plenty of length. Finesse's dam, Grace, is an excellent mother as well as one of our most prolific donors.*

OPEN FULLBLOOD FEMALES

15

BD: 3-9-10
Reg.:
BW: 39
Consignor: Little Black Angus Ranch

LBA X3

Fullblood Open Heifer
Tattoo: ROAX3
Adj. WW:



| | |
|----------------------------------|---------------------------|
| {COLOMBO PARK ZEFFIRELLI | {APPERTARRA RANDY |
| DOUBLE J'S MR 107T | {COLOMBO PARK VIOLETTA |
| FM 5850 {MS JET'S BRENTON 286K | {ELIZA PARK BRENTON N001 |
| | {DUNEIRA QUARTILLAH DPC Q |
| | {ELIZA PARK BRENTON N001 |
| {MR ROCKING BRENTON 270K | {GLEN INNES N331 |
| DJR'S MS SWEETNESS | {BAR J PONDEROSA OK13 |
| FF 4297 {BAR J MIRACLE 7G9 2M 42 | {BAR J MIRACLE 7G9 |

✓ *She is long and correct and would be a fine show prospect and brood cow.*



16

BD: 3-12-10
Reg.:
BW: 43
Consignor: Little Black Angus Ranch

Dakota Queen

Fullblood Open Heifer
Tattoo: ROAX5
Adj. WW:



| | |
|--------------------------------|---------------------------|
| {COLOMBO PARK ZEFFIRELLI | {APPERTARRA RANDY |
| DOUBLE J'S MR 107T | {COLOMBO PARK VIOLETTA |
| FM 5850 {MS JET'S BRENTON 286K | {ELIZA PARK BRENTON N001 |
| | {DUNEIRA QUARTILLAH DPC Q |
| | {BRAMBLETYE BOSUN L006 |
| {NEVADA N060 | {GLEN INNES J389 |
| WALTZING MATILDA 21L | {GLENN INNES N323 NAVIGAT |
| FF 2716 {EZ MATILDA 06G | {MUGGA ELLEN E315 |

✓ *She has plenty of rear view to complement her good front and fancy style. Don't miss her!*



17

BD: 3-12-10
Reg.: 11953
BW:
Consignor: Cheyenne Outlaw, LLC

Outlaw's Bonnie

Fullblood Open Heifer
Tattoo: COW 41X
Adj. WW:



| | |
|--------------------------------|---------------------------|
| {COLOMBO PARK ZEFFIRELLI | {APPERTARRA RANDY |
| OUTLAW | {COLOMBO PARK VIOLETTA |
| FM 5996 {VAL | {BRAMB.Q117 QUARTERMASTER |
| | {SK231 |
| | {BCR ALEX'S ADMIRAL LG07 |
| {RML BLACK ICE NG03 | {BCR DIANA LE03 |
| RML SHIRAZ | {NEVADA N060 |
| FF 4255 {AMERICAN STANDARD 24L | {EZ MATILDA 06G |

✓ *The sire is a son of Australian grand champion, and was Laramie County (Cheyenne) Lowline grand champion three years in a row (2007-2009) and champion senior bull Montana 2009. Dam is also of good, sound quality with champion lines. Calf prepared and presented by Laramie County Community College (Cheyenne) and part of sale proceeds to benefit this outstanding youth organization.*

18

BD: 3-18-10
Reg.: FF 11091
BW:
Consignor: Muddy Creek Ranch

MCR Bear Necessities

Fullblood Open Heifer
Tattoo: X19 MCR
Adj. WW:



| | |
|---------------------------------|--------------------------------|
| {BRACKENGRÆ BEAU LAD | {TRANGIE M390 BEAU AARON |
| MCR STANDING BEAR | {GLEN INNES M343 |
| FM 4726 {BRAMBLETYE TRANGI GIRL | {QUARTERDECK Q118 |
| | {GLEN INNES J306 |
| | {ATHANLEE HERMAN |
| {BRAMBLETYE TRANSAM | {BRAMBLTYE SEPTEMBER L503 |
| FAIRWYN'S SANTANA | {ATHANLEE HERMAN |
| FF 4686 {FAIRWYN'S LUCINDA | {BRAMBLETYE PERFECTION II H002 |

✓ *How about this half sister to a \$13,000 heifer that sold at the 2010 NWSS Lowline sale. Out of Fairwyn's Santana, an \$18,500 open heifer at the 2008 NWSS Lowline sale, and by none other than MCR Standing Bear, whose first daughter sold for \$10,000 at the 2009 NWSS Lowline sale. MCR Bear Necessities is from a long line of money earners.*

OPEN FULLBLOOD FEMALES



19

LLB CKansee 857X

BD: 3-21-10 Fullblood Open Heifer
 Reg.: FF 11855 Tattoo: LLB 857X
 BW: 50 Adj. WW:
 Consignor: Lakeville Lowline Breeders



{BAY LADD
 LLB JACKPOT T93
 FM 6205 {JP48 L

{BRACKENGRÆ BEAU LAD
 {BRAMBLETYE 0124
 {JACKPOT
 {ZINGER
 {ATHANLEE HERMAN
 {GI J306
 {
 {

{TEQUILA
 MISS MAI T857
 FF 6186 {MISS MAIMIE 05

✓ CKansee will add old bloodlines with a new look. Clean front, correct walk, straight back. Her grandmother on the sire's side was Iowa cow/calf champion. Her mom was an embryo from my best flush cow and as a '98 model, still gives me a great calf every year.

20

Lazy G Isadora

BD: 3-24-10 Fullblood Open Heifer
 Reg.: FF 11954 Tattoo: 3X4
 BW: 44 Adj. WW:
 Consignor: Lazy G Lowlines



{BLUEY
 LAZY G RED BY DESIGN
 FM 7126 {GOAN BLACK OPAL

{GOAN WANDOO II
 {GOAN BLACK OPAL
 {TRANGIE M377
 {TRANGIE L109
 {GOAN WANDOO II
 {GOAN BLACK OPAL
 {THE GLEBE BRAVEHEART
 {TRANGIE M476

{BLUEY
 LAZY G ISABELLE
 FF 7131 {TOP OF THE RANGE TAMARA

✓ This has got to be one of the best daughters of Red by Design to date. She's big-bodied, yet very feminine. Broad, straight topline, and very deep. If you're looking for a show heifer, look no further. Whether you show or not, she'll make a great brood cow. She's a red gene carrier too, so will work in either a black or red breeding program.



22

21

LLB CKme 007X

BD: 4-2-10 Fullblood Open Heifer
 Reg.: FF 11856 Tattoo: LLB 007X
 BW: 52 Adj. WW:
 Consignor: Lakeville Lowline Breeders



{BAY LADD
 LLB JACKPOT T93
 FM 6205 {JP48 L

{BRACKENGRÆ BEAU LAD
 {BRAMBLETYE 0124
 {JACKPOT
 {ZINGER
 {ATHANLEE HERMAN
 {
 {

{BRAMBLETYE TEQUILA
 LLB MISS SUNTOOL T007
 FF 6187 {MISS MAIMIE 05

✓ This sweet, open heifer will give you leg and length. She will show and complement any herd. Ck-Me-Out, sire, Jackpot T93 is a quality bull from Bay Ladd and her dam, Miss Suntoo T007 has the body.

22

LLB Taraweddyr

BD: 4-5-10 Fullblood Open Heifer
 Reg.: FF 11841 Tattoo: LLB X76
 BW: 48 Adj. WW:
 Consignor: Lakeville Lowline Breeders



{BUZZ
 SC SHANE
 FM 4349 {BRAM. WILLOW

{BRAMB. TEQUILA
 TARASEMO
 FF 1408 {BAW TAWNY

{RAWHIDE R157
 {BRAMB. PERFECTION II
 {NEVADA N060
 {BRAMBLYE Q116
 {ATHANLEE HERMAN
 {GI J306
 {
 {

✓ This SC Shane calf has the look of a bride, eye-appealing and feminine. Her dam is a mid-frame cow that can be appreciated in many ways.

OPEN FULLBLOOD FEMALES



This 2009 National Champion Female is the dam of lot 23.

23

Bar J Nell 7T41-0X10

BD: 4-8-10 Fullblood Open Heifer
Reg.: FF 11938 Tattoo: 0X10
BW: Adj. WW:

Consignor: Jake Reed



| | |
|---------------------------------|--------------------------|
| {COLOMOBO PARK ZEFFIRELLI | {APPERTARRA RANDY |
| DBL J'S THE BRICK | {COLOMBO PARK VIOLETTA |
| FM 5887 {MISS JETS BRENTON 267K | {ELIZA PARK BRENTON N001 |
| | {GI N331 |
| | {BRAMBLETYE TEQUILA |
| {BAR J AGAVE P54 | {BAR J WINNIE 7G11-2M9 |
| BAR J NELL 4P13-7T41 | {BAR J PONDEROSA OK13 |
| FF 7208 {BAR J NELL OK9-4P13 | {BAR J NELL OK9 |

✓ *Breeders take note here. This heifer is the result of the mating of the 2009 national champion bull and female. Seldom does this opportunity afford itself. She is a herd builder.*

24

Lazy G Red Gem

BD: 4-10-10 Fullblood Open Heifer
Reg.: FF 11955 Tattoo: 4X14
BW: 50 Adj. WW:

Consignor: Lazy G Lowlines



| | |
|-------------------------------|------------------|
| {BLUEY | {GOAN WANDOO II |
| LAZY G RED BY DESIGN | {GOAN BLACK OPAL |
| FM 7126 {GOAN BLACK OPAL | {TRANGIE M377 |
| | {TRANGIE L109 |
| | {GOAN WANDOO II |
| {BLUEY | {GOAN BLACK OPAL |
| LAZY G JEWEL | {THE GLEBE CURLY |
| FF 5482 {TOP OF THE RANGE JEM | {THE GLEBE JEMMA |

✓ *This red heifer is one of the best daughters of Red by Design to date. She's straight, big-bodied, excellent hip, plus very deep. This fancy heifer will turn heads wherever she goes. This is a great opportunity to start, or enhance your own red breeding program.*



24



25

25

High Hopes Audi

BD: 4-14-10 Fullblood Open Heifer
Reg.: FF 11019 Tattoo: X15
BW: Adj. WW:

Consignor: High Hopes Farm



| | |
|---------------------|----------------------------|
| {RML BLACK ICE NG03 | {BCR ALEX'S ADMIRAL LG07 |
| RML BLACK DIAMOND | {BCR DIANA LE03 |
| FM 3142 {MANDIE | {BRAMB. COMMANDER II MO045 |
| | {WL FLOSSY 33H |
| | {BRAMB.Q117 QUARTERMASTER |
| {FAIRWYN'S NEROMAN | {BHR LEXI |
| BCF NERO LIBERTY | {BRAMBLETYE TEQUILA |
| FF 6615 {SWEETQUILA | {BAR J NELLIE 7G1 |

✓ *Our best 2010 heifer at weaning. Should make a show heifer and cow. First calf out of a sister to GNS Glen Ellen 3R.*

OPEN FULLBLOOD FEMALES

26

DDR Lisa Lee

BD: 5-23-10 Fullblood Open Heifer
Reg.: FF 11970 Tattoo: DDR10X
BW: 43 Adj. WW:

Consignor: Double D Ranch



| | |
|-------------------------|---------------------------|
| {BRACKENGRAE BEAU LAD | {TRANGIE M390 BEAU AARON |
| EZ LIZBON 29L | {GLEN INNES M343 |
| FM 1756 {EZ OLIVIA 15G | {GOAN MESSMATE P012 |
| | {GLEN INNES E361 |
| | {NEVADA N060 |
| {EZ LEXUS 18L | {BRAMBLETYE ST. LOUISE |
| EZ LEXIE LEE 46R | {BRAMBLETYE UNION PACIFIC |
| FF 3649 {MUGGA LEE 9L | {ALM MID MUGGA 05J |

✓ *Out of a an outstanding Lexus daughter. This heifer will be a complete, maternal female.*

27

DDR St Beau Lou

BD: 5-29-10 Fullblood Open Heifer
Reg.: FF 12009 Tattoo: DDR11X
BW: 44 Adj. WW:

Consignor: Double D Ranch



| | |
|------------------------------|---------------------------|
| {TRANGIE M390 BEAU AARON | {TRANGIE SALTBUSH K208 |
| BRACKENGRAE BEAU LAD | {TRANGIE E120 |
| AULM M0543 {GLEN INNES M343 | {TRANGIE J142 |
| | {GLEN INNESS E307 |
| | {TRANGIE F249 |
| {BRAMB. ADMIRAL TRA J222 | {TRANGIE F037 |
| BRAMBLETYE ST. LOUISE | {TRAK162 BRAMB. COMMANDER |
| FF 16 {BRAMBLETYE ANGESS II | {GLEN INNES J306 |

✓ *Wow! What a pedigree. This daughter of Beau Ladd, out of the dam of Lexus, is a real diamond in the rough.*

28

MLC Merlott

BD: 6-23-10 Fullblood Open Heifer
Reg.: Tattoo:
BW: Adj. WW:

Consignor: Mellott Lowline Cattle



| | |
|-------------------------|------------------------------|
| {BRAMBLETYE TEQUILA | {ATHANLEE HERMAN |
| LLB MR RIB R508 | {GLEN INNES J306 |
| FM 4124 {QUEENIE | {BRAMBLETYE ADMIRAL TRA J222 |
| | {BRAMBLETYE BRONWYN II |
| | {BELL BRAE BORIS |
| {BR BORCIE 2L | {BR PHOENIX 003H |
| RML MILAN | {SCR DOMINATOR |
| FF 4800 {BCR DIANA LE03 | {SUN CREEK'S DIANA |

✓ *Thick, deep, and fancy. A true show heifer with donor cow possibilities. This mating will have excellent carcass quality for ribeye size and shape, marbling, and tenderness. Her sire, Mr Rib, is building a reputation for quality. With BR Phoenix and Bell Brae Boris on the bottom side.*

29

JJ Jewell 3X

BD: 7-7-10 Fullblood Open Heifer
Reg.: FF 11981 Tattoo: JJ3X
BW: Adj. WW:

Consignor: 2J Livestock



| | |
|----------------------------|----------------------------|
| {BRAMBLETYE Q117 QTRMASTER | {TRA M206 MIDSHIPMAN |
| FAIRWYN'S NEROMAN | {TRANGIE J167 BRAMB. FELI. |
| FM 2024 {BHR LEXI | {BRAMBLETYE SNOTTY |
| | {BRAMBLETYE GERALDINE III |
| | {BELL BRAE BORIS BELL |
| {BR ABSOLUT 1L | {BR BOBBY JO |
| JJ SADIE | {BR COMMANDER II M045 |
| FF {BR WINNIE THE MOO 3K | {BR MINI MOUSE |

✓ *This summer heifer calf is really fancy – clean fronted, long, and correct. Last year the Neroman sired calves were some of the yard favorites. If you are looking for a heifer to show next summer don't miss Lot 29.*

✓ **CATTLEMEN:** you can increase your stocking rate by 20-30%, sell more pounds of calf per acre at a higher price and increase the profitability of your ranch. **USE LOWLINE BULLS.**

University research has proven that Lowline composites are more efficient, have higher carcass merit and retain the positive Angus characteristics. Lowline bulls excell at calving ease, sire vigorous calves and have longevity in a heifer breeding program. You will also find a

higher percentage of pregnant first calf heifers. For more information on the Lowline breed contact the American Lowline Registry at www.usa-lowline.org or visit with a Lowline breeder in your area.

1/2 blood cows with their 1/4 blood Lowline calves



FULL BLOOD BULLS

30

Lazy G Chance

BD: 2-16-08
Reg.: FM 7125
BW: 46

Fullblood Bull
Tattoo: U1
Adj. WW:



Consignor: Lazy G Lowlines

BLUEY
FM {GOAN WANDOO II
{GOAN BLACK OPAL

{GLEN INNES N249
{GOAN WATTLE II
{TRANGIE M377
{TRANGIE L109
{MUGGA REGENT
{MURRUMBONG LUCY MAY
{ADMIRAL
{BR. SUNSHINE TOO

LAZY G SADIE
FF {MURRUMBONG ROULETTE
{BR. SILVER SPUR

✓ *This red gene carrier bull has some of the best genetics in the Lowline breed. His sire, Bluey, has progeny that continue to top the sales, and his grandsire, Murrumbong Roulette, was unbeatable in the show ring in Australia. (One judge called him, "flawless, the perfect bull.") Chance is well balanced, clean fronted, very long bodied. He's ready to go to work for you.*



31

RL Telluride Image 7

BD: 2-11-09
Reg.: FM 10069
BW: 54

Fullblood Bull
Tattoo: RLW7
Adj. WW:



Consignor: Reed's Lowline Angus

{ELIZA PARK BRENTON N001 {BRAMBLETYE BOSUN L006
LTL TELLURIDE {GI J369 BRAMBLETYE SUZANNAH
FM 1456 {BR MINI MOUSE 002H {BRAMBLETYE ADMIRAL TRA J222
{BRAMBLETYE OLIVE II M053
{BRAMBLETYE BOSUN'S MATE
{ALM ANVIL 10J {BRAMBLETYE PERFECTION VI 011
BCR MISS FLORENCE MG21 {TRA M206 MIDSHIPMAN
FF 1386 {FLORENCE {MUGGA MARNIE KL290

✓ *Grand champion Lowline bull at the Eastern Idaho State Fair and reserve grand champion English breeds at the 2010 Wyoming State Fair. He carries the genetics of Eliza Park Brenton N001 and Brambletye Admiral TRA J222 on the top side; with TRA M206 Midshipman on the bottom side. He has length, width, depth, stride and a very gentle disposition.*

32

Fairwyn's Red Bull

BD: 4-12-09
Reg.: FM 9216
BW:

Fullblood Bull
Tattoo: 903W WYN
Adj. WW:



Consignor: Fairwyn Farms

{GOAN WANDOO II
MURRUMBONG LGL BLUEY
FM 4064 {GOAN BLACK OPAL

{GLEN INNES N249
{GOAN WATTLE III
{TRANGIE M377
{TRANGIE L109
{GOAN MACQUARIE II
{GOAN JEWEL LADY
{GOAN WANDOO II
{GOAN BLACK OPAL III

{VITULUS Y-R
VITULUS BRILLIANT RED
FM 5425 {CAMDON DOT

✓ *Fairwyn's Red Bull will be a great bull for anyone getting into the red gene pool. Out of a red dam and the great Bluey red bull. Look no further.*



"Bluey" – Sire of Lot 32

FULLBLOOD BULLS



33

Alta Black Jack BIL 10W

BD: 5-19-09
Reg.: CAN 478
BW: 48

Fullblood Bull
Tattoo: BIL 10W
Adj. WW:

Consignor: Big Island Lowlines



| | |
|------------------------|---------------------------|
| {GLENFIDDICH ANGUS 503 | {BRAMBLETYE COMMODORE III |
| APOLLO SCR 43J | {GLEN INNES L424 |
| CAN 104 {TRANGIE L223 | {TRANGIE J216 |
| | {TRANGIE H020 |
| {KOTINGA ROCKY | {BRAMBLETYE CAPTAIN III |
| ALTA VELVET BIL 10K | {BRAMBLETYE ELATION II |
| CAN 81 {KOTINGA SHEBA | {BRAMBLETYE ADMIRAL II |
| | {TRANGIE J152 |

✓ Have you heard that a bull is only as good as his mother, and that good bulls sire good females? Alta Black Jack has it all working for him. His mother has produced 2 junior champion females at the Canadian National. One of Black Jack's full sisters resides at Muddy Creek Ranch and another full sister is in the donor program in Mark Gillis' herd. Alta Black Jack's paternal brother sired 3 class winners at this year's Kansas City American Royal. Alta Black Jack's sire, Apollo, has been a cornerstone at Big Island, and has sired a Canadian grand champion bull. He breeds true. Apollos cross well with cattle that have Nevada, Jamberoo, Knight Crawler and Admiral II in their pedigrees. Apollo is no longer working and this could be one of the last direct sons we have.

Black Jack's paternal brother sired 3 class winners at this year's Kansas City American Royal. Alta Black Jack's sire, Apollo, has been a cornerstone at Big Island, and has sired a Canadian grand champion bull. He breeds true. Apollos cross well with cattle that have Nevada, Jamberoo, Knight Crawler and Admiral II in their pedigrees. Apollo is no longer working and this could be one of the last direct sons we have.

SELLING CHOICE OF THIS OUTSTANDING PEN OF STANDING BEAR SONS



34A

MCR Bear Market

BD: 2-27-10 Fullblood Bull
Reg.: FM 11092
Tattoo: MCR X12 BW: 52
Consignor: Muddy Creek Ranch



MCR STANDING BEAR
FM 4726

| | |
|---------------------------|------------------------------|
| {BRAMBLETYE COMM. II M045 | {TRAK 162 BRAMBLETYE |
| CJN SOPHEEA | COMMANDER |
| FF 5230 {WL APRIL 334H | {BRAMBLETYE PERFECTION F183 |
| | {BRAMBLETYE ADMIRAL TRA J222 |
| | {BRAMBLETYE BRONWYN II |

34B

MCR Yukon

BD: 3-2-10 Fullblood Bull
Reg.: FM 11090
Tattoo: MCR X15 BW: 60
Consignor: Muddy Creek Ranch



MCR STANDING BEAR
FM 4726

| | |
|--------------------------|------------------------------|
| {ALM CLOUT 27H | {BRAMBLETYE ADMIRAL TRA J222 |
| EZ QUEENIE 13N | {BRAMBLETYE AGNESS II |
| FF 2343 {BRAMBLETYE Q133 | {BRAMBLETYE BOSUN L006 |
| | {GLEN INNES J306 |

MCR Standing Bear (FM 4726)

BRACKENGRAE BEAU LAD
SIRE

{TRANGIE M390 BEAU AARON
{GLEN INNES M343

BRAMBLETYE TRANGI GIRL
DAM

{QUARTERDECK Q118
{GLEN INNES J306

34C

MCR Yogi Bear

BD: 4-3-10 Fullblood Bull
Reg.: FM 11089
Tattoo: MCR X23 BW: 56
Consignor: Muddy Creek Ranch



MCR STANDING BEAR
FM 4726

| | |
|-------------------------------|--------------------------------|
| {BRAMBLETYE ULTRA BEAU | {BRACKENGRAE BEAU LAD |
| DDR BUTTERFLY | {BRAMBLETYE PERFECTION VI |
| FF 5908 {BAR J GERI 8H12 1L19 | {BRAMBLETYE Q117 QUARTERMASTER |
| | {BAR J GERI 8H12 |

FULLBLOOD BULLS

35

5H Huckleberry X01

BD: 3-27-10
Reg.: FM 11595
BW: 64

Fullblood Bull
Tattoo: 5HX01
WW: 402



Consignor: 5H Farm

{KINTYRE DUNDEE
DOC HOLLIDAY
FM 2117 {KINTYRE MELROSE ABBEY

{TRANGE M214 ROUSEABOUT
{TRANGIE J303
{BRAMBLETYE BOSUN II
{TRANGIE K238
{APPERTARRA RANDY
{ARDROSSAN DANA
{COLOMBO PARK TANNHAUSER
{MUGGA SABRINA

{MONTE ALLEGRO ARTUSSI
5H URSULA
FF 7085 {COLOMBO PARK ALCINA

✓ *This dam's genetics are 100% import and have been a foundation of Spring Creek Farm. She was grand champion heifer calf and reserve champion female at the 2008 Iowa State Fair.*



SELLING CHOICE OF THESE SONS OF OUTLAW!



Outlaw (FM 5996)

{APPERTARRA RANDY
COLOMBO PARK ZEFFIRELLI
(AULM 5382) {COLOMBO PARK VIOLETTA
SIRE

{BRAMBLETYE Q117 QUARTERMASTER

VAL (FF2026)
DAM

{8K231

"Outlaw" - Son of Australian Grand Champion - Laramie County (Cheyenne) Lowline Grand Champion three years in a row (2007-09) - Champion senior bull Montana 2009 - Denoted as most powerful bull presented in every show, to include Denver as a junior and Montana as a senior - Genetic lines stopped with him on dam's side given untimely demise of Sheridan's Farm VAL - Recorded 14 inch ribeye as two-year-old and 1,400 pounds.

Dam is also of good, sound quality with champion lines - Calf prepared and presented by Laramie County Community College (Cheyenne) and part of sale proceeds to benefit this outstanding youth organization.

36A

Outlaw's Frank

BD: 3-28-10
Reg.: 11952

Fullblood Bull
Tattoo: COW 42X



Consignor: Cheyenne Outlaw, LLC

OUTLAW
FM 5996

{BR ABSOLUT 1L
JJ SANDIE 4S
FF 4720 {BR MINI MOUSE 002H

{BELL BRAE BORIS
{BR BOBBI JO 004H
{BRAMBLETYE ADMIRAL TRA J222
{BRAMBLETYE OLIVE II

36B

Outlaw's Jesse

BD: 3-30-10
Reg.: 11950

Fullblood Bull
Tattoo: COW 44X



Consignor: Cheyenne Outlaw, LLC

OUTLAW
FM 5996

{BAR J LEGACY 4P 57
BAR J VIOLET 6S 57
FF 4817 {BAR J NELL OK9-4P13

{FAIRWYN'S LEGACY
{BAR J NELL 9J25
{BAR J PONDEROSA OK13
{BAR J NELL OK9

36C

Outlaw's James

BD: 4-28-10
Reg.: 11951

Fullblood Bull
Tattoo: COW 43X



Consignor: Cheyenne Outlaw, LLC

OUTLAW
FM 5996

{BRAMBLETYE COMMANDER II M045
BR WINNIE THE MOO 3K
FF 615 {BR MINI MOUSE 002H

{TRAK 162 BRAMBLETYE
COMMANDER
{BRAMBLETYE PERFECTION F183
{BRAMBLETYE ADMIRAL TRA J222
{BRAMBLETYE OLIVE II

FULLBLOOD BULLS

37

Lazy G Haley's Red Comet

BD: 4-17-10
Reg.: FM 11956
BW: 60

Fullblood Bull
Tattoo: 4X19
Adj. WW:



Consignor: Lazy G Lowlines

{BLUEY
LAZY G RED BY DESIGN
FM 7126 {GOAN BLACK OPAL

{GOAN WANDOO II
{GOAN BLACK OPAL
{TRANGIE M377
{TRANGIE L109
{GOAN WANDOO II
{GOAN BLACK OPAL
{THE GLEBE CURLY
{TRANGIE M476

{BLUEY
LAZY G HALEY
FF 7134 {TOP OF THE RANGE TINA

✓ One of the first red sons of Red by Design and this bull is a beauty! Deep bodied, well muscled bull, Comet is a real show stopper. His father is one of the top marbling bulls in the breed and we expect Comet to follow in his sire's footsteps. This is a great opportunity to start your own red breeding program.



PUREBRED & PERCENTAGE BULLS

38

LR Whats Up Doc

BD: 3-8-09
Reg.: XM 8980
BW: 60

1/2 Blood Bull
Tattoo: 28W
Adj. WW:



Consignor: Lenhard Angus Ranch

{KINTYRE DUNDEE KLCP003
BCC DOC HOLLIDAY 04P
FM 2117 {KINTYRE MELROSE ABBEY

{TRANGIE M214 ROUSEABOUT
{TRANGIE J303

{PROMISE OF PO
LAR PRETTY BIRD 728
UAN 1569230 {ROLLIN ROCK BLACKBIRD 6663

{TANGIE K238
{FANCY MAN OF PO
{WINTER ROSE OF PO
{LEACHMAN AXIOM
{ROLLIN ROCK BLACKBIRD

✓ Supreme champion at the 2010 NW Lowline Classic. His mother is registered Angus, making him 100% Angus.



“Bluey” – Sire of Lots 40, 64 & 65
and grandsire of Lot 37

1/2 BLOOD BULLS – SELLING CHOICE



Wanamara Findon Royale (FM 7445)

ARDROSSAN FINDON
FM 5082

{ARDROSSAN RICHMOND
{ARDROSSAN CARLA

KIMBOLTON DRAPHNE
AULF 4965

{WANAMARA VANDER-KUYP
{KIMBOLTON COSMOS

39A **MCR Shake Rattle-N-Royale**
BD: 2-22-10 1/2 Blood Bull
Reg.: XM11779 Tattoo: MCR OX12
Birth Weight: 72
Consignor: Muddy Creek Ranch



SIRE: WANAMARA FINDON ROYALE

DAM: MCR AN DAM

39B **MCR Royale Rumble**
BD: 2-22-10 1/2 Blood Bull
Reg.: XM11777 Tattoo: MCR 10X
Birth Weight: 76
Consignor: Muddy Creek Ranch



SIRE: WANAMARA FINDON ROYALE

DAM: MCR AN DAM

39C **MCR Battle Royale**
BD: 1-21-10 1/2 Blood Bull
Reg.: XM11776 Tattoo: MCR OX10
Birth Weight: 77
Consignor: Muddy Creek Ranch



SIRE: WANAMARA FINDON ROYALE

DAM: MCR AN DAM

1/2 BLOOD BULL

40 **EBC Frosted Red 01X**
BD: 3-25-10 1/2 Blood Bull
Reg.: XM 11718 Tattoo: EBC 01X
BW: Adj. WW:
Consignor: Schmit Farms



{GOAN WANDOO II
MURRUMBONG LGL BLUEY
FM 4064 {GOAN BLACK OPAL

{GLEN INNES N249
{GOAN WATTLE III
{TRANGIE M377
{TRANGIE L109

{MM RADIO ACTIVE
LAKEVIEW ROBIN RA817
11713 {LAKEVIEW ROBIN BX181

✓ *The first red roan to sell at auction out of a registered Shorthorn. Will mature into a nice breeding bull.*

3/4 BLOOD BULL

41 **RLL Wild Fire**
BD: 5-2-10 3/4 Blood Bull
Reg.: Tattoo:
BW: Adj. WW:
Consignor: Dakota Lowlines



{VITULUS Y-R
VITULUS BRANDED RED
FM 5429 {CAMDON RUBY

{GOAN MACQUARIE II
{GOAN JEWEL LADY
{GOAN WANDOO II
{GOAN BLACK OPAL
{BRAMB.Q117 QUARTERMASTER
{EZ OLIVIA 15G

{BLACK MASTER 01J
RLL KATE 6112
XF 6490 {ANGUS COW

✓ *Holy Moly! Call 911! He is a 3/4 blood red, 3/4-brother to Fireman and Fire Fly. Super thick with style to burn. Will have Genestar data and ultrasound data available. DNA tested and on file at ALR for parentage verification. Retaining 25% semen interest.*

View on You Tube at:

www.youtube.com/watch?v=RwEy30gkPvY

PUREBRED BULL

42

Commander Clout

BD: 3-31-10
Reg.: PM 11193
BW: 60
Consignor: Open Diamond Bar Cattle Co.

Purebred Bull
Tattoo: 310X
Adj. WW:



| | |
|--------------------------------|------------------------|
| {BRAMBLETYE ADMIRAL TRA J222 | {TRANGIE F249 |
| ALM CLOUT 27H | {TRANGIE F037 |
| FM 9 {BRAMBLETYE AGNESS II | {TRAK 162 BRAMB. COMM. |
| | {GLEN INNES J306 |
| | {BROKEN ARROW NERO |
| {ARDROSSAN NERON | {ARDROSSAN DELVENE |
| MCR MOCHA | {BRAMBLETYE ULTRA BEAU |
| XF 7403 {EZ MISS ULTRA BEAU M2 | {BRAUNVIEH COW |

✓ *Great little bull to build your commercial herd. Very quiet disposition. Great conformation and bloodlines to match. Would be a great addition for any herd.*

HEIFER CALF PREGNANCY



Ardrossan Isadora ~ Dam of Lot 43

43

Heifer Calf Pregnancy

Due April 2011
Consignor: Ausmerica Alliance Lowline Stud



| | |
|----------------------------------|------------------|
| {ARDROSSAN NERON | { |
| ARDROSSAN JAMBEROO | { |
| ARD B261 {ARDROSSAN NARDIA | { |
| | {ARDROSSAN CARLA |
| | { |
| {EUNGELLA TRENTHAM | { |
| ARDROSSAN ISADORA | { |
| ARD X181 {BROKEN ARROW OPAL NERA | { |

✓ *Does not include recipient. Guaranteed live calf will be raised until weaning at Ausmerica Alliance Isadora is a complete cow with excellent temperament, milk production, muscle and soundness. Her sire was many times champion in Australia. Jamberoo's granddam, Ardrossan Carla, is also the granddam of Findon Royal.*

FULLBLOOD FLUSH



Bar J Brook 9W5 ~ Daughter of Lot 44

44

BD: 3-24-02
Reg.: FF 1576
BW:

SC Brook

Fullblood Flush Cow
Tattoo: 118M
Adj. WW:

Consignor: Lazy G Lowlines



| | |
|--------------------------------|------------------|
| {BROKEN ARROW KAPTAIN MIDNIGHT | {KNIGHT CRAWLER |
| BELL BRAE BORIS BEL T008 | {GLEN INNES N308 |
| FM {TRANGIE K004 | {TRANGIE H153 |
| | {TRANGIE H301 |
| | {TRANGIE F249 |
| {ADMIRAL | {TRANGIE F037 |
| ALM BESS | {TRANGIE E087 |
| FF {BR. TARA | {GLEN INNES E383 |

✓ *We're offering a flush from the dam of the top selling heifer at the 2010 NWSS sale last year. Brook is one of the most influential red gene carriers in the Lowline breed. We're offering (1) successful flush in 2011 from this great cow at the buyer's expense and will guarantee at least (4) embryos from this flush. Additional embryos, if available, will be offered to the buyer for the same price per embryo. We will offer semen from any of our bulls to be used on this flush. If the buyer prefers to use a different bull they will be responsible for shipping (3) straws of semen at their expense. We will have a daughter of Brook available for viewing at the 2011 NWSS in Denver.*

EMBRYO PACKAGES

45

**(3) #1 Embryos
stored in Montana**

Consignor: Ausmerica Alliance Lowline Stud



| | | |
|--------------------------------|---|-------------------------|
| {BROKEN ARROW NERO BAS U90 | { | {BROKEN ARROW OPAL NERO |
| ARDROSSAN TIGERTIM | { | {ARDROSSAN PETER |
| FM {KIMBOLTON MIRACLE KPS-P001 | { | {GI J354 |
| | { | { |
| {ABF JAMES BOND L007 | { | { |
| ARDROSSAN CARLA | { | { |
| FF {GI J330 | { | { |



Ardrossan Carla ~ Dam of Lot 45

✓ *Carla was reserve champion female at Melbourne as a 12 month old and produced a daughter that achieved the same honor. A son was also Melbourne champion and produced Findon Royal. Mated to the calving ease, high grow Tigertim. We expect excellent results.*

46

(4) #1 Embryos

Consignor:
Ausmerica Alliance Lowline Stud



| | | |
|----------------------------------|---|------------------|
| {ARDROSSAN NERON | { | |
| ARDROSSAN JAMBEROO | { | |
| FM {ARDROSSAN NARDIA | { | {ARDROSSAN CARLA |
| | { | { |
| {TRA J037 JOCK | { | { |
| KIMBOLTON HARMONY KPSW019 | { | { |
| FF {KIMBOLTON MIRACLE | { | { |



Ardrossan Jamberoo ~ Sire of Lot 46

✓ *These embryos represent an opportunity for breeders to purchase something different, new and unique which will be sought after by other breeders.*



Ardrossan Richmond ~ Grandsire of Lot 47

47

(6) #1 Embryos

Consignor:
Ausmerica Alliance Lowline Stud



| | | |
|----------------------------------|---|--|
| {ARDROSSAN RICHMOND | { | |
| ARDROSSAN NHANCE | { | |
| ARD 2214 {CASUARINA BECKY | { | |
| | { | |
| {EUNGELLA TRENTHAM | { | |
| ARDROSSA ISADORA | { | |
| ARD-X181 {BROKEN ARROW OPAL NERA | { | |

✓ *A pedigree full of champions and quality production cattle. These embryos represent an opportunity to inject genetics into your herd that will not be repeated, but will leave a lasting impression.*

EMBRYO PACKAGES



48

48

(7) Fullblood Embryos

Consignor:
Fanning Cattle Co. & Springhill Farm



| | |
|---------------------------------|----------------------|
| {MIDSHIPMAN M206 | {KAPTAIN PLANET K001 |
| EZ MAGNUM 72J | {TRANGIE C124 |
| FM 1909 {MUGGA MARNIE L290 | {TRANGIE J260 |
| | {TRANGIE C192 |
| | {TRANGIE F249 |
| {ADMIRAL J222 | {TRANGIE F037 |
| LUCKY 7 | {TRANGIE F069 |
| F0036 {BRAMBLETYE AMICABLE J152 | {TRANGIE F153 |

✓ EZ Lady Luck is a very popular and attractive donor cow. She was grand champion female at the 2004 American Royal and 2005 reserve grand champion female. Her sire, Magnum, sired the 2006 national champion female. She is a fantastic

donor who produces exciting show cattle by a variety of bulls. They all seem to possess her style, balance and clean lines.
Lot 48A: 4 embryos sired by Jackaroo, the two time Australian champion whose first calves are making a big impact in the show ring. He sired the 2010 American Royal champion bull, the 2010 American Royal champion get-of-sire and the 2010 Melbourne reserve champion female. The Jackaroo calves have exceptional thickness, muscle and fleshing ability and a very attractive look.

Lot 48B: 3 embryos sired by Beau Lad, the direct Australian import whose progeny have excelled in carcass traits and carcass DNA markers. He produces calves with tremendous style and balance that grow into exceptional show cattle.



Vitulus Champion ~ Sire of Lots 49A, B & C

49A

(2) Grade A Fullblood Embryos

Consignor: Vitulus Lowline Stud



| | |
|--------------------------------|----------------------|
| {BURNT CREEK KELVIN | {BURNT CREEK ERIC |
| VITULUS BLACK MAGIC AUL 7613 | {BURNT CREEK FIDELMA |
| DAM {SOUTHERN CROSS SUMMER 2ND | {MUGGA TAKIN |
| | {BINNOWEE SUMMER |

✓ These export quality embryos are already stored in the USA at Hawkeye Breeders. Both Champion and his parents were Royal show winners, being big volumed line. Tango is a beautiful big female (weighing 1,050 lbs). Champion (weighing 1,500 lbs.) genetics go back to Bosun and J303. Black Magic is a long female whose progeny have also been sold to the EU.

{ZEFFIRELLI
VITULUS CHAMPION
AUL 7509 {VITULUS TANGO

{APPERTARRA RANDY
{COLOMBO PARK VIOLETTA
{BRAMBLETYE BOSUN II
{TRANGIE J303

49B

(3) Grade A Fullblood Embryos

Consignor: Vitulus Lowline Stud



{ARDROSSAN FINDON
SOUTHERN CROSS SILVER SISTER
AUL 7703 {ANTHANLEE CASEY
DAM

{ARDROSSAN RICHMOND
{ARDROSSAN CARLA
{BRAMBLETYE COMMANDER II
{GLEN INNES E375

✓ These export quality embryos are already stored in the USA at Hawkeye Breeders. Both Champion and his parents were Royal show winners, being big volumed line. Tango is a beautiful big female (weighing 1,050 lbs). Champion (weighing 1,500 lbs.) genetics go back to Bosun and J303. Silver Sister's progeny have also been sold to the EU. She has the well-known Ardrossan Findon and Commander II genetics in her pedigree.

49C

(4) Grade A Fullblood Embryos

Consignor: Vitulus Lowline Stud



| | |
|---------------------------|-----------------|
| {KINTYRE ROBERT THE BRUCE | {KINTYRE DUNDEE |
| VITULUS YLANG YLANG | {TRANGIE K507 |
| 9406 {GLEN INNES L487 | {TRANGIE H155 |
| DAM | {TRANGIE Z132 |

✓ These export quality embryos are already stored in the USA at Hawkeye Breeders. Ylang Ylang is one of our best cows and was grand champion female at the Royal Brisbane show. She has the most amazing milk production, which comes from the L487 line. She is also a fabulous flusher, averaging 12 eggs every time. Both Champion (weighing 1,500 lbs.) and his parents were Royal show winners, being big volumed line. Tango is a beautiful big female (weighing 1,050 lbs.) We will be showing a heifer in 2011 with the same genetics.

EMBRYO PACKAGE

50

(4) 1/2 Blood Embryos

Consignor: Sigel Sunset Ranch



{ALI
BOJO 109 CM 118
}

{ALM WRANGLER 44H
SC VICTORIA S11
FF 4353 {ALM DOT 12S

{ALIAS
{HEAT SEEKER
{BRAMBLETYE ADMIRAL
{BRAMBLETYE LITTLE ONE
{TRA M206 MIDSHIPMAN
{MUGGA MARNIE

✓ *Bojo is an outstanding club calf producer mated to SC Victoria who was the champion summer heifer at the 2009 NWSS. She is an excellent large framed Lowline who will produce some quality F1 show prospects.*

CAN'T ATTEND THE SALE?

BID LIVE, ONLINE AT: LiveAuctions.tv

Real-time bidding is available via the internet for this National Lowline Sale. Live audio and live video will allow buyers to bid on animals just as if they were present at the sale. Please visit www.liveauctions.tv to create an account and request a buyer number. Instructions are available to walk you through the account setup process.

Buyers who would like to bid via the internet must register with LiveAuctions.tv at least two days prior to the sale. For any questions, contact sale management or e-mail: brad@LiveAuctions.tv. The sale management will arrange trucking for your purchases anywhere in the United States.

PUREBRED COWS



51

RL Tellu Miss Bramb

BD: 5-15-09
Reg.: PF 10023
BW: 47

Pureblood Heifer
Tattoo: RLW4
Adj. WW:

Consignor: Reed's Lowline Angus



| | |
|-----------------------------|------------------------------|
| {ELIZA PARK BRENTON N001 | {BRAMBLETYE BOSUN L006 |
| LTL TELLURIDE | {GI J369 BRAMBLETYE SUZANNAH |
| FM 1456 {BR MINI MOUSE 002H | {BRAMBLEYE ADMIRAL TRA J222 |
| | {BRAMBLETYE OLIVE II M053 |
| | {BRAMBLETYE TEQUILA |
| {BLACKJACK | {LCM VALENTINE 1K |
| LCM B.J.'S CASSIE | {ALM CLOUT 27H |
| PF 4262 {EZ MISS CLOUT 306M | {EZ MS QUARTERMSTR E70K |

✓ *She is small framed, full bodied, smooth and very feminine with a very quiet disposition. She carries the genetics of Eliza Park Brenton N001 and Brambletye Admiral J222 on the top side. Brambletye Tequila on the bottom side. She is safe in calf to a son of Brackengrae Beau Lad who carries the genetics of Brambletye Admiral TRA J222. This heifer will make an excellent youth project. A visit to our pen will show her quality and quiet disposition.*

52

MCR Royale Lass

BD: 8-21-09
Reg.: PF 11085
BW: 50

Purebred Heifer
Tattoo: W929 MCR
Adj. WW:

Consignor: Muddy Creek Ranch



| | |
|---------------------------|--------------------------|
| {ARDROSSAN FINDON | {ARDROSSAN RICHMOND |
| WANAMARA FINDON ROYALE | {ARDROSSAN CARLA |
| FM 7445 {KIMBOLTON DAPHNE | {WANAMARA VANDER-KUYP |
| | {KIMBOLTON COSMOS |
| | {BRAMBLETYE TEQUILA |
| {FAIRWYN'S MACHINE | {BRAMB. FAIRWYN'S NATESA |
| MCR BALSAM ROOT | {BLACK MASTER 01J |
| XF 4752 {RLJ JAY LOW 3020 | {ANGUS COW |

3/4 BLOOD BRED HEIFERS

53 BDL Beautiful Disaster WD3
 BD: 4-12-09 3/4 Blood Bred Heifer
 Reg.: XF 11437 Tattoo: BDLWD3
 BW: Adj. WW:



Consignor: B & D Lowlines

| | |
|------------------------------|-------------------------------|
| {BRAMBLETYE TEQUILA | {ATHANLEE HERMAN |
| BAR J CUERVO 2M 35 | {GLEN INNES J306 |
| FM 1728 {BAR J NELL 7G2-OK45 | {BRAMBLETYE COMMANDER II M045 |
| | {BAR J NELL 7G2 |
| | {BRAMBLETYE ADMIRAL TRA J222 |
| {OAK PAYCHECK 22H | {BRAMBLETYE MISTLETOE II |
| MEDFORD 28 | { |
| XF 704 {ANGUS COW | { |

✓ *Dam was NWSS 2002 reserve champion percentage female. Pasture exposed July 1 to December 1, 2010 to Spring Creek Uriah.*



Bar J Cuervo ~ Sire of Lots 53, 54 & 55

54 BDL Against All Odds WD5
 BD: 4-18-09 3/4 Blood Bred Heifer
 Reg.: XF 11438 Tattoo: BDLWD5
 BW: 46 Adj. WW:



Consignor: B&D Lowlines

| | |
|------------------------------|-------------------------------|
| {BRAMBLETYE TEQUILA | {ATHANLEE HERMAN |
| BAR J CUERVO 2M 35 | {GLEN INNES J306 |
| FM 1728 {BAR J NELL 7G2-OK45 | {BRAMBLETYE COMMANDER II M045 |
| | {BAR J NELL 7G2 |
| | {NEVADA N060 |
| {ALM DAKOTA PRIDE | {BRAMBLETYE MORVEN L004 |
| VVCC-203M | { |
| XF 3636 {SALER COW | { |

✓ *Granddaughter on dam's side to Dakota Pride, FM 647. Pasture exposed July 1 to December 1, 2010 to Spring Creek Uriah.*

55 BDL Picture Perfect WD7
 BD: 4-22-09 3/4 Blood Bred Heifer
 Reg.: XF 11439 Tattoo: BDLWD7
 BW: 43 Adj. WW:



Consignor: B&D Lowlines

| | |
|------------------------------|-------------------------------|
| {BRAMBLETYE TEQUILA | {ATHANLEE HERMAN |
| BAR J CUERVO 2M 35 | {GLEN INNES J306 |
| FM 1728 {BAR J NELL 7G2-OK45 | {BRAMBLETYE COMMANDER II M045 |
| | {BAR J NELL 7G2 |
| | {NEVADA N060 |
| {ALM DAKOTA PRIDE | {BRAMBLETYE MORVEN L004 |
| BDL NE14 | { |
| XF 3628 {ANGUS COW | { |

✓ *Granddaughter on dam's side to Dakota Pride, FM 647. Pasture exposed July 1 to December 1, 2010 to Spring Creek Uriah.*



56 RL Tellu Miss Tara
 BD: 5-22-09 3/4 Blood Bred Heifer
 Reg.: XF 10025 Tattoo: RLW5
 BW: 44 Adj. WW:



Consignor: Reed's Lowline Angus

| | |
|-----------------------------|------------------------------|
| {ELIZA PARK BRENTON N001 | {BRAMBLETYE BOSUN L006 |
| LTL TELLURIDE | {GI J369 BRAMBLETYE SUZANNAH |
| FM 1456 {BR MINI MOUSE 002H | {BRAMBLETYE ADMIRAL TRA J222 |
| | {BRAMBLETYE OLIVE II M053 |
| | { |
| {UNDETERMINED | { |
| HIGH HOPES CATERA | {EZ MAGNUM 72J |
| XF 4120 {SOUTHSIDE 21P | {BRAMBLETYE TEXAS LASS |

✓ *Grand Champion Lowline female at the 2010 Eastern Idaho State Fair. She is long, full bodied, smooth and very feminine with an excellent disposition. She carries the genetics of Eliza Park Brenton N001 and Brambletye Admiral TRA J222 on the top side. Brambletye Tequila on the bottom side. She is safe in calf to a son of Brackengrae Beau Lad who carries the genetics of Brambletye Admiral TRA J222. This girl has quality and a sweet disposition. She and her offspring will make an excellent foundation for a purebred herd.*

3/4 BLOOD OPEN HEIFERS



57

MCR Tear Drops
 BD: 3-3-10 3/4 Blood Open Heifer
 Reg.: XF 11102 Tattoo: OX49 MCR
 BW: 67 Adj. WW:
 Consignor: Muddy Creek Ranch



{ARDROSSAN NERON
MCR OPINIONA TED
 FM 7405 {MCR BLUE FLAG

 {MURRUMBONG ULYSSES
MCR MISS BRIDGER
 XF 7398 {COMMERCIAL COW

{BROKEN ARROW NERO
 {ARDROSSAN DELVENE
 {EZ RAILWAY 05N
 {EZ TINKERBELL 27L
 {MUGGA REGENT
 {MUGGA PIAF
 {
 {

✓ *You will be shedding a tear if you miss the chance to own this unique 3/4 blood. Sired by the 2010 national champion bull, this heifer's style and beauty will bring tears of joy.*



58

HSR Brick's Rebel 2X
 BD: 3-31-10 3/4 Blood Open Heifer
 Reg.: XF 11387 Tattoo: HSR2X
 BW: Adj. WW:
 Consignor: Heaven Sent Ranch



{COLOMBO PARK ZEFFIRELLI
DOUBLE J'S THE BRICK 281
 FM 5887 {MISS JET'S BRENTON 267K

 {N016
TEQUILA EZ HOT SHOT
 XF 4960 {EZ MISS NEVADA 904J

{APPERTARRA RANDY
 {COLOMBO PARK VIOLETTA
 {ELIZA PARK BRENTON
 {GLEN INNES N331
 {BRAMBLETYE TEQUILA
 {COMMERCIAL COW
 {NEVADA N060
 {ANGUS COW

✓ *Don't miss out! Not every day do you find a combination like this. This fancy 3/4 blood heifer is an own daughter of the 2 time national champion bull, Double J's The Brick and out of Tequila EZ Hot Shot, the dam of the 2010 American Royal grand champion percentage female and 2008 reserve champion bull calf. She has capacity, thickness and lots of youthful femininity. Take her to the show ring and use her in a composite breeding program, she will be a great addition to any herd.*

*Don't forget to
 buy your Jr.
 raffle tickets!!*

59

RLL Firefly
 BD: 4-23-10 3/4 Blood Heifer
 Reg.: Tattoo:
 BW: Adj. WW:
 Consignor: Dakota Lowlines



{VITULUS Y-R
VITULUS BRANDED RED
 FM 5429 {CAMDON RUBY

 {BLACK MASTER 01J
MISS MASTER 3023
 XF 9001 {COMMERCIAL COW

{GOAN MACQUARIE II
 {GOAN JEWEL LADY
 {GOAN WANDOO II
 {GOAN BLACK OPAL
 {BRAMB.Q117 QUARTERMASTER
 {EZ OLIVIA 15G
 {
 {

✓ *A full sister to the Fireman. This 3/4 blood red female is an outcross to most red programs. It is hard to find anything wrong with this female. The Fireman claims service to over 200 Red Angus females as a yearling for Nikkison Red Lines. MMI-MGV Marbling of 53.91. Complete ultrasound data will be available,*

View on You Tube at:
www.youtube.com/watch?v=RwEy3OgkPvY

5/8 & 1/2 BLOOD OPEN HEIFERS



60

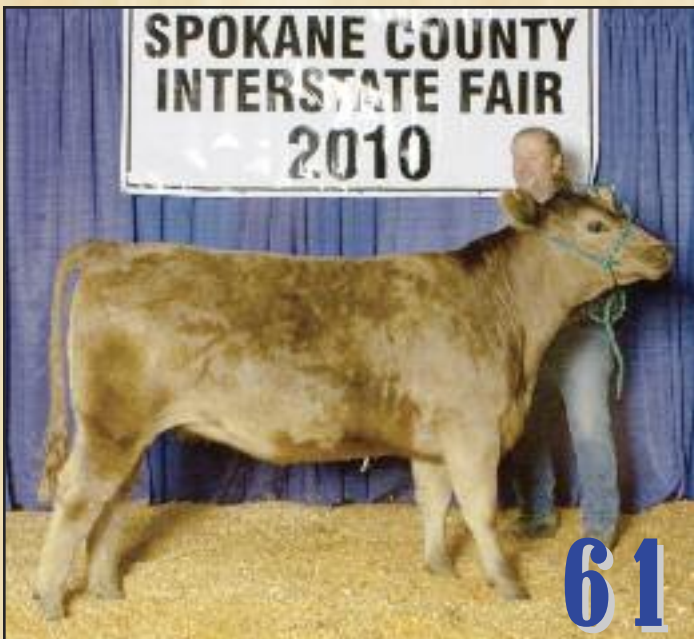
HSR Polly Ann 5X

BD: 4-26-10 5/8 Blood Open Heifer
 Reg.: XF 11392 Tattoo: HSR5X
 BW: Adj. WW:
 Consignor: Heaven Sent Ranch



| | |
|---------------------------------|-----------------------------|
| {MAINE-ANJOU BULL | { |
| DOUBLE J'S DR WHO 2U | { |
| XM 7415 {MISS JET'S ADMIRAL 03H | {BRAMBLETYE ADMIRAL II L035 |
| | {BRAMBLETYE TARA III |
| {BAR J SPARKS 4P16 | {BAR J PONDEROSA OK13 |
| BAR J POLLY T8 | {BAR J TINA 8H3-OK48 |
| XF 6324 {BAR J POLLY 33N | {BAR J PONDEROSA OK13 |
| | {ANGUS COW |

✓ As we say in AR, "Looky Haarre!!" Polly Ann is a cool 5/8s Lowline, 3/8s Maine-Anjou, composite heifer with a fantastic pedigree to match. An own daughter of the 2009 NWSS national champion percentage female and 2008 American Royal grand champion percentage female, Bar J Polly T8, and sired by Double J's Dr. Who 2U, the 2009 Houston Stock Show grand champion percentage bull. A modest framed heifer, with lots of style, thickness, a wide top and an extraordinarily clean front end, she'll work in a composite breeding program and be one you'll want to show off in town.



61

LR Maggie

BD: 2-18-09 1/2 Blood Bred Heifer
 Reg.: XF 11049 Tattoo: 92W
 BW: 54 Adj. WW:
 Consignor: Lenhard Angus Ranch



| | |
|-----------------------------|--------------------------|
| {TRA M206 MIDSHIPMAN | {KAPTAIN PLANET TRA K001 |
| EZ MAGNUM 72J | {TRANGIE C124 |
| FM 1909 {MUGGA MARNIE KL290 | {TRANGIE J260 |
| | {TRANGIE C192 |
| | { |
| LR XX DAM 92 | { |
| U 11048 { | { |

✓ Grand champion percentage female at 2010 NW Lowline Classic. Bred to a great 1/2 blood son of 2006 national champion, Little Joe 305R.

62

LR Miss Rocky R924W

BD: 5-7-09 1/2 Blood Bred Heifer
 Reg.: XF 9880 Tattoo: 924W
 BW: Adj. WW:
 Consignor: Lenhard Angus Ranch



| | |
|------------------------|-------------------------------|
| {BRAMBLETYE ULTRA BEAU | {BRACKENGRÆ BEAU LAD |
| EZ ROCKY 31R | {BRAMBLETYE PERFECTION VI 011 |
| FM 5546 {EZ OLIVIA 15G | {GOAN MESSMATE P012 |
| | {GLEN INNES E361 |
| | { |
| | { |
| ANGUS COW | { |
| UAN2 { | { |

✓ Undefeated in her class in 2010. Her mother is a registered Angus, making her 100% Angus. Pasture exposed June 1 to August 1, 2010 to LR Hoss, 85 days in calf at preg check September 15.

63

EBC Miss Paddy OMalley

BD: 4-2-09 1/2 Blood Bred Heifer
 Reg.: XF 10108 Tattoo: EBC889W
 BW: Adj. WW:
 Consignor: Schmit Farms



| | |
|--------------------------|--------------------------|
| {BRACKENGRÆ BEAU LAD | {TRANGIE M390 BEAU AARON |
| FAIRWYN'S LOW BEAU 204M | {GLEN INNES M343 |
| FM 1294 {GLEN INNES J306 | {TRANGIE E088 |
| | {GLEN INNES F403 |
| | { |
| {PADDY O'MALLEY | { |
| EBC 899 DAM | { |
| U10107 { | { |

✓ This bred heifer out of Paul Schmitz club calves is very deep sided. Bred back to Northern Improvement Angus bull. Will have a quarterblood calf in February.

1/2 BLOOD OPEN HEIFERS



64

BHL Miss Trangie 163X

BD: 2-10-10 1/2 Blood Open Heifer
 Reg.: XF 11750 Tattoo: 163X
 BW: 60 Adj. WW:

Consignor: Bar H Lowlines



| | |
|--------------------------------------|-------------------------|
| {GOAN WANDOO II | {GLEN INNES N249 |
| LGL BLUEY | {GOAN WATTLE III |
| FM 4064 {GOAN BLACK OPAL | {TRANGIE M377 |
| | {TRANGIE L109 |
| {4L ADVANCE VISION R15P | {4L SUPER VISION R2292 |
| TPIE TOP MISS CHEROKEE | {4L MS ADVANCER R16L |
| AR 1280320 {RD TOP MISS CHEROKEE 77E | {BIEBER IMPACT 4399 |
| | {RED TOP MS CHEROKEE 2B |



65

BHL Miss Cherokee 149X

BD: 2-28-10 1/2 Blood Open Heifer
 Reg.: XF 11749 Tattoo: 149X
 BW: 62 Adj. WW:

Consignor: Bar H Lowlines



| | |
|--------------------------------------|-------------------------|
| {GOAN WANDOO II | {GLEN INNES N249 |
| LGL BLUEY | {GOAN WATTLE III |
| FM 4064 {GOAN BLACK OPAL | {TRANGIE M377 |
| | {TRANGIE L109 |
| {4L ADVANCE VISION R51P | {4L SUPER VISION R2292 |
| TPIE TOP MISS CHEROKEE 833 | {4L MS ADVANCER R16L |
| AR 1280331 {RD TOP MISS CHEROKEE 77E | {BIEBER IMPACT 4399 |
| | {RED TOP MS CHEROKEE 2B |



66

High Hopes Sonata

BD: 3-10-10 1/2 Blood Open Heifer
 Reg.: XF 11020 Tattoo: X14
 BW: 52 Adj. WW:

Consignor: High Hopes Farm



| | |
|-------------------|---|
| { | { |
| RML BLACK DIAMOND | { |
| FM 3142 { | { |
| | { |

| | |
|-----------------------|---|
| {BHCS HEAT SEEKER 23 | { |
| LMJ HEAT SEEKER 5 | { |
| XF 11020 {LMJ ANGUS 5 | { |
| | { |

✓ A good solid, sound heifer to show or breed. Fifth heifer out of our good Heat Seeker cow.

1/2 BLOOD OPEN HEIFERS

67

Miss Trina

BD: 3-22-10
Reg.: Pending
BW: 59
1/2 Blood Open Heifer
Tattoo: 02X
Adj. WW:
Consignor: Double J Ranch



{NEVADA N060
BRAMBLETYE UTAH
FM 74 {BRAMBLETYE BRONWYN II M051

{JCG LETTERMAN
JCG MS MINT TRINA
P 340677 {JCG MS MINT TULIP

{BRAMBLETYE BOSUN L006
{GLEN INNES J389
{COMMODORE TRA J001
{GLEN INNES J308
{RDCA MR IMPULSE 022L
{BEF MS SCHWARZ 21G
{FBF TROY BOY 13K
{JCG MISS MINT POWER

68

Miss Katie

BD: 4-26-10
Reg.: Pending
BW: 56
1/2 Blood Open Heifer
Tattoo: 01X
Adj. WW:
Consignor: Double J Ranch



{NEVADA N060
BRAMBLETYE UTAH
FM 74 {BRAMBLETYE BRONWYN II M051

{OHL KABOY 18P
JCG MS APRIL
P 340685 {RDCA ANGUS 7912

{BRAMBLETYE BOSUN L006
{GI J389
{COMMORDE TRA J001
{GI J308
{GF KABOOM L75
{FJH COUNTESS 205E
{
{



69

HSR Look At Me Now

BD: 5-2-10
Reg.: XF 11393
BW:
1/2 Blood Open Heifer
Tattoo: HSR7X
Adj. WW:
Consignor: Heaven Sent Ranch



{MAINE-ANJOU BULL
DOUBLE J'S DR WHO 2U
XM 7415 {MISS JET'S ADMIRAL 03H

{BAR J NAUTILUS 7G3 0K16
HSR NORDEN 9T
XF 9186 {ANGUS COW

{
{
{BRAMBLETYE ADMIRAL II L035
{BRAMBLETYE TARA III
{BAR J NAUTILUS 7G3
{BAR J FROSTY 7G8
{
{

✓ *Eye catching, square hipped with lots of capacity best describes Look At Me Now. Be a trendsetter with this own daughter of Double J's Dr Who 2U, the 2009 Houston Stock Show grand champion percentage bull. As a 1/2 Lowline, 1/4 Maine-Anjou, 1/4 Angus heifer, she's got style, balance, muscle and femininity that follows our philosophy of "Championship genetics with commercial application and eye appeal."*

Notes ...

2011 National Lowline Consignors:

- Ausmerica Alliance Lowline Stud – Gilbert and Stebbins****Lots 43, 45, 46 , 47**
3986 Lindahl Rd, Hermantown, MN 55810; 218/729-9591
- Bar H Lowlines – Josh Hrabe**.....**Lots 64, 65**
501 Cemetery Rd, Plainville, KS 67663; 785/650-7571; chef40_05@hotmail.com
- B&D Lowlines – Bruce Nelson and Darin Raguse****Lots 10, 53, 54, 55**
2606 140th St, Barnesville, MN 56514; 218/329-3030; banelson@rrt.net
- Big Island Lowlines – Darrell Gotaas****Lots 7, 8, 33**
1625 184th St, Edmonton, Alberta T6M-2R1; 780/486-7553; gotaasfamily@rogers.com
- Cheyenne Outlaw, LLC – Chad Golladay****Lots 16, 36**
PO Box 3107, Cheyenne, WY 82003; 307/287-5015; chad@cattlegrower.com
- Dakota Lowlines – Rick Lloyd**.....**Lots 41, 59**
24561 348th Ave, Chamberlain, SD 57325; 605/730-6152; wingmastersd@yahoo.com
- Double D Ranch – Dennis Morrison**.....**Lots 9, 26, 27**
23342 685th Ave, Alden, MN 56009; 507/874-2600; namorrison@fmwildblue.com
- Double J Ranch – John Griffiths****Lots 67, 68**
PO Box 626, Logan, NM 88462; 575/487-1121; jgriffiths@plateautel.net
- Karl Effertz**.....**Lot 4**
17350 Hwy 1804 N, Bismarck, ND 58503; 701/223-5202; effertz@btinet.net
- Fairwyn Farms – Eric Craig**.....**Lot 32**
W197 Hwy 50, Burlington, WI 53105; 262/206-3802; ejcraig@genevaonline.com
- Fanning Cattle Co. – Heather Fanning****Lot 48**
27421 135th Ave N, Cordova, IL 61242; 309/716-6919; vaca36moo@yahoo.com
- Brian & Jennifer Hansen – 5H Farm**.....**Lot 35**
1800 Federal St N, Hampton, IA 50441; 641/512-1694; hansebj@mercyhealth.com
- Heaven Sent Ranch – Mike Hudlow Family****Lots 58, 60, 69**
18638 Harmon Rd, Fayetteville, AR 72704; 479/361-2859; mhudlow@simfoods.com
- High Hopes Farm – John and Sarah Bates****Lots 25, 66**
9096 Co Rd 14, Honeoye Falls, NY 14472; 585/624-7637
- K Bar W Ranches – Paula and Chris Kluding**.....**Lots 11, 12, 14**
335742 E Hwy 62, McCloud, OK 74851; 405/255-0893; pdkluding@aol.com
- Lakeville Lowline Breeders – Dennis Boldt****Lots 5, 19, 21, 22**
12295 205th St W, Lakeville, MN 55044; 612/270-0873; loald@hotmail.com
- Lazy G Lowlines – Glenn and Nancy Chapman****Lots 20, 24, 30, 37, 44**
16103 153rd Ave SE, Yelm, WA 98597; 360/894-5829; nwgardner@msn.com
- Lenhard Angus Ranch – Gordon Lenhard****Lots 38, 61, 62**
954 Twelve Mile Rd., Colville, WA 99114; 509/684-2928; gmclenhard@theofficenet.com
- Little Black Angus Ranch – Gerry Roach****Lots 15, 17**
2361 24th Ave NE, Mekinock, ND 58258; 218/779-3402; flpinc@qwestoffice.net
- Macdonell Lowlines – Max Macdonell****Lot 3**
9999 CR 115, Carbondale, CO 81623; 970/379-4301; maxlowlines@hotmail.com

